

## FZR1 Antibody (monoclonal) (M02)

Mouse monoclonal antibody raised against a full-length recombinant FZR1.

Catalog # AT2132a

### Specification

#### FZR1 Antibody (monoclonal) (M02) - Product Information

Application	WB, IHC, E
Primary Accession	<a href="#">Q9UM11</a>
Other Accession	<a href="#">BC013413</a>
Reactivity	Human
Host	mouse
Clonality	Monoclonal
Isotype	IgG2a Kappa
Calculated MW	55179

#### FZR1 Antibody (monoclonal) (M02) - Additional Information

Gene ID 51343

#### Other Names

Fizzy-related protein homolog, Fzr, CDC20-like protein 1, Cdh1/Hct1 homolog, hCDH1, FZR1, CDH1, FYR, FZR, KIAA1242

#### Target/Specificity

FZR1 (AAH13413.1, 1 a.a. ~ 493 a.a) full-length recombinant protein with GST tag. MW of the GST tag alone is 26 KDa.

#### Dilution

WB~~1:500~1000

#### Format

Clear, colorless solution in phosphate buffered saline, pH 7.2 .

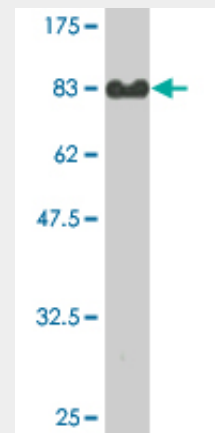
#### Storage

Store at -20°C or lower. Aliquot to avoid repeated freezing and thawing.

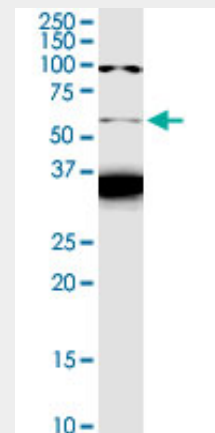
#### Precautions

FZR1 Antibody (monoclonal) (M02) is for research use only and not for use in diagnostic or therapeutic procedures.

#### FZR1 Antibody (monoclonal) (M02) - Protocols



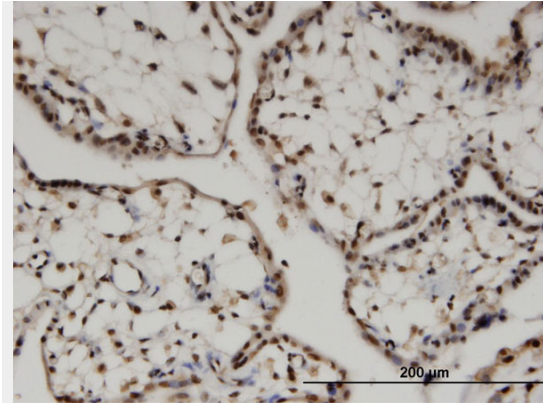
Antibody Reactive Against Recombinant Protein. Western Blot detection against Immunogen (80.08 KDa) .



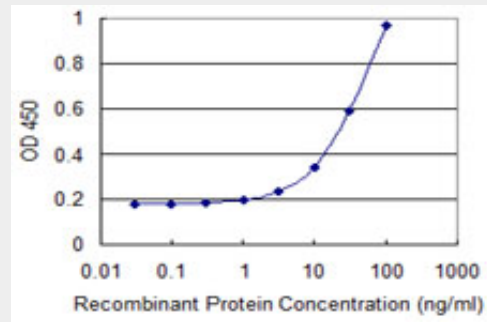
FZR1 monoclonal antibody (M02), clone 4C4. Western Blot analysis of FZR1 expression in Hela S3 NE.

Provided below are standard protocols that you may find useful for product applications.

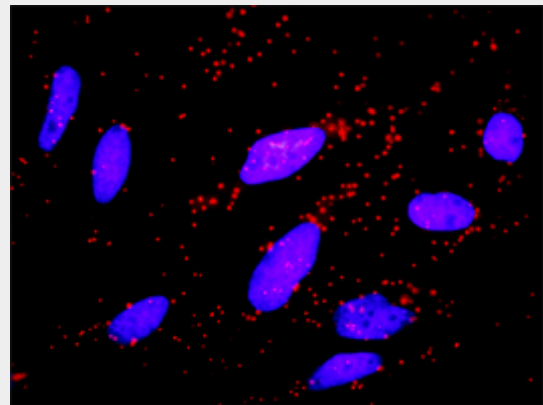
- [Western Blot](#)
- [Blocking Peptides](#)
- [Dot Blot](#)
- [Immunohistochemistry](#)
- [Immunofluorescence](#)
- [Immunoprecipitation](#)
- [Flow Cytometry](#)
- [Cell Culture](#)



Immunoperoxidase of monoclonal antibody to FZR1 on formalin-fixed paraffin-embedded human placenta. [antibody concentration 3 ug/ml]



Detection limit for recombinant GST tagged FZR1 is 1 ng/ml as a capture antibody.



Proximity Ligation Analysis of protein-protein interactions between CCNB1 and FZR1. HeLa cells were stained with anti-CCNB1 rabbit purified polyclonal 1:1200 and anti-FZR1 mouse monoclonal antibody 1:50. Each red dot represents the detection of protein-protein interaction complex, and nuclei were counterstained with DAPI (blue).

#### **FZR1 Antibody (monoclonal) (M02) - References**

The anaphase-promoting complex/cyclosome activator Cdh1 modulates Rho GTPase by targeting p190 RhoGAP for degradation. Naoe H, et al. Mol Cell Biol, 2010 Aug. PMID 20530197. Centrosome-related genes, genetic variation, and risk of breast cancer. Olson JE, et al. Breast Cancer Res Treat, 2010 May 28. PMID 20508983. Loss of the mammalian APC/C activator FZR1 shortens G1 and lengthens S phase but has little effect on exit from mitosis. Sigl R, et al. J Cell Sci, 2009 Nov 15. PMID 19861496. The Cdc14B-Cdh1-Plk1 axis controls the G2 DNA-damage-response checkpoint. Bassermann F, et al. Cell, 2008 Jul 25. PMID 18662541. Dissection of the APC/Cdh1-Skp2 cascade in breast cancer. Fujita T, et al. Clin Cancer Res, 2008 Apr 1. PMID 18381934.