

## ERH Antibody (monoclonal) (M14)

Mouse monoclonal antibody raised against a full length recombinant ERH.

Catalog # AT1942a

### Specification

#### ERH Antibody (monoclonal) (M14) - Product Information

Application	IF, WB, IHC, E
Primary Accession	<a href="#">P84090</a>
Other Accession	<a href="#">BC014301</a>
Reactivity	Human
Host	mouse
Clonality	Monoclonal
Isotype	IgG1 Kappa
Calculated MW	12259

#### ERH Antibody (monoclonal) (M14) - Additional Information

Gene ID 2079

#### Other Names

Enhancer of rudimentary homolog, ERH

#### Target/Specificity

ERH (AAH14301, 1 a.a. ~ 104 a.a)  
full-length recombinant protein with GST tag. MW of the GST tag alone is 26 KDa.

#### Dilution

WB~~1:500~1000

#### Format

Clear, colorless solution in phosphate buffered saline, pH 7.2 .

#### Storage

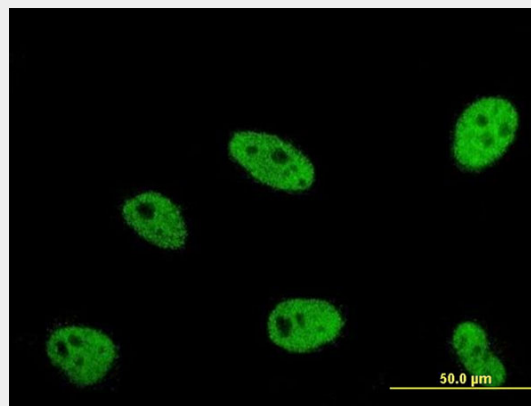
Store at -20°C or lower. Aliquot to avoid repeated freezing and thawing.

#### Precautions

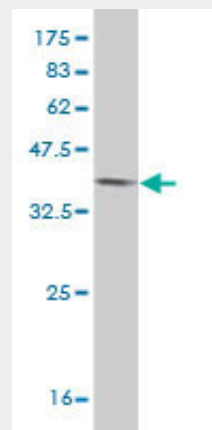
ERH Antibody (monoclonal) (M14) is for research use only and not for use in diagnostic or therapeutic procedures.

#### ERH Antibody (monoclonal) (M14) - Protocols

Provided below are standard protocols that you



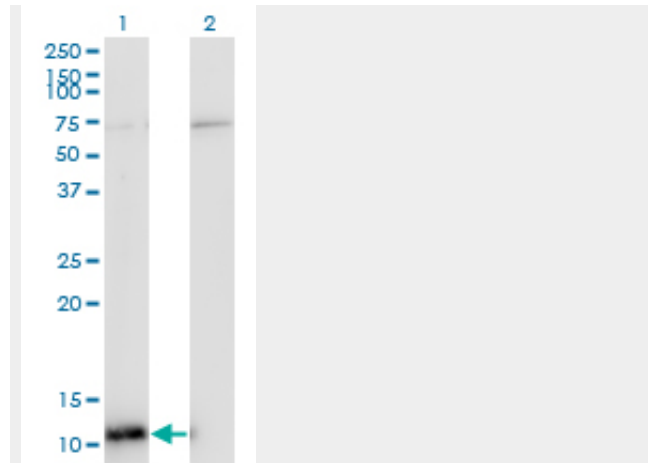
Immunofluorescence of monoclonal antibody to ERH on HeLa cell . [antibody concentration 10 ug/ml]



Antibody Reactive Against Recombinant Protein. Western Blot detection against Immunogen (37.18 KDa) .

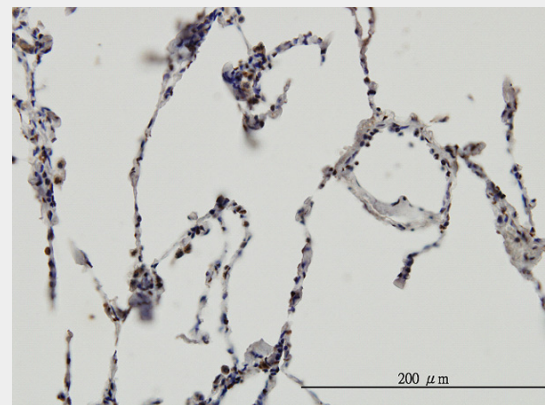
may find useful for product applications.

- [Western Blot](#)
- [Blocking Peptides](#)
- [Dot Blot](#)
- [Immunohistochemistry](#)
- [Immunofluorescence](#)
- [Immunoprecipitation](#)
- [Flow Cytometry](#)
- [Cell Culture](#)

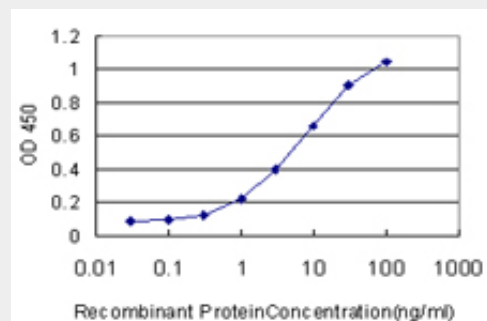


Western Blot analysis of ERH expression in transfected 293T cell line by ERH monoclonal antibody (M14), clone 4A10.

Lane 1: ERH transfected lysate(12.3 KDa).  
 Lane 2: Non-transfected lysate.



Immunoperoxidase of monoclonal antibody to ERH on formalin-fixed paraffin-embedded human lung. [antibody concentration 3 ug/ml]



Detection limit for recombinant GST tagged ERH is approximately 0.3ng/ml as a capture antibody.

**ERH Antibody (monoclonal) (M14) -  
References**

The metastasis efficiency modifier ribosomal RNA processing 1 homolog B (RRP1B) is a chromatin-associated factor. Crawford NP, et al. J Biol Chem, 2009 Oct 16. PMID 19710015. Enhancer of the rudimentary gene homologue (ERH) expression pattern in sporadic human breast cancer and normal breast tissue. Zafrakas M, et al. BMC Cancer, 2008 May 23. PMID 18500978. Ciz1, a p21 cip1/Waf1-interacting zinc finger protein and DNA replication factor, is a novel molecular partner for human enhancer of rudimentary homologue. Lukasik A, et al. FEBS J, 2008 Jan. PMID 18081865. Toward a confocal subcellular atlas of the human proteome. Barbe L, et al. Mol Cell Proteomics, 2008 Mar. PMID 18029348. A 1.55 Å resolution X-ray crystal structure of HEF2/ERH and insights into its transcriptional and cell-cycle interaction networks. Jin T, et al. Proteins, 2007 Aug 1. PMID 17444515.