

CDADC1 Antibody (monoclonal) (M01)

Mouse monoclonal antibody raised against a partial recombinant CDADC1.

Catalog # AT1453a

Specification

CDADC1 Antibody (monoclonal) (M01) - Product Information

Application	WB, IHC, E
Primary Accession	Q9BWW3
Other Accession	NM_030911
Reactivity	Human, Mouse
Host	mouse
Clonality	Monoclonal
Isotype	IgG1 Kappa
Calculated MW	58455

CDADC1 Antibody (monoclonal) (M01) - Additional Information

Gene ID 81602

Other Names

Cytidine and dCMP deaminase domain-containing protein 1, Testis development protein NYD-SP15, CDADC1

Target/Specificity

CDADC1 (NP_112173, 423 a.a. ~ 514 a.a) partial recombinant protein with GST tag. MW of the GST tag alone is 26 KDa.

Dilution

WB~~1:500~1000

Format

Clear, colorless solution in phosphate buffered saline, pH 7.2 .

Storage

Store at -20°C or lower. Aliquot to avoid repeated freezing and thawing.

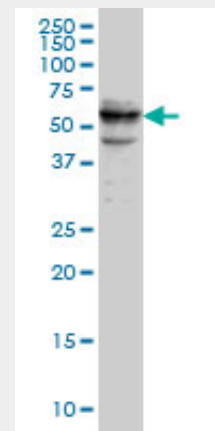
Precautions

CDADC1 Antibody (monoclonal) (M01) is for research use only and not for use in diagnostic or therapeutic procedures.

CDADC1 Antibody (monoclonal) (M01) - Protocols



Antibody Reactive Against Recombinant Protein. Western Blot detection against Immunogen (35.86 KDa) .



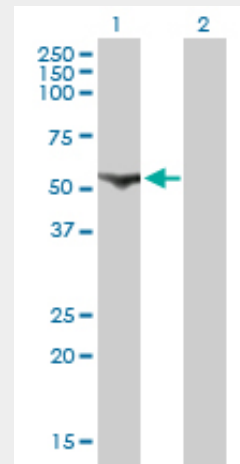
CDADC1 monoclonal antibody (M01), clone 1A2. Western Blot analysis of CDADC1 expression in Raw 264.7.

Provided below are standard protocols that you may find useful for product applications.

- [Western Blot](#)
- [Blocking Peptides](#)
- [Dot Blot](#)
- [Immunohistochemistry](#)
- [Immunofluorescence](#)
- [Immunoprecipitation](#)
- [Flow Cytometry](#)
- [Cell Culture](#)



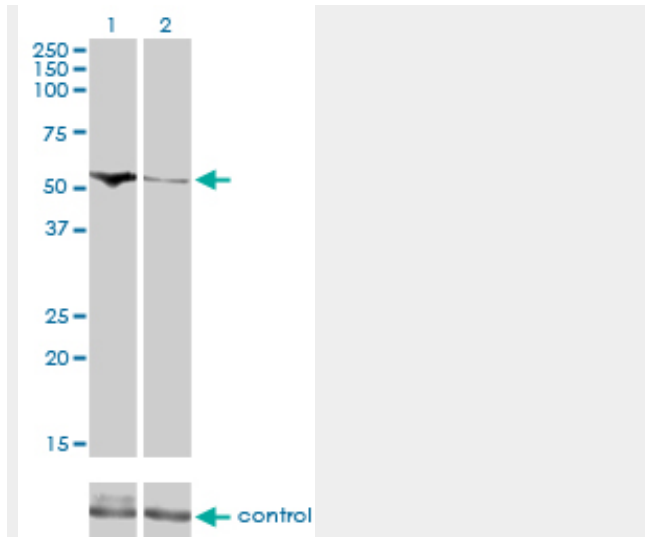
CDADC1 monoclonal antibody (M01), clone 1A2. Western Blot analysis of CDADC1 expression in NIH/3T3 ((Cat # AT1453a)



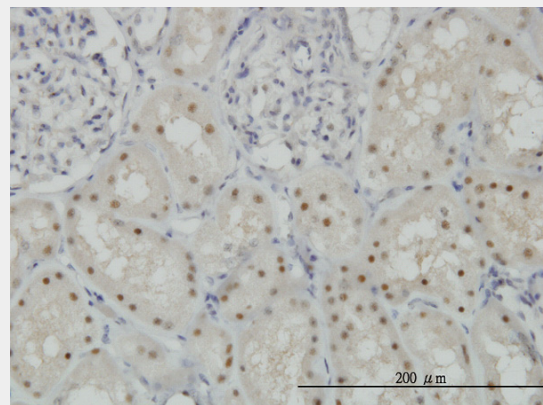
Western Blot analysis of CDADC1 expression in transfected 293T cell line by CDADC1 monoclonal antibody (M01), clone 1A2.

Lane 1: CDADC1 transfected lysate(58.5 KDa).

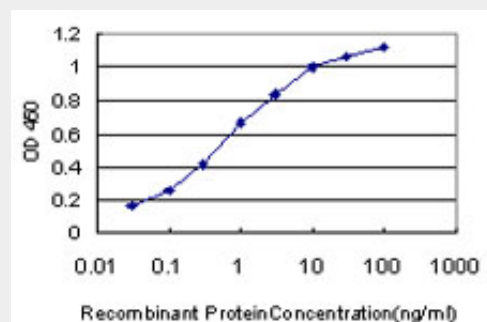
Lane 2: Non-transfected lysate.



Western blot analysis of CDADC1 over-expressed 293 cell line, cotransfected with CDADC1 Validated Chimera RNAi (Cat # AT1453a)



Immunoperoxidase of monoclonal antibody to CDADC1 on formalin-fixed paraffin-embedded human kidney. [antibody concentration 1 ug/ml]



Detection limit for recombinant GST tagged CDADC1 is approximately 0.03ng/ml as a capture antibody.

CDADC1 Antibody (monoclonal) (M01) -

References

NYD-SP15: a novel gene potentially involved in regulating testicular development and spermatogenesis. Liu Q, et al. *Biochem Genet*, 2006 Oct. PMID 16955368. Diversification of transcriptional modulation: large-scale identification and characterization of putative alternative promoters of human genes. Kimura K, et al. *Genome Res*, 2006 Jan. PMID 16344560. Generation and initial analysis of more than 15,000 full-length human and mouse cDNA sequences. Strausberg RL, et al. *Proc Natl Acad Sci U S A*, 2002 Dec 24. PMID 12477932. Insight into hepatocellular carcinogenesis at transcriptome level by comparing gene expression profiles of hepatocellular carcinoma with those of corresponding noncancerous liver. Xu XR, et al. *Proc Natl Acad Sci U S A*, 2001 Dec 18. PMID 11752456.