

C20orf31 Antibody (monoclonal) (M01)

Mouse monoclonal antibody raised against a partial recombinant C20orf31.

Catalog # AT1342a

Specification

C20orf31 Antibody (monoclonal) (M01) - Product Information

Application	IP, WB, IHC, E
Primary Accession	Q9BV94
Other Accession	NM_018217
Reactivity	Human
Host	mouse
Clonality	Monoclonal
Isotype	IgG1 Kappa
Calculated MW	64753

C20orf31 Antibody (monoclonal) (M01) - Additional Information

Gene ID 55741

Other Names

ER degradation-enhancing
alpha-mannosidase-like protein 2, EDEM2,
C20orf31, C20orf49

Target/Specificity

C20orf31 (NP_060687, 479 a.a. ~ 578 a.a)
partial recombinant protein with GST tag.
MW of the GST tag alone is 26 KDa.

Dilution

WB~~1:500~1000

Format

Clear, colorless solution in phosphate
buffered saline, pH 7.2 .

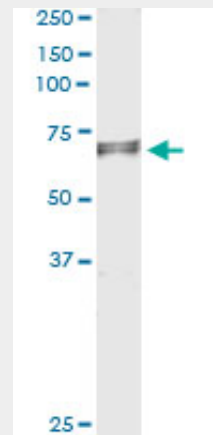
Storage

Store at -20°C or lower. Aliquot to avoid
repeated freezing and thawing.

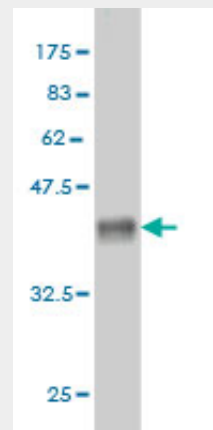
Precautions

C20orf31 Antibody (monoclonal) (M01) is
for research use only and not for use in
diagnostic or therapeutic procedures.

C20orf31 Antibody (monoclonal) (M01) - Protocols



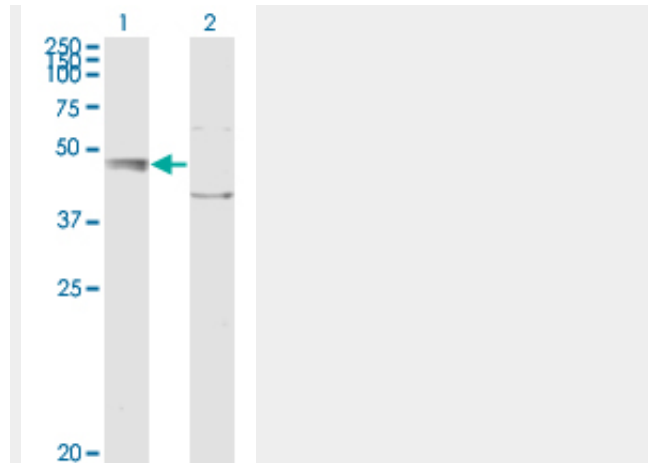
Immunoprecipitation of EDEM2 transfected lysate using anti-EDEM2 monoclonal antibody and Protein A Magnetic Bead ([U0007](#)), and immunoblotted with EDEM2 MaxPab rabbit polyclonal antibody.



Antibody Reactive Against Recombinant Protein. Western Blot detection against Immunogen (36.74 KDa) .

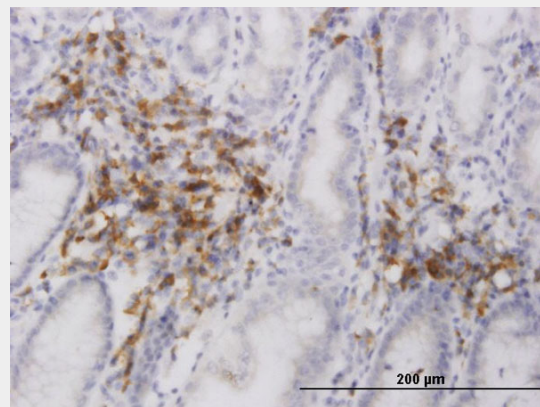
Provided below are standard protocols that you may find useful for product applications.

- [Western Blot](#)
- [Blocking Peptides](#)
- [Dot Blot](#)
- [Immunohistochemistry](#)
- [Immunofluorescence](#)
- [Immunoprecipitation](#)
- [Flow Cytometry](#)
- [Cell Culture](#)

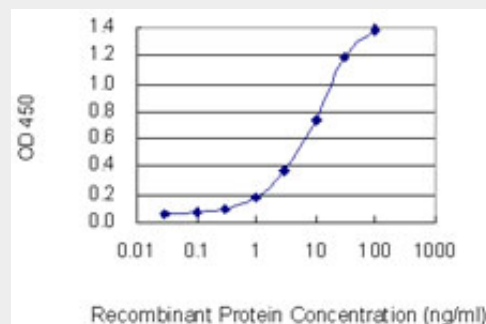


Western Blot analysis of EDEM2 expression in transfected 293T cell line by C20orf31 monoclonal antibody (M01), clone 2E4.

Lane 1: EDEM2 transfected lysate (64.8 KDa).
Lane 2: Non-transfected lysate.



Immunoperoxidase of monoclonal antibody to C20orf31 on formalin-fixed paraffin-embedded human stomach. [antibody concentration 1.5 ug/ml]



Detection limit for recombinant GST tagged EDEM2 is 0.1 ng/ml as a capture antibody.

C20orf31 Antibody (monoclonal) (M01) -

Background

In the endoplasmic reticulum (ER), misfolded proteins are retrotranslocated to the cytosol and degraded by the proteasome in a process known as ER-associated degradation (ERAD). EDEM2 belongs to a family of proteins involved in ERAD of glycoproteins (Mast et al., 2005 [PubMed 15537790]).

C20orf31 Antibody (monoclonal) (M01) - References

Genome-wide association study identifies novel loci for plasma levels of protein C: the ARIC study. Tang W, et al. Blood, 2010 Aug 27. PMID 20802025. A human protein-protein interaction network: a resource for annotating the proteome. Stelzl U, et al. Cell, 2005 Sep 23. PMID 16169070. A novel stress-induced EDEM variant regulating endoplasmic reticulum-associated glycoprotein degradation. Olivari S, et al. J Biol Chem, 2005 Jan 28. PMID 15579471. Human EDEM2, a novel homolog of family 47 glycosidases, is involved in ER-associated degradation of glycoproteins. Mast SW, et al. Glycobiology, 2005 Apr. PMID 15537790. The status, quality, and expansion of the NIH full-length cDNA project: the Mammalian Gene Collection (MGC). Gerhard DS, et al. Genome Res, 2004 Oct. PMID 15489334.