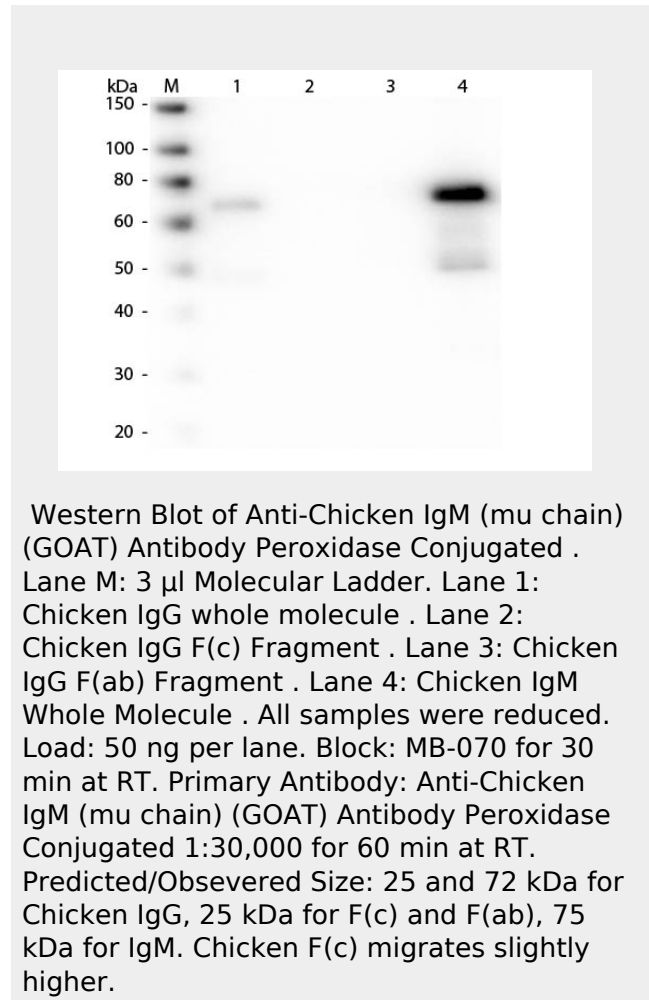


**Anti-Chicken IgM (mu chain) (Peroxidase Conjugated) Secondary Antibody**  
 Goat Polyclonal, Peroxidase (Horseradish)  
 Catalog # ASR2942

**Specification**

**Anti-Chicken IgM (mu chain) (Peroxidase Conjugated) Secondary Antibody - Product Information**

Description	<b>Anti-CHICKEN IgM (mu chain) (GOAT) Antibody Peroxidase Conjugated</b>
Host Conjugate	<b>Goat Peroxidase (Horseradish)</b>
Target Species	<b>Chicken</b>
Clonality	<b>Polyclonal</b>
Application	<b>,1,10,15,</b>
Application Note	<b>ELISA 1:10,000-1:50,000;Western Blot 1:1,000-1:10,000;Immunochemistry 1:500-1:2,500</b>
Physical State	<b>Lyophilized IgG</b>
Host Isotype	<b>IgM <math>\mu</math> chain</b>
Target Isotype	<b>0.02 M Potassium Phosphate, 0.15 M Sodium Chloride, pH 7.2</b>
Buffer	<b>Chicken IgM mu heavy chain</b>
Immunogen	<b>1.0 mL</b>
Reconstitution Volume	<b>Restore with deionized water (or equivalent)</b>
Reconstitution Buffer	<b>10 mg/mL Bovine Serum Albumin (BSA) - Immunoglobulin and Protease free</b>
Stabilizer	<b>0.01% (w/v) Gentamicin Sulfate. Do NOT add Sodium Azide!</b>
Preservative	



**Anti-Chicken IgM (mu chain) (Peroxidase Conjugated) Secondary Antibody - Additional Information****Shipping Condition**  
Ambient**Purity**

This product was prepared from monospecific antiserum by immunoaffinity chromatography using Chicken IgM coupled to agarose beads followed by solid phase adsorption(s) to remove any unwanted reactivities. Assay by immunoelectrophoresis resulted in a single precipitin arc against anti-Peroxidase, anti-Goat Serum, Chicken IgM and Chicken Serum.

**Storage Condition**

Store vial at 4° C prior to restoration. For extended storage aliquot contents and freeze at -20° C or below. Avoid cycles of freezing and thawing. Centrifuge product if not completely clear after standing at room temperature. This product is stable for several weeks at 4° C as an undiluted liquid. Dilute only prior to immediate use.

**Precautions Note**

This product is for research use only and is not intended for therapeutic or diagnostic applications.

**Anti-Chicken IgM (mu chain) (Peroxidase Conjugated) Secondary Antibody - Protein Information****Anti-Chicken IgM (mu chain) (Peroxidase Conjugated) Secondary Antibody - Protocols**

Provided below are standard protocols that you may find useful for product applications.

- [Western Blot](#)
- [Blocking Peptides](#)
- [Dot Blot](#)
- [Immunohistochemistry](#)
- [Immunofluorescence](#)
- [Immunoprecipitation](#)
- [Flow Cytometry](#)
- [Cell Culture](#)