

Mouse IgG F(ab')₂ Fluorescein

Catalog # ASR2136

Specification

Mouse IgG F(ab')₂ Fluorescein - Product Information

Description	MOUSE IgG F(ab')₂ fragment Fluorescein conjugated
Conjugate	Fluorescein (FITC)
FP Value	2.5 moles Fluorescein (FITC) per mole of Mouse IgG F(ab')₂
Physical State	Lyophilized
Host Isotype Buffer	0.01 M Sodium Phosphate, 0.15 M Sodium Chloride, pH 7.2
Species of Origin	Mouse
Reconstitution Volume	1.0 mL
Reconstitution Buffer	Restore with deionized water (or equivalent)
Stabilizer	10 mg/mL Bovine Serum Albumin (BSA) - Immunoglobulin and Protease free
Preservative	0.01% (w/v) Thimerosal

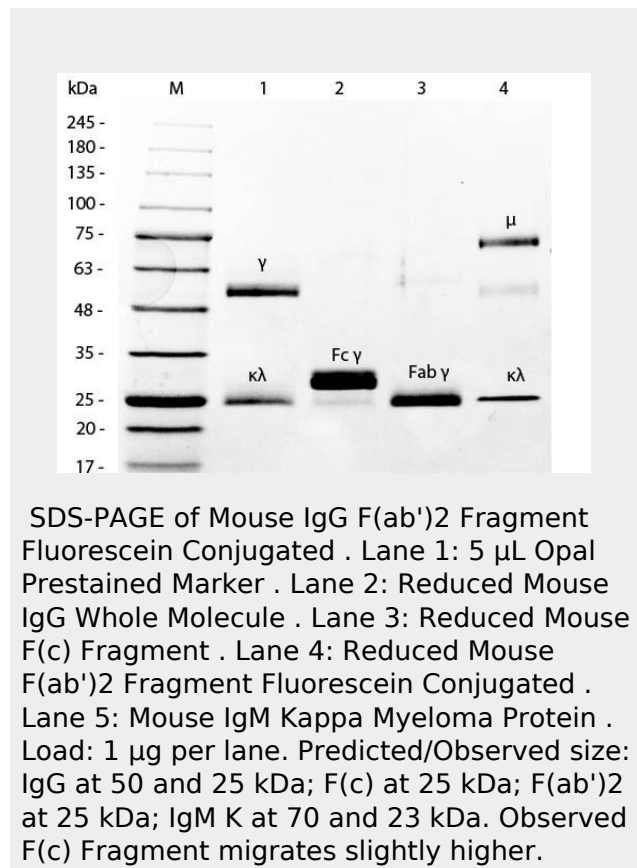
Mouse IgG F(ab')₂ Fluorescein - Additional Information

Shipping Condition

Ambient

Purity

This product was prepared from normal serum by delipidation, salt fractionation and ion change chromatography followed by pepsin digestion and extensive dialysis against the buffer stated above. Assay by



Mouse IgG F(ab')₂ Fluorescein - Background

This product is designed for immunofluorescence microscopy, fluorescence based plate assays (FLISA) and fluorescent western blotting. This product is also suitable for multiplex analysis, including multicolor imaging, utilizing various commercial platforms.

immuno-electrophoresis resulted in a single precipitin arc against anti-Fluorescein, anti-Mouse IgG, anti-Mouse IgG F(ab')₂ and anti-Mouse Serum. No reaction was observed against anti-Mouse IgG F(c) or anti-Pepsin.

Storage Condition

Store vial at 4° C prior to restoration. For extended storage aliquot contents and freeze at -20° C or below. Avoid cycles of freezing and thawing. Centrifuge product if not completely clear after standing at room temperature. This product is stable for several weeks at 4° C as an undiluted liquid. Dilute only prior to immediate use.

Precautions Note

This product is for research use only and is not intended for therapeutic or diagnostic applications.

Mouse IgG F(ab')₂ Fluorescein - Protein Information**Mouse IgG F(ab')₂ Fluorescein - Protocols**

Provided below are standard protocols that you may find useful for product applications.

- [Western Blot](#)
- [Blocking Peptides](#)
- [Dot Blot](#)
- [Immunohistochemistry](#)
- [Immunofluorescence](#)
- [Immunoprecipitation](#)
- [Flow Cytometry](#)
- [Cell Culture](#)