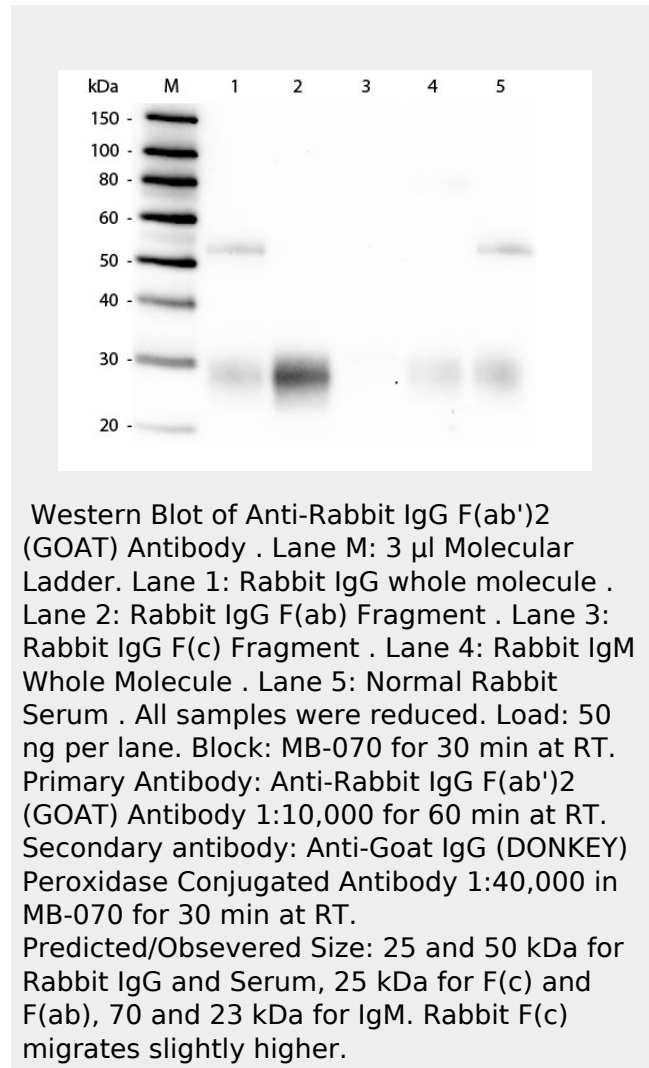


**Anti-Rabbit IgG F(ab')<sub>2</sub> (Rhodamine Conjugated) Secondary Antibody**  
Goat Polyclonal, Rhodamine (TRITC)  
Catalog # ASR1813

**Specification**

**Anti-Rabbit IgG F(ab')<sub>2</sub> (Rhodamine Conjugated) Secondary Antibody - Product Information**

Description	<b>Anti-RABBIT IgG F(ab')<sub>2</sub> (GOAT) Antibody Rhodamine Conjugated</b>
Host Conjugate	<b>Goat Rhodamine (TRITC)</b>
FP Value	<b>2.5 moles Rhodamine (TRITC) per mole of IgG</b>
Target Species	<b>Rabbit</b>
Clonality	<b>Polyclonal</b>
Application	<b>,3,4,</b>
Application Note	<b>FLISA 1:10,000-1:50,000;IF Microscopy 1:1,000-1:5,000;FlowCytometry 1:500-1:2,500</b>
Physical State	<b>Lyophilized</b>
Host Isotype	<b>IgG</b>
Target Isotype	<b>IgG F(ab')<sub>2</sub></b>
Buffer	<b>0.02 M Potassium Phosphate, 0.15 M Sodium Chloride, pH 7.2</b>
Immunogen	<b>Rabbit IgG F(ab')<sub>2</sub> fragment</b>
Reconstitution Volume	<b>1.0 mL</b>
Reconstitution Buffer	<b>Restore with deionized water (or equivalent)</b>
Stabilizer	<b>10 mg/mL Bovine Serum Albumin (BSA) - Immunoglobulin and Protease free</b>
Preservative	<b>0.01% (w/v) Sodium Azide</b>



**Anti-Rabbit IgG F(ab')<sub>2</sub> (Rhodamine Conjugated) Secondary Antibody - Background**

This product is designed for immunofluorescence microscopy, fluorescence based plate assays (FLISA) and fluorescent western blotting. This product is also suitable for multiplex analysis, including multicolor imaging, utilizing various commercial platforms.

**Anti-Rabbit IgG F(ab')<sub>2</sub> (Rhodamine Conjugated)  
Secondary Antibody - Additional Information****Shipping Condition**

Ambient

**Purity**

This product was prepared from monospecific antiserum by immunoaffinity chromatography using Rabbit IgG coupled to agarose beads followed by solid phase adsorption(s) to remove any unwanted reactivities. Assay by immunoelectrophoresis resulted in a single precipitin arc against anti-Goat Serum, Rabbit IgG, Rabbit IgG F(ab')<sub>2</sub> and Rabbit Serum. No reaction was observed against Rabbit IgG F(c).

**Storage Condition**

Store vial at 4° C prior to restoration. For extended storage aliquot contents and freeze at -20° C or below. Avoid cycles of freezing and thawing. Centrifuge product if not completely clear after standing at room temperature. This product is stable for several weeks at 4° C as an undiluted liquid. Dilute only prior to immediate use.

**Precautions Note**

This product is for research use only and is not intended for therapeutic or diagnostic applications.

**Anti-Rabbit IgG F(ab')<sub>2</sub> (Rhodamine Conjugated)  
Secondary Antibody - Protein Information****Anti-Rabbit IgG F(ab')<sub>2</sub> (Rhodamine Conjugated) Secondary Antibody -  
Protocols**

Provided below are standard protocols that you may find useful for product applications.

- [Western Blot](#)
- [Blocking Peptides](#)
- [Dot Blot](#)
- [Immunohistochemistry](#)
- [Immunofluorescence](#)
- [Immunoprecipitation](#)
- [Flow Cytometry](#)
- [Cell Culture](#)