

Metallothionein Antibody
Catalog # ASM10567

Specification

Metallothionein Antibody - Product Information

Application **WB**
Primary Accession [O911X5](#)
Host **Rabbit**
Reactivity **P. aeruginosa**
Clonality **Polyclonal**

Description

Rabbit Anti-Pseudomonas aeruginosa
Metallothionein Polyclonal

Target/Specificity

Detects ~36 kDa.

Other Names

CES 1 antibody, CES1 antibody,
Metallothionein 1A antibody,
Metallothionein 1S antibody,
Metallothionein 2 antibody, Metallothionein
2A antibody, Metallothionein IA antibody,
Metallothionein II antibody,
Metallothionein-1A antibody,
Metallothionein-IA antibody,
Metallothionein2 antibody, MGC32848
antibody, MT 1A antibody, MT 2 antibody,
MT 2A antibody, MT IA antibody, MT II
antibody, MT-1A antibody, MT-IA antibody,
MT1 antibody, MT1A antibody,
MT1A_HUMAN antibody, MT1S antibody,
MT2 antibody, MT2A antibody, MTC
antibody, Probable Metallothionein Antibody

Immunogen

Synthetic peptide from the mid-protein of
Pseudomonas aeruginosa Metallothionein

Purification

Peptide Affinity Purified

Storage **-20°C**

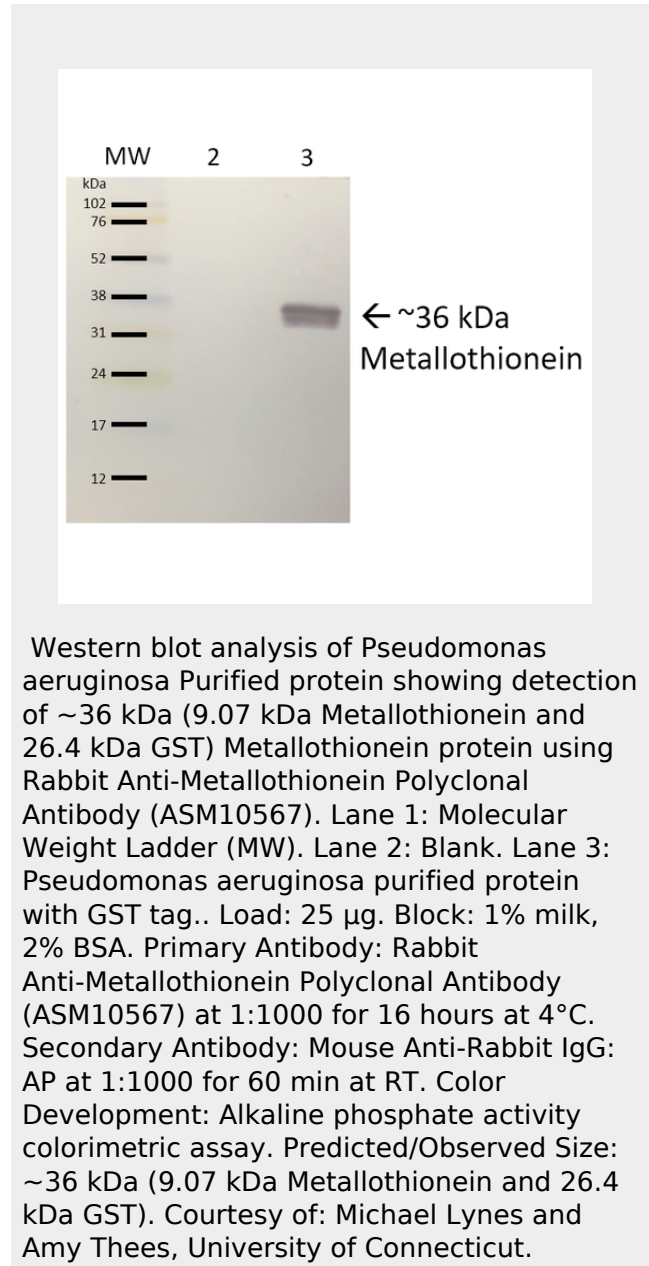
Storage Buffer

PBS, 50% glycerol, 0.09% sodium azide

Shipping **Blue Ice or 4°C**
Temperature

Certificate of Analysis

A 1:1000 dilution of SPC-717 was sufficient
for detection of Metallothionein in 15 µg of
pseudomonas aeruginosa purified



Metallothionein (pmtA-GST) protein by ECL immunoblot analysis using goat anti-rabbit IgG:HRP as the secondary antibody.

Metallothionein Antibody - Protocols

Provided below are standard protocols that you may find useful for product applications.

- [Western Blot](#)
- [Blocking Peptides](#)
- [Dot Blot](#)
- [Immunohistochemistry](#)
- [Immunofluorescence](#)
- [Immunoprecipitation](#)
- [Flow Cytometry](#)
- [Cell Culture](#)