

CCR2 Antibody
Catalog # **ASM10559**

Specification

CCR2 Antibody - Product Information

| | |
|-------------------|--------------------------------|
| Application | WB |
| Primary Accession | P41597 |
| Other Accession | NP_001116513.2 |
| Host | Rabbit |
| Reactivity | Rat |
| Clonality | Polyclonal |

Description

Rabbit Anti-Human CCR2 Polyclonal

Target/Specificity

Detects ~42 kDa.

Other Names

CCR2 Antibody, C-C chemokine receptor type 2 Antibody, Monocyte Chemotactic Protein 1 Receptor Antibody, CC chemokine receptor type 2 Antibody, CCR1L Antibody, CCKR2 Antibody, CD192 Antibody, MCP-1-R Antibody, MCP1 RECEPTOR Antibody, CKR2B Antibody, C-C CKR-2 Antibody, CC CKR 2 Antibody, CD_antigen: CD192 Antibody, CC-CKR-2 Antibody, CCR5L Antibody, C C chemokine receptor type 2 Antibody, CD192 antigen Antibody, CKR2A Antibody, CCR2 Antibody, Monocyte chemoattractant protein 1 receptor Antibody, CCR 2 Antibody, CCR2B Antibody, C C CKR 2 Antibody, CCR-2 Antibody, CMKBR2 Antibody, MCP 1 R Antibody, CCR2A Antibody, Chemokine CC Motif Receptor 2 Antibody, Chemokine C C motif receptor 2 Antibody, CCR2_HUMAN Antibody, MCP1R Antibody, CKR 2 Antibody

Immunogen

Synthetic peptide of Human CCR2

Purification

Peptide Affinity Purified

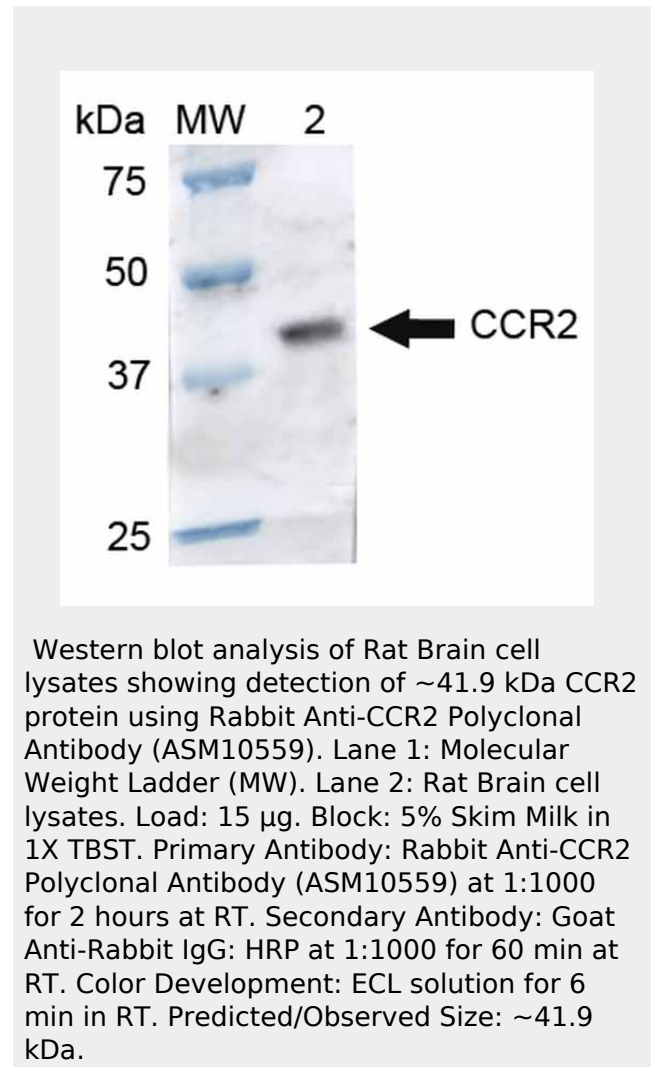
Storage **-20°C**

Storage Buffer

PBS, 50% glycerol, 0.09% sodium azide

Shipping **Blue Ice or 4°C**
Temperature

Certificate of Analysis



A 1:1000 dilution of SPC-704 was sufficient for detection of CCR2 in 15 µg of rat brain cell lysates by ECL immunoblot analysis using goat anti-rabbit IgG:HRP as the secondary antibody.

Cellular Localization

Cell Membrane | Multi-Pass Membrane Protein

CCR2 Antibody - Protocols

Provided below are standard protocols that you may find useful for product applications.

- [Western Blot](#)
- [Blocking Peptides](#)
- [Dot Blot](#)
- [Immunohistochemistry](#)
- [Immunofluorescence](#)
- [Immunoprecipitation](#)
- [Flow Cytometry](#)
- [Cell Culture](#)