

alpha Tubulin Antibody
Catalog # ASM10551

Specification

alpha Tubulin Antibody - Product Information

Application **ICC/IF, WB**
Primary Accession [P68363](#)
Other Accession [NP_006073.2](#)
Host **Rabbit**
Reactivity **Human**
Clonality **Polyclonal**

Description

Rabbit Anti-Human alpha Tubulin Antibody
Polyclonal

Target/Specificity

Detects ~50 kDa.

Other Names

Alpha-tubulin ubiquitous Antibody, Alpha tubulin ubiquitous Antibody, Tubulin alpha 1B chain Antibody, Tubulin alpha ubiquitous Antibody, Tubulin K-alpha-1 Antibody, TBA1B_HUMAN Antibody, K alpha 1 Antibody, Tubulin alpha ubiquitous chain Antibody, Tubulin alpha 1B Antibody, TUBA1B Antibody, Tubulin alpha-1B chain Antibody, Tubulin alpha-ubiquitous chain Antibody, Tubulin K alpha 1 Antibody

Immunogen

Synthetic peptide of Human alpha-Tubulin

Purification

Peptide Affinity Purified

Storage **-20°C**

Storage Buffer

PBS, 50% glycerol, 0.09% sodium azide

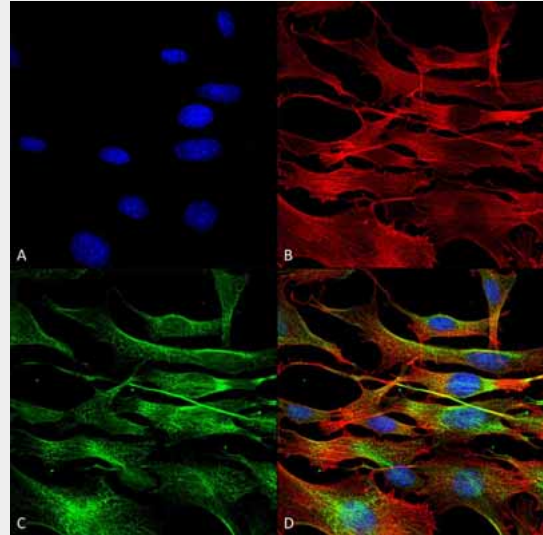
Shipping **Blue Ice or 4°C**
Temperature

Certificate of Analysis

A 1:1000 dilution of SPC-692 was sufficient for detection of alpha-Tubulin in 15 µg of Human HeLa Cell Lysates by ECL immunoblot analysis using goat anti-rabbit IgG:HRP as the secondary antibody.

Cellular Localization

Cytoplasm | Cytoskeleton

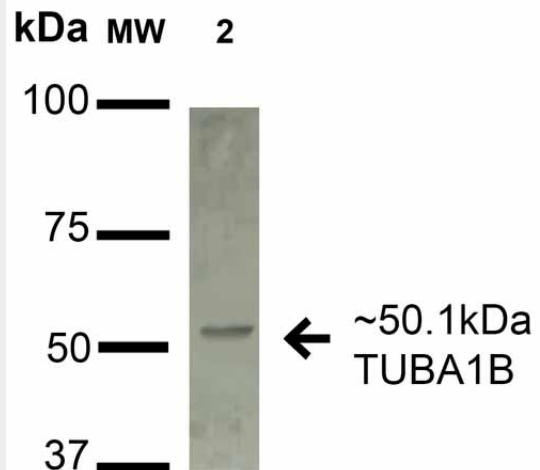


Immunocytochemistry/Immunofluorescence analysis using Rabbit Anti-alpha Tubulin Polyclonal Antibody (ASM10551). Tissue: NIH 3T3 (Mouse Fibroblast cell line). Species: Mouse. Fixation: 4% Formaldehyde for 15 min at RT. Primary Antibody: Rabbit Anti-alpha Tubulin Polyclonal Antibody (ASM10551) at 1:100 for 60 min at RT. Secondary Antibody: Goat Anti-Rabbit ATTO 488 at 1:200 for 60 min at RT. Counterstain: Phalloidin Texas Red F-Actin stain; DAPI (blue) nuclear stain at 1:1000, 1:5000 for 60 min at RT, 5 min at RT. Localization: Cytoplasm, Cytoskeleton. Magnification: 60X. (A) DAPI (blue) nuclear stain (B) Phalloidin Texas Red F-Actin stain (C) alpha Tubulin Antibody (D) Composite.

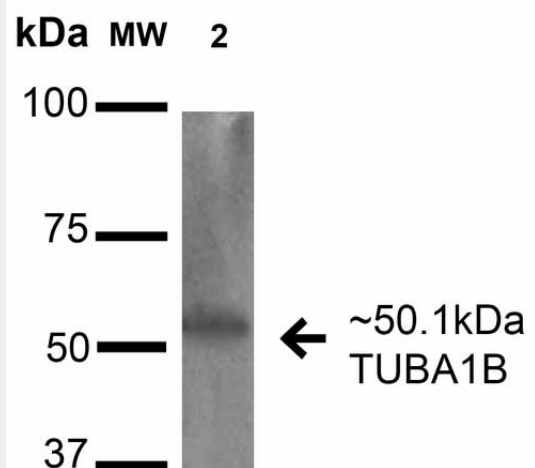
alpha Tubulin Antibody - Protocols

Provided below are standard protocols that you may find useful for product applications.

- [Western Blot](#)
- [Blocking Peptides](#)
- [Dot Blot](#)
- [Immunohistochemistry](#)
- [Immunofluorescence](#)
- [Immunoprecipitation](#)
- [Flow Cytometry](#)
- [Cell Culture](#)



Western blot analysis of Human A549 cell lysates showing detection of 50.1 kDa alpha Tubulin Antibody protein using Rabbit Anti-alpha Tubulin Antibody Polyclonal Antibody (ASM10551). Lane 1: Molecular Weight Ladder (MW). Lane 2: Human A549 cell lysates. Load: 15 µg. Block: 2% BSA and 2% Skim Milk in 1X TBST. Primary Antibody: Rabbit Anti-alpha Tubulin Antibody Polyclonal Antibody (ASM10551) at 1:1000 for 16 hours at 4°C. Secondary Antibody: Goat Anti-Rabbit IgG: HRP at 1:2000 for 60 min at RT. Color Development: ECL solution for 6 min in RT. Predicted/Observed Size: 50.1 kDa.



Western blot analysis of Human HeLa cell lysates showing detection of 50.1 kDa alpha Tubulin Antibody protein using Rabbit Anti-alpha Tubulin Antibody Polyclonal Antibody (ASM10551). Lane 1: Molecular Weight Ladder (MW). Lane 2: Human HeLa cell lysates. Load: 15 µg. Block: 5% Skim Milk in 1X TBST. Primary Antibody: Rabbit Anti-alpha Tubulin Antibody Polyclonal Antibody (ASM10551) at 1:1000 for 16 hours at 4°C. Secondary Antibody: Goat Anti-Rabbit IgG: HRP at 1:2000 for 60 min at RT. Color Development: ECL solution for 6 min in RT. Predicted/Observed Size: 50.1 kDa.

Milk in 1X TBST. Primary Antibody: Rabbit Anti-alpha Tubulin Antibody Polyclonal Antibody (ASM10551) at 1:1000 for 16 hours at 4°C. Secondary Antibody: Goat-Anti-Rabbit IgG: HRP at 1:2000 for 60 min at RT. Color Development: TMB. Predicted/Observed Size: 50.1 kDa.