

BNIP3 Antibody
Catalog # ASM10545**Specification****BNIP3 Antibody - Product Information**

Application	ICC/IF, WB
Primary Accession	Q12983
Other Accession	NP_004043.3
Host	Rabbit
Reactivity	Human
Clonality	Polyclonal
Format	RPE

Description

Rabbit Anti-Human BNIP3 Polyclonal

Target/Specificity

Predicted molecular weight at ~21.5kDa.
Observed bands at ~20-30kDa and
50-60kDa due to the homodimer complex of
BNIP3.

Other Names

NIP3 Antibody, BCL2 Adenovirus E1B 19kDa
Interacting Protein 3 Antibody,
BNIP3_Human Antibody

Immunogen

Synthetic peptide from the C-terminal of
human BNIP3

Purification

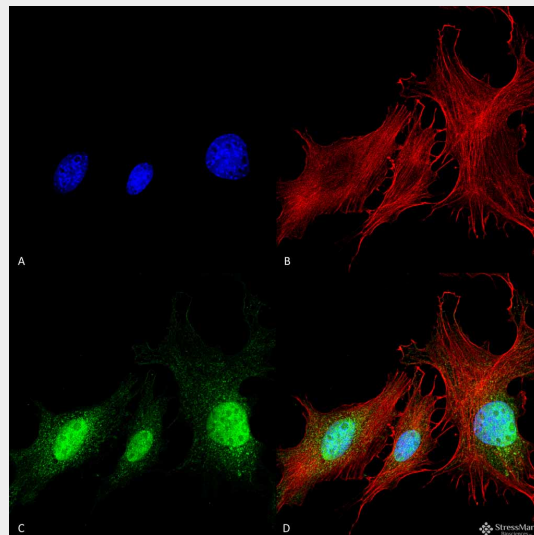
Peptide Affinity Purified

Storage **-20°C****Storage Buffer**

PBS, 50% glycerol, 0.09% sodium azide

Shipping **Blue Ice or 4°C**
Temperature**Certificate of Analysis**

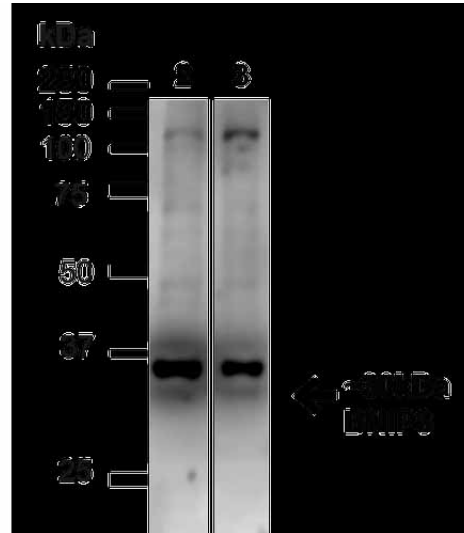
A 1:1000 dilution of SPC-685 was sufficient
for detection of BNIP3 on mouse kidney
lysates using Goat anti-rabbit IgG:HRP as
the secondary antibody.

Cellular LocalizationMitochondrion | Mitochondrion outer
membrane**BNIP3 Antibody - Protocols**

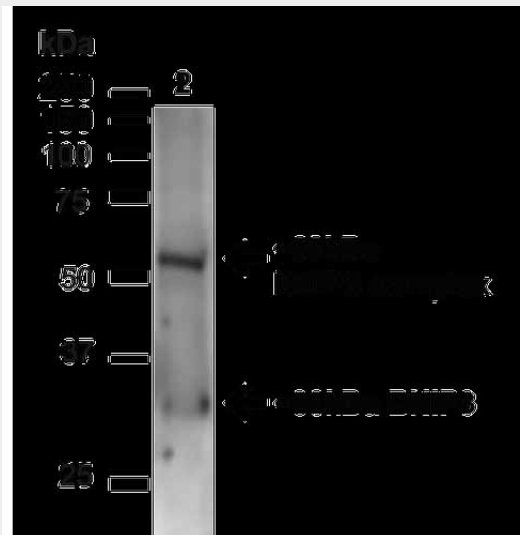
Immunocytochemistry/Immunofluorescence analysis using Rabbit Anti-BNIP3 Polyclonal Antibody (ASM10545). Tissue: Fibroblast cell line (NIH 3T3). Species: Human. Fixation: 4% Formaldehyde for 15 min at RT. Primary Antibody: Rabbit Anti-BNIP3 Polyclonal Antibody (ASM10545) at 1:100 for 60 min at RT. Secondary Antibody: Goat Anti-Rabbit ATTO 488 at 1:100 for 60 min at RT. Counterstain: Phalloidin Texas Red F-Actin stain; DAPI (blue) nuclear stain at 1:1000, 1:5000 for 60min RT, 5min RT. Localization: Cytoplasm . Magnification: 60X. (A) DAPI (blue) nuclear stain (B) Phalloidin Texas Red F-Actin stain (C) BNIP3 Antibody (D) Composite.

Provided below are standard protocols that you may find useful for product applications.

- [Western Blot](#)
- [Blocking Peptides](#)
- [Dot Blot](#)
- [Immunohistochemistry](#)
- [Immunofluorescence](#)
- [Immunoprecipitation](#)
- [Flow Cytometry](#)
- [Cell Culture](#)



Western blot analysis of Human HeLa and 293T cell lysates showing detection of ~30kDa BNIP3 protein using Rabbit Anti-BNIP3 Polyclonal Antibody (ASM10545). Lane 1: MW Ladder. Lane 2: Human HeLa (20 µg). Lane 3: Human 293T (20 µg). Load: 20 µg. Block: 5% milk + TBST for 1 hour at RT. Primary Antibody: Rabbit Anti-BNIP3 Polyclonal Antibody (ASM10545) at 1:1000 for 1 hour at RT. Secondary Antibody: Goat Anti-Rabbit: HRP at 1:2000 for 1 hour at RT. Color Development: TMB solution for 12 min at RT. Predicted/Observed Size: ~30kDa .



Western blot analysis of Mouse Kidney showing detection of ~30kDa BNIP3 protein using Rabbit Anti-BNIP3 Polyclonal Antibody (ASM10545). Lane 1: MW Ladder. Lane 2: Mouse Kidney (20 µg). Load: 20 µg. Block: 5% milk + TBST for 1 hour at RT. Primary Antibody: Rabbit Anti-BNIP3 Polyclonal Antibody (ASM10545) at 1:1000 for 1 hour at

RT. Secondary Antibody: Goat Anti-Rabbit:
HRP at 1:2000 for 1 hour at RT. Color
Development: TMB solution for 12 min at RT.
Predicted/Observed Size: ~30kDa . Other
Band(s): ~60kDa (BNIP3 complex).

BNIP3 Antibody - Background

BNIP3 is an apoptosis-inducing protein which can overcome BCL2 suppression. It may play a role in repartitioning calcium between the two major intracellular calcium stores in association with BCL2. It has been shown to interact with CD47, BCL2-like, and BCL-2 (1-3).

BNIP3 Antibody - References

1. Boyd J.M., et al. (1994) Cell. 79(2): 341-351.
2. Lamy L., et al. (2003) J Biol Chem. 278(26): 23915-23921.
3. Ray R., et al. (2000) J Biol Chem. 275(2): 1439-1448.