

RAB1B Antibody
Catalog # ASM10544

Specification

RAB1B Antibody - Product Information

Application **WB**
Primary Accession [O9H0U4](#)
Other Accession [NP_112243.1](#)
Host **Rabbit**
Reactivity **Human, Rat**
Clonality **Polyclonal**

Description

Rabbit Anti-Human RAB1B Polyclonal

Target/Specificity

Detects ~48 kDa.

Other Names

Ras-related protein Rab-1B Antibody,
RAB1B Antibody

Immunogen

Synthetic peptide from the C-terminal of
Human RAB1B (aa. 179-189)

Purification

Peptide Affinity Purified

Storage **-20°C**

Storage Buffer

PBS, 50% glycerol, 0.09% sodium azide

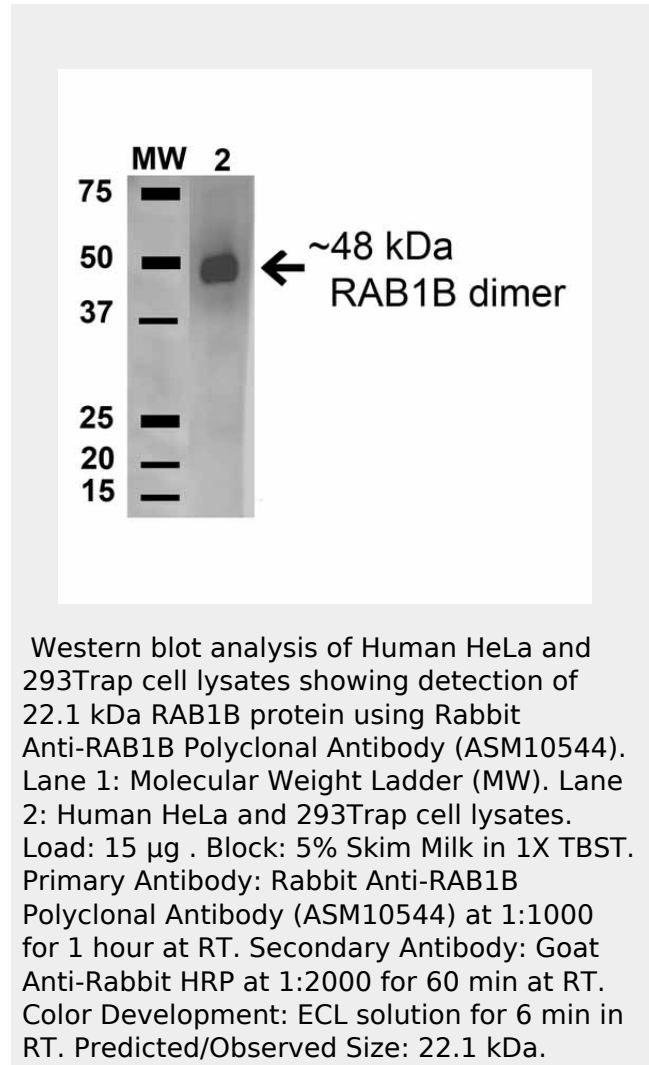
Shipping **Blue Ice or 4°C**
Temperature

Certificate of Analysis

A 1:1000 dilution of SPC-684 was sufficient for detection of RAB1B in 15 µg of Human HeLa Cell Lysates by ECL immunoblot analysis using goat anti-rabbit IgG:HRP as the secondary antibody.

Cellular Localization

Cytoplasm | Membrane | Lipid-Anchor |
Cytoplasmic Side | Preautophagosomal
Structure Membrane | Lipid-Anchor |
Cytoplasmic Side



RAB1B Antibody - Protocols

Provided below are standard protocols that you

may find useful for product applications.

- [Western Blot](#)
- [Blocking Peptides](#)
- [Dot Blot](#)
- [Immunohistochemistry](#)
- [Immunofluorescence](#)
- [Immunoprecipitation](#)
- [Flow Cytometry](#)
- [Cell Culture](#)