

IRGM Antibody
Catalog # ASM10541**Specification****IRGM Antibody - Product Information**

Application **ICC/IF, WB**
Primary Accession [A1A4Y4](#)
Other Accession [NP_001139277.1](#)
Host **Rabbit**
Reactivity **Human**
Clonality **Polyclonal**

Description

Rabbit Anti-Human IRGM Polyclonal

Target/Specificity

Detects ~20 kDa.

Other Names

Immunity related GTPase family M Antibody
ligp3 Antibody Interferon inducible protein 1
Antibody, LRG-47-like protein Antibody,
Immunity-related GTPase family M protein 1
Antibody, IFI1 Antibody, Irgm Antibody,
IRGM_HUMAN Antibody, LRG47 Antibody,
Interferon-inducible protein 1 Antibody,
IRGM1 Antibody, LRG 47 Antibody, IRGM
Antibody, ligp3 Antibody, Immunity-related
GTPase family M protein Antibody, LRG-47
Antibody, MGC149263 Antibody, Immunity
related GTPase family M protein 1 Antibody,
LPS-stimulated RAW 264.7 macrophage
protein 47 homolog Antibody

ImmunogenSynthetic peptide from the N-terminal of
Human IRGM**Purification**

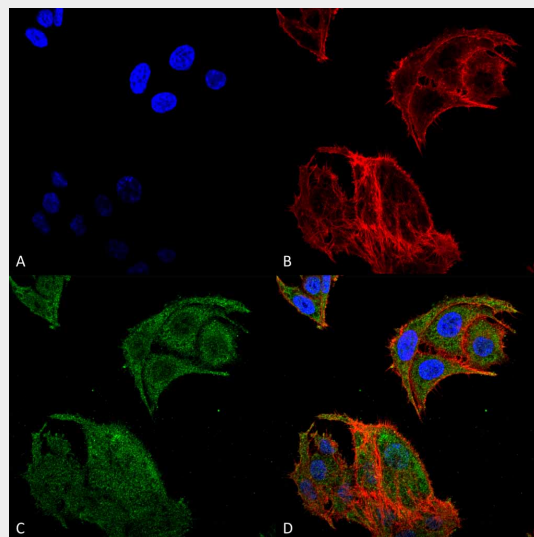
Peptide Affinity Purified

Storage **-20°C****Storage Buffer**

PBS, 50% glycerol, 0.09% sodium azide

Shipping **Blue Ice or 4°C**
Temperature**Certificate of Analysis**

A 1:1000 dilution of SPC-681 was sufficient
for detection of IRGM in 15 µg of human
HeLa cell lysates by ECL immunoblot
analysis using goat anti-rabbit IgG:HRP as
the secondary antibody.



Immunocytochemistry/Immunofluorescence analysis using Rabbit Anti-IRGM Polyclonal Antibody (ASM10541). Tissue: Colon carcinoma cell line (RKO). Species: Human. Fixation: 4% Formaldehyde for 15 min at RT. Primary Antibody: Rabbit Anti-IRGM Polyclonal Antibody (ASM10541) at 1:100 for 60 min at RT. Secondary Antibody: Goat Anti-Rabbit ATTO 488 at 1:100 for 60 min at RT. Counterstain: Phalloidin Texas Red F-Actin stain; DAPI (blue) nuclear stain at 1:1000, 1:5000 for 60 min at RT, 5 min at RT. Localization: Cell Membrane, Cytoplasmic Vesicle, Phagosome Membrane, Autophagosome Membrane. Magnification: 60X. (A) DAPI nuclear stain. (B) Phalloidin Texas Red F-Actin stain. (C) IRGM Antibody. (D) Composite.

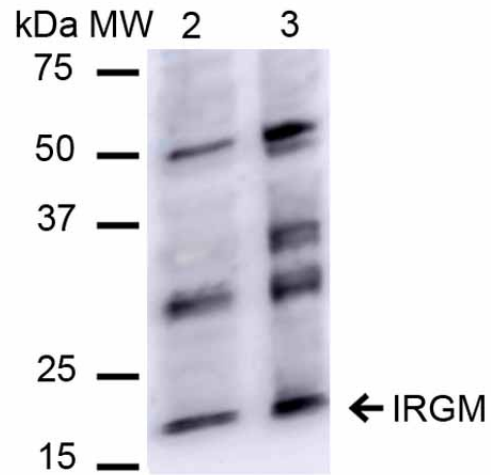
Cellular Localization

Golgi Apparatus Membrane | Cell Membrane
| Cytoplasmic Vesicle | Phagosome
Membrane | Cytoplasmic Vesicle |
Autophagosome Membrane | Cell Projection
| Phagocytic Cup

IRGM Antibody - Protocols

Provided below are standard protocols that you may find useful for product applications.

- [Western Blot](#)
- [Blocking Peptides](#)
- [Dot Blot](#)
- [Immunohistochemistry](#)
- [Immunofluorescence](#)
- [Immunoprecipitation](#)
- [Flow Cytometry](#)
- [Cell Culture](#)



Western blot analysis of Human HeLa and 293Trap cell lysates showing detection of ~20.1 kDa IRGM protein using Rabbit Anti-IRGM Polyclonal Antibody (ASM10541). Lane 1: Molecular Weight Ladder (MW). Lane 2: HeLa cell lysates. Lane 3: 293Trap cell lysates. Load: 15 μ g. Block: 5% Skim Milk in 1X TBST. Primary Antibody: Rabbit Anti-IRGM Polyclonal Antibody (ASM10541) at 1:1000 for 2 hours at RT. Secondary Antibody: Goat Anti-Rabbit IgG: HRP at 1:1000 for 60 min at RT. Color Development: ECL solution for 6 min in RT. Predicted/Observed Size: ~20.1 kDa.