

VMP1 Antibody
Catalog # ASM10540**Specification****VMP1 Antibody - Product Information**

Application **ICC/IF, WB**
Primary Accession [Q96GC9](#)
Other Accession [NP_112200.2](#)
Host **Rabbit**
Reactivity **Human**
Clonality **Polyclonal**

Description

Rabbit Anti-Human VMP1 Polyclonal

Target/Specificity

Detects ~46 kDa.

Other Names

TDC1 Antibody, Transmembrane protein 49 Antibody, TMEM49 Antibody, VMP1 Antibody, HSPC292 Antibody, Vacuole membrane protein 1 Antibody, ORF Names: Antibody

Immunogen

Synthetic peptide from the C-terminal of Human VMP1 (aa. 391-402)

Purification

Peptide Affinity Purified

Storage **-20°C****Storage Buffer**

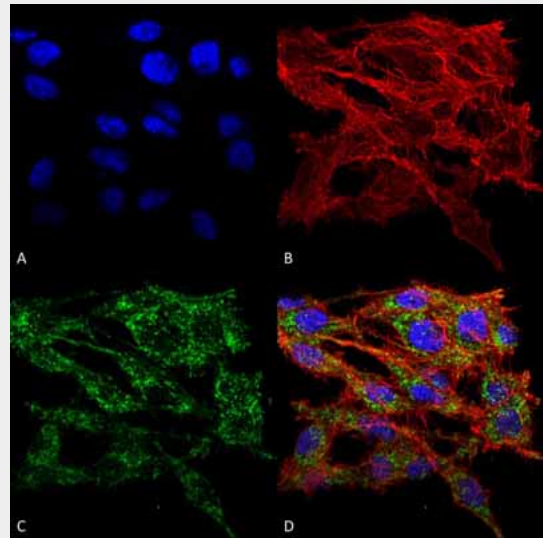
PBS, 50% glycerol, 0.09% sodium azide

Shipping **Blue Ice or 4°C**
Temperature**Certificate of Analysis**

A 1:1000 dilution of SPC-680 was sufficient for detection of VMP1 in 15 µg of Human 293T Cell Lysates by ECL immunoblot analysis using goat anti-rabbit IgG:HRP as the secondary antibody.

Cellular Localization

Endoplasmic Reticulum-Golgi Intermediate Compartment Membrane | Multi-Pass Membrane Protein | Cell Membrane | Multi-Pass Membrane Protein | Vacuole Membrane | Multi-Pass Membrane Protein | Endoplasmic Reticulum

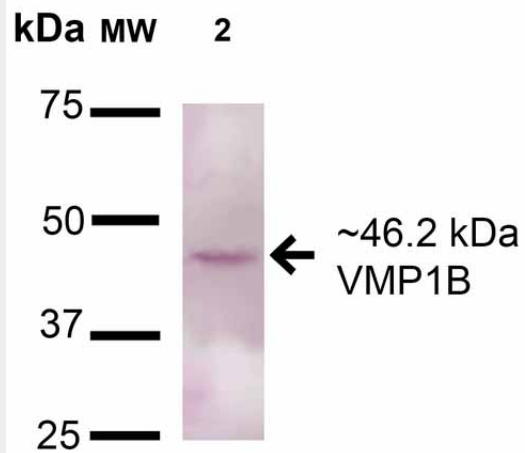


Immunocytochemistry/Immunofluorescence analysis using Rabbit Anti-VMP1 Polyclonal Antibody (ASM10540). Tissue: Colon carcinoma cell line (RKO). Species: Human. Fixation: 4% Formaldehyde for 15 min at RT. Primary Antibody: Rabbit Anti-VMP1 Polyclonal Antibody (ASM10540) at 1:100 for 60 min at RT. Secondary Antibody: Goat Anti-Rabbit ATTO 488 at 1:100 for 60 min at RT. Counterstain: Phalloidin Texas Red F-Actin stain; DAPI (blue) nuclear stain at 1:1000, 1:5000 for 60 min at RT, 5 min at RT. Localization: Endoplasmic Reticulum-Golgi Intermediate Compartment Membrane, Vacuole Membrane. Magnification: 60X. (A) DAPI nuclear stain. (B) Phalloidin Texas Red F-Actin stain. (C) VMP1 Antibody. (D) Composite.

VMP1 Antibody - Protocols

Provided below are standard protocols that you may find useful for product applications.

- [Western Blot](#)
- [Blocking Peptides](#)
- [Dot Blot](#)
- [Immunohistochemistry](#)
- [Immunofluorescence](#)
- [Immunoprecipitation](#)
- [Flow Cytometry](#)
- [Cell Culture](#)



Western blot analysis of Rat Pancreas cell lysates showing detection of 46.2kDa VMP1 protein using Rabbit Anti-VMP1 Polyclonal Antibody (ASM10540). Lane 1: Molecular Weight Ladder (MW). Lane 2: Rat Pancreas cell lysates. Load: 15 μ g . Block: 5% Skim Milk in 1X TBST. Primary Antibody: Rabbit Anti-VMP1 Polyclonal Antibody (ASM10540) at 1:1000 for 16 hours at 4°C. Secondary Antibody: Goat-Anti-Rabbit IgG: HRP at 1:200 for 60 min at RT. Color Development: TMB. Predicted/Observed Size: 46.2kDa. Other Band(s): Multiple bands for A549; Rat Brain shows a band at 60kDa, 75kDa, and 150kDa.