

ATG3 Antibody
Catalog # **ASM10537**

Specification

ATG3 Antibody - Product Information

Application **ICC/IF, WB**
Primary Accession [Q9NT62](#)
Other Accession [NP_001265641.1](#)
Host **Rabbit**
Reactivity **Human**
Clonality **Polyclonal**

Description

Rabbit Anti-Human ATG3 Polyclonal

Target/Specificity

Detects ~35 kDa.

Other Names

ATG3 Antibody, ATG3 autophagy related 3 homolog (*S. cerevisiae*) Antibody, Ubiquitin-like-conjugating enzyme ATG3 Antibody, APG3-like Antibody, APG3L Antibody, APG3, *S. cerevisiae*, homolog of Antibody, APG3 like Antibody, Apg 3 Antibody, Autophagy-related protein 3 Antibody, Apg3p Antibody, APG3 Antibody, ATG 3 Antibody, hApg3 Antibody, Autophagy related protein 3 Antibody, Autophagy 3, *S. cerevisiae*, homolog of Antibody, autophagy related 3 Antibody, ATG3_HUMAN Antibody, Protein PC3-96 Antibody, Autophagy Apg3p/Aut1p like Antibody, PC3 96 Antibody, APG3 autophagy 3 like Antibody, ATG3 autophagy related 3 homolog Antibody

Immunogen

Synthetic peptide from the mid-protein of Human ATG3

Purification

Peptide Affinity Purified

Storage **-20°C**

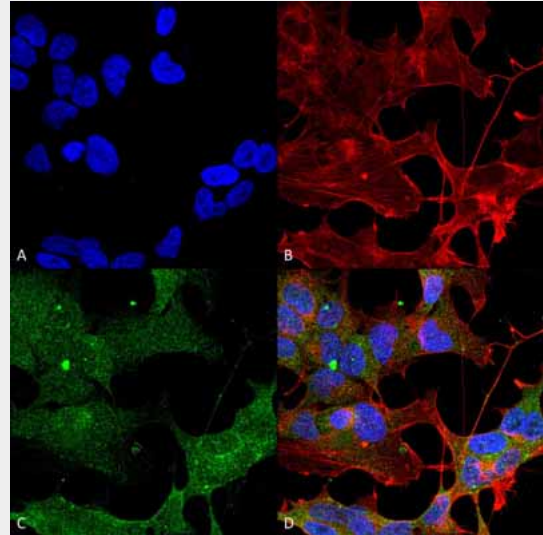
Storage Buffer

PBS, 50% glycerol, 0.09% sodium azide

Shipping **Blue Ice or 4°C**
Temperature

Certificate of Analysis

A 1:1000 dilution of SPC-671 was sufficient for detection of ATG3 in 15 µg of human



Immunocytochemistry/Immunofluorescence analysis using Rabbit Anti-ATG3 Polyclonal Antibody (ASM10537). Tissue: Neuroblastoma cell line (SK-N-BE). Species: Human. Fixation: 4% Formaldehyde for 15 min at RT. Primary Antibody: Rabbit Anti-ATG3 Polyclonal Antibody (ASM10537) at 1:100 for 60 min at RT. Secondary Antibody: Goat Anti-Rabbit ATTO 488 at 1:100 for 60 min at RT. Counterstain: Phalloidin Texas Red F-Actin stain; DAPI (blue) nuclear stain at 1:1000, 1:5000 for 60 min at RT, 5 min at RT. Localization: Cytoplasm . Magnification: 60X. (A) DAPI nuclear stain. (B) Phalloidin Texas Red F-Actin stain. (C) ATG3 Antibody. (D) Composite.

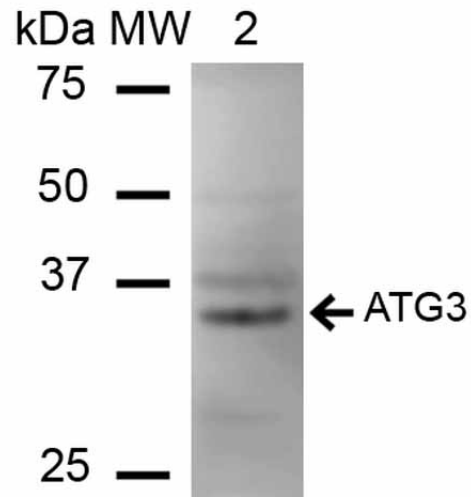
HeLa cell lysates by ECL immunoblot analysis using goat anti-rabbit IgG:HRP as the secondary antibody.

Cellular Localization
Cytoplasm

ATG3 Antibody - Protocols

Provided below are standard protocols that you may find useful for product applications.

- [Western Blot](#)
- [Blocking Peptides](#)
- [Dot Blot](#)
- [Immunohistochemistry](#)
- [Immunofluorescence](#)
- [Immunoprecipitation](#)
- [Flow Cytometry](#)
- [Cell Culture](#)



Western blot analysis of Human HeLa cell lysates showing detection of ~35.9 kDa ATG3 protein using Rabbit Anti-ATG3 Polyclonal Antibody (ASM10537). Lane 1: Molecular Weight Ladder (MW). Lane 2: HeLa cell lysates. Load: 15 μ g. Block: 5% Skim Milk in 1X TBST. Primary Antibody: Rabbit Anti-ATG3 Polyclonal Antibody (ASM10537) at 1:1000 for 60 min at RT. Secondary Antibody: Goat Anti-Rabbit IgG: HRP at 1:2000 for 60 min at RT. Color Development: ECL solution for 6 min in RT. Predicted/Observed Size: ~35.9 kDa.