

ATG10 Antibody
Catalog # ASM10536**Specification****ATG10 Antibody - Product Information**

Application **ICC/IF, WB**
Primary Accession [Q9HOY0](#)
Other Accession [NP_001124500.1](#)
Host **Rabbit**
Reactivity **Human**
Clonality **Polyclonal**

Description

Rabbit Anti-Human ATG10 Polyclonal

Target/Specificity

Detects ~25 kDa.

Other Names

APG 10L Antibody, APG10 like Antibody, Apg 10 Antibody, DKFZP586I0418 Antibody, ATG10 Antibody, ORF Names: Antibody, Ubiquitin-like-conjugating enzyme ATG10 Antibody, APG10, *S. cerevisiae*, homolog of Antibody, ATG10_HUMAN Antibody, ATG 10 Antibody, APG10-like Antibody, Autophagy related protein 10 Antibody, APG10 Antibody, Autophagy-related protein 10 Antibody, autophagy 10, *S. cerevisiae*, homolog of Antibody, APG10L Antibody, ATG10 autophagy related 10 homolog Antibody, ATG10 autophagy related 10 homolog (*S. cerevisiae*) Antibody, FLJ13954 Antibody, PP12616 Antibody, APG10 autophagy 10 like Antibody, pp12616 Antibody

Immunogen

Synthetic peptide from the mid-protein of Human ATG10

Purification

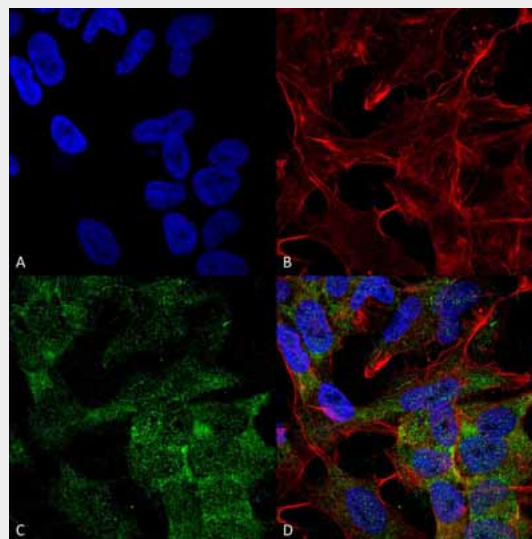
Peptide Affinity Purified

Storage **-20°C****Storage Buffer**

PBS, 50% glycerol, 0.09% sodium azide

Shipping **Blue Ice or 4°C**
Temperature**Certificate of Analysis**

A 1:1000 dilution of SPC-669 was sufficient for detection of ATG10 in 15 µg of human



Immunocytochemistry/Immunofluorescence analysis using Rabbit Anti-ATG10 Polyclonal Antibody (ASM10536). Tissue: Neuroblastoma cell line (SK-N-BE). Species: Human. Fixation: 4% Formaldehyde for 15 min at RT. Primary Antibody: Rabbit Anti-ATG10 Polyclonal Antibody (ASM10536) at 1:100 for 60 min at RT. Secondary Antibody: Goat Anti-Rabbit ATTO 488 at 1:100 for 60 min at RT. Counterstain: Phalloidin Texas Red F-Actin stain; DAPI (blue) nuclear stain at 1:1000, 1:5000 for 60 min at RT, 5 min at RT. Localization: Cytoplasm . Magnification: 60X. (A) DAPI nuclear stain. (B) Phalloidin Texas Red F-Actin stain. (C) ATG10 Antibody . (D) Composite.

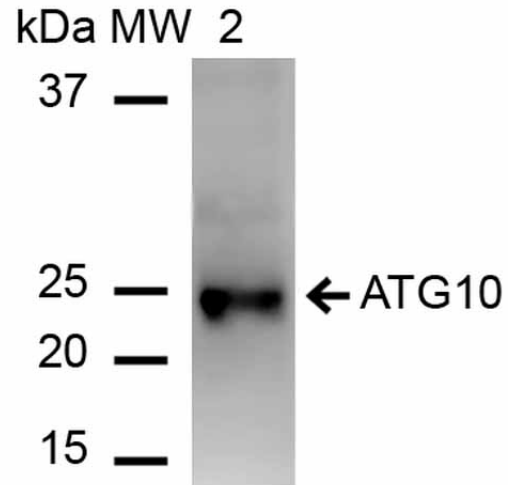
HEK293T cell lysates by ECL immunoblot analysis using goat anti-rabbit IgG:HRP as the secondary antibody.

Cellular Localization
Cytoplasm

ATG10 Antibody - Protocols

Provided below are standard protocols that you may find useful for product applications.

- [Western Blot](#)
- [Blocking Peptides](#)
- [Dot Blot](#)
- [Immunohistochemistry](#)
- [Immunofluorescence](#)
- [Immunoprecipitation](#)
- [Flow Cytometry](#)
- [Cell Culture](#)



Western blot analysis of Human HEK293 cell lysates showing detection of ~25.3 kDa ATG10 protein using Rabbit Anti-ATG10 Polyclonal Antibody (ASM10536). Lane 1: Molecular Weight Ladder (MW). Lane 2: Hek293T cell lysates. Load: 15 μ g. Block: 5% Skim Milk in 1X TBST. Primary Antibody: Rabbit Anti-ATG10 Polyclonal Antibody (ASM10536) at 1:1000 for 60 min at RT. Secondary Antibody: Goat Anti-Rabbit IgG: HRP at 1:2000 for 60 min at RT. Color Development: ECL solution for 6 min in RT. Predicted/Observed Size: ~25.3 kDa.