

**Bcl-2 Antibody**  
Catalog # **ASM10529**

**Specification**

**Bcl-2 Antibody - Product Information**

Application **WB**  
Primary Accession [P10415](#)  
Other Accession [NP\\_000624.2](#)  
Host **Rabbit**  
Reactivity **Human, Rat**  
Clonality **Polyclonal**

**Description**

Rabbit Anti-Human Bcl-2 Polyclonal

**Target/Specificity**

Detects ~26 kDa.

**Other Names**

Protein phosphatase 1 regulatory subunit 50 Antibody, AW986256 Antibody, BCL2\_HUMAN Antibody, Bcl2 Antibody, Apoptosis regulator Bcl2 Antibody, BCL2 Antibody, B cell leukemia/lymphoma 2 Antibody, Leukemia/lymphoma, B-cell, 2 Antibody, B cell CLL/lymphoma 2 Antibody, Bcl-2 Antibody, Oncogene B-cell leukemia 2 Antibody, D830018M01Rik Antibody, PPP1R50 Antibody, D630044D05Rik Antibody, Apoptosis regulator Bcl-2 Antibody, C430015F12Rik Antibody

**Immunogen**

Synthetic peptide from the mid-protein of Human Bcl-2

**Purification**

Peptide Affinity Purified

Storage **-20°C**

**Storage Buffer**

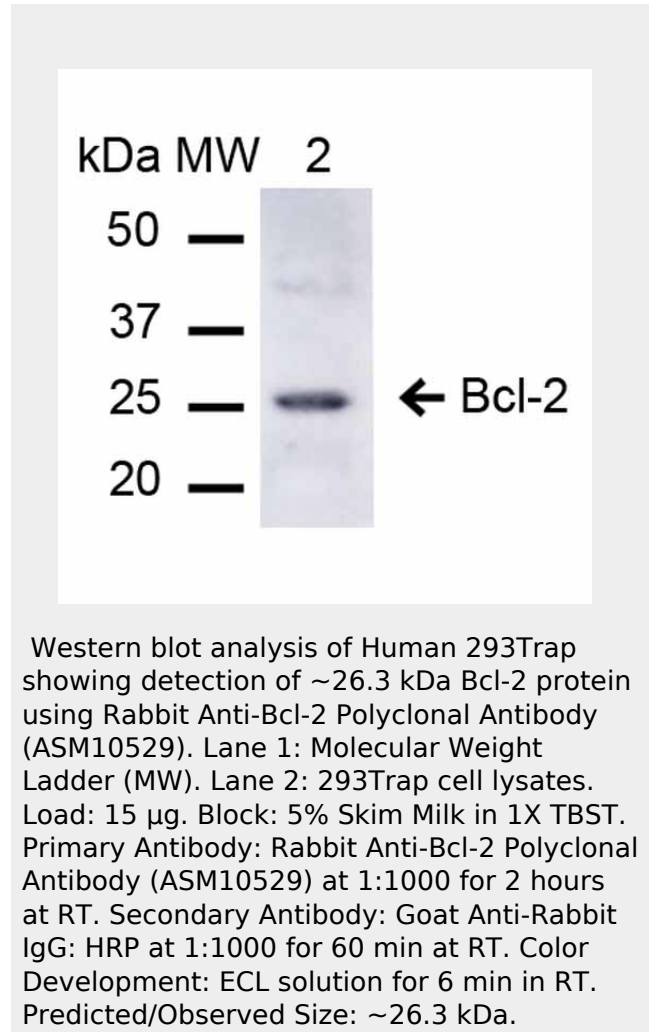
PBS, 50% glycerol, 0.09% sodium azide

Shipping **Blue Ice or 4°C**  
Temperature

**Certificate of Analysis**

A 1:1000 dilution of SPC-655 was sufficient for detection of Bcl-2 in 15 µg of human 293Trap cell lysates by ECL immunoblot analysis using goat anti-rabbit IgG:HRP as the secondary antibody.

**Cellular Localization**



Mitochondrion Outer Membrane |  
Single-Pass Membrane Protein | Nucleus  
Membrane | Single-Pass Membrane Protein |  
Endoplasmic Reticulum Membrane |  
Single-Pass Membrane Protein

### **Bcl-2 Antibody - Protocols**

Provided below are standard protocols that you may find useful for product applications.

- [Western Blot](#)
- [Blocking Peptides](#)
- [Dot Blot](#)
- [Immunohistochemistry](#)
- [Immunofluorescence](#)
- [Immunoprecipitation](#)
- [Flow Cytometry](#)
- [Cell Culture](#)