

**ATG2A Antibody: ATTO 390**  
Catalog # ASM10528**Specification****ATG2A Antibody: ATTO 390 - Product Information**

Application **ICC/IF, WB**  
Primary Accession [Q2TAZ0](#)  
Other Accession [NP\\_055919.2](#)  
Host **Rabbit**  
Reactivity **Human**  
Clonality **Polyclonal**

**Description**

Rabbit Anti-Human ATG2A Polyclonal

**Target/Specificity**

Predicted molecular weights at ~213kDa.  
Other observed bands around ~90-100kDa to be expected.

**Other Names**

ATG2 autophagy related homolog A Antibody, ATG2a\_HUMAN Antibody, BC023754 Antibody, KIAA0404 Antibody, 1810013C15Rik Antibody

**Immunogen**

Synthetic peptide from the C-terminal of human ATG2A

**Purification**

Peptide Affinity Purified

Storage **-20°C**

**Storage Buffer**

PBS, 50% glycerol, 0.09% sodium azide

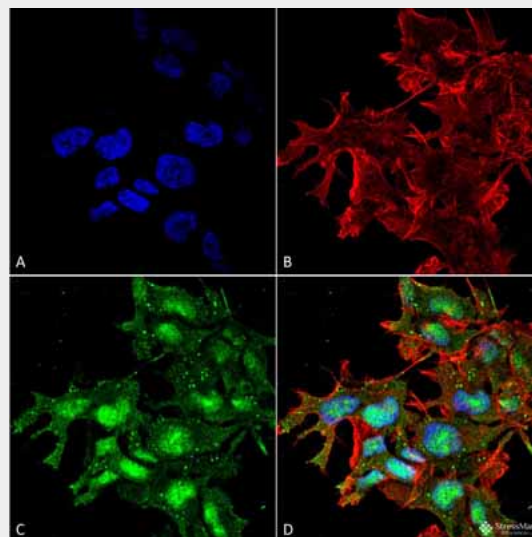
Shipping **Blue Ice or 4°C**  
Temperature

**Certificate of Analysis**

A 1:1000 dilution of SPC-652 was sufficient for detection of ATG2A on HeLa cell lysates using Goat anti-rabbit IgG:HRP as the secondary antibody.

**Cellular Localization**

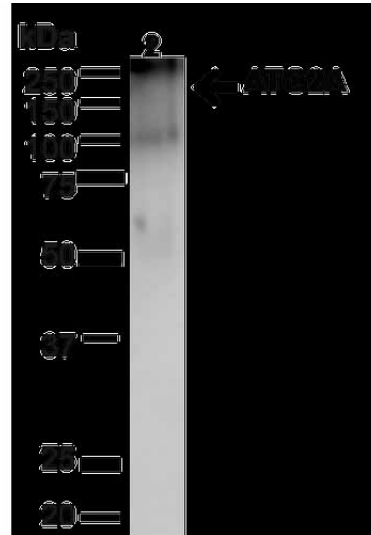
Preautophagosomal Structure Membrane | Peripheral membrane protein

**ATG2A Antibody: ATTO 390 - Protocols**

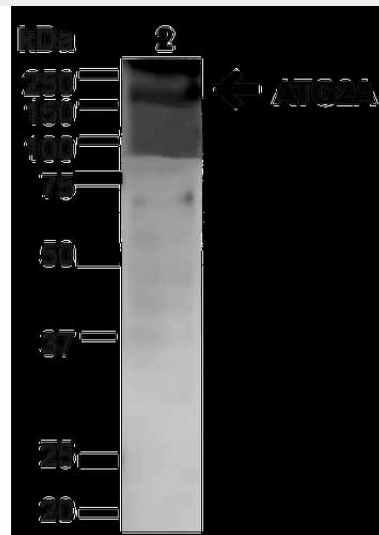
Immunocytochemistry/Immunofluorescence analysis using Rabbit Anti-ATG2A Polyclonal Antibody (ASM10528). Tissue: Neuroblastoma cell line (SK-N-BE). Species: Human. Fixation: 4% Formaldehyde for 15 min at RT. Primary Antibody: Rabbit Anti-ATG2A Polyclonal Antibody (ASM10528) at 1:100 for 60 min at RT. Secondary Antibody: Goat Anti-Rabbit ATTO 488 at 1:100 for 60 min at RT. Counterstain: Phalloidin Texas Red F-Actin stain; DAPI (blue) nuclear stain at 1:1000, 1:5000 for 60min RT, 5min RT. Localization: Nucleus, Cytoplasm. Magnification: 60X. (A) DAPI (blue) nuclear stain (B) Phalloidin Texas Red F-Actin stain (C) ATG2A Antibody (D) Composite.

Provided below are standard protocols that you may find useful for product applications.

- [Western Blot](#)
- [Blocking Peptides](#)
- [Dot Blot](#)
- [Immunohistochemistry](#)
- [Immunofluorescence](#)
- [Immunoprecipitation](#)
- [Flow Cytometry](#)
- [Cell Culture](#)



Western blot analysis of Mouse Brain showing detection of ~212.9kDa ATG2A protein using Rabbit Anti-ATG2A Polyclonal Antibody (ASM10528). Lane 1: MW Ladder. Lane 2: Mouse Brain (20  $\mu$ g). Load: 20  $\mu$ g. Block: 5% milk + TBST for 1 hour at RT. Primary Antibody: Rabbit Anti-ATG2A Polyclonal Antibody (ASM10528) at 1:1000 for 1 hour at RT. Secondary Antibody: Goat Anti-Rabbit: HRP at 1:2000 for 1 hour at RT. Color Development: TMB solution for 12 min at RT. Predicted/Observed Size: ~212.9kDa.



Western blot analysis of Human HeLa cell lysates showing detection of ~212.9kDa ATG2A protein using Rabbit Anti-ATG2A Polyclonal Antibody (ASM10528). Lane 1: MW Ladder. Lane 2: Human HeLa (20  $\mu$ g). Load: 20  $\mu$ g. Block: 5% milk + TBST for 1 hour at RT. Primary Antibody: Rabbit Anti-ATG2A Polyclonal Antibody (ASM10528) at 1:1000 for 1 hour at RT. Secondary Antibody: Goat

Anti-Rabbit: HRP at 1:2000 for 1 hour at RT.  
Color Development: TMB solution for 12 min  
at RT. Predicted/Observed Size: ~212.9kDa.

### **ATG2A Antibody: ATTO 390 - Background**

ATG2A belongs to the ATG2 family. It is required for both autophagosome formation and regulation of lipid droplet morphology and dispersion (1).

### **ATG2A Antibody: ATTO 390 - References**

1. Velikkakath A.K., Nishimura T., Oita E., Ishihara N., Mizushima N. (2012) Mol Biol Cell. 23(5): 896-909.