

ATG2A Antibody
Catalog # ASM10527**Specification****ATG2A Antibody - Product Information**

Application **ICC/IF, WB**
Primary Accession [Q2TAZ0](#)
Other Accession [NP_055919.2](#)
Host **Rabbit**
Reactivity **Human**
Clonality **Polyclonal**

Description

Rabbit Anti-Human ATG2A Polyclonal

Target/Specificity

Predicted molecular weights at ~213kDa.
Other observed bands around ~90-100kDa to be expected.

Other Names

ATG2 autophagy related homolog A Antibody, ATG2a_HUMAN Antibody, BC023754 Antibody, KIAA0404 Antibody, 1810013C15Rik Antibody

Immunogen

Synthetic peptide from the C-terminal of human ATG2A

Purification

Peptide Affinity Purified

Storage **-20°C**

Storage Buffer

PBS, 50% glycerol, 0.09% sodium azide

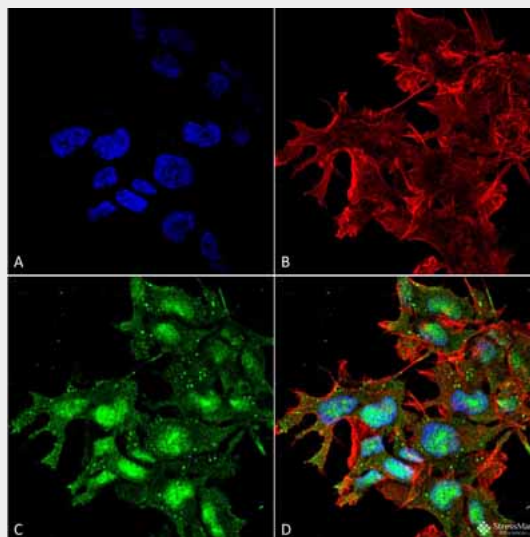
Shipping **Blue Ice or 4°C**
Temperature

Certificate of Analysis

A 1:1000 dilution of SPC-652 was sufficient for detection of ATG2A on HeLa cell lysates using Goat anti-rabbit IgG:HRP as the secondary antibody.

Cellular Localization

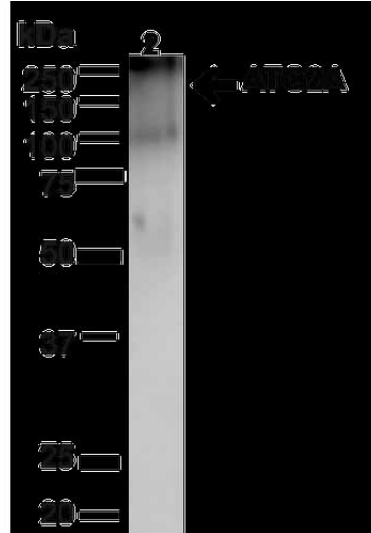
Preautophagosomal Structure Membrane |
Peripheral membrane protein

ATG2A Antibody - Protocols

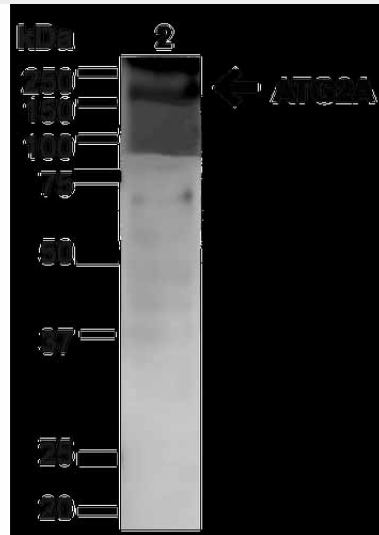
Immunocytochemistry/Immunofluorescence analysis using Rabbit Anti-ATG2A Polyclonal Antibody (ASM10527). Tissue: Neuroblastoma cell line (SK-N-BE). Species: Human. Fixation: 4% Formaldehyde for 15 min at RT. Primary Antibody: Rabbit Anti-ATG2A Polyclonal Antibody (ASM10527) at 1:100 for 60 min at RT. Secondary Antibody: Goat Anti-Rabbit ATTO 488 at 1:100 for 60 min at RT. Counterstain: Phalloidin Texas Red F-Actin stain; DAPI (blue) nuclear stain at 1:1000, 1:5000 for 60min RT, 5min RT. Localization: Nucleus, Cytoplasm. Magnification: 60X. (A) DAPI (blue) nuclear stain (B) Phalloidin Texas Red F-Actin stain (C) ATG2A Antibody (D) Composite.

Provided below are standard protocols that you may find useful for product applications.

- [Western Blot](#)
- [Blocking Peptides](#)
- [Dot Blot](#)
- [Immunohistochemistry](#)
- [Immunofluorescence](#)
- [Immunoprecipitation](#)
- [Flow Cytometry](#)
- [Cell Culture](#)



Western blot analysis of Mouse Brain showing detection of ~212.9kDa ATG2A protein using Rabbit Anti-ATG2A Polyclonal Antibody (ASM10527). Lane 1: MW Ladder. Lane 2: Mouse Brain (20 μ g). Load: 20 μ g. Block: 5% milk + TBST for 1 hour at RT. Primary Antibody: Rabbit Anti-ATG2A Polyclonal Antibody (ASM10527) at 1:1000 for 1 hour at RT. Secondary Antibody: Goat Anti-Rabbit: HRP at 1:2000 for 1 hour at RT. Color Development: TMB solution for 12 min at RT. Predicted/Observed Size: ~212.9kDa.



Western blot analysis of Human HeLa cell lysates showing detection of ~212.9kDa ATG2A protein using Rabbit Anti-ATG2A Polyclonal Antibody (ASM10527). Lane 1: MW Ladder. Lane 2: Human HeLa (20 μ g). Load: 20 μ g. Block: 5% milk + TBST for 1 hour at RT. Primary Antibody: Rabbit Anti-ATG2A Polyclonal Antibody (ASM10527) at 1:1000 for 1 hour at RT. Secondary Antibody: Goat

Anti-Rabbit: HRP at 1:2000 for 1 hour at RT.
Color Development: TMB solution for 12 min
at RT. Predicted/Observed Size: ~212.9kDa.

ATG2A Antibody - Background

ATG2A belongs to the ATG2 family. It is required for both autophagosome formation and regulation of lipid droplet morphology and dispersion (1).

ATG2A Antibody - References

1. Velikkakath A.K., Nishimura T., Oita E., Ishihara N., Mizushima N. (2012) Mol Biol Cell. 23(5): 896-909.