

AMBRA1 Antibody
Catalog # ASM10523**Specification****AMBRA1 Antibody - Product Information**

Application **ICC/IF, WB**
Primary Accession [Q9C0C7](#)
Other Accession [NP_001254711.1](#)
Host **Rabbit**
Reactivity **Human, Rat**
Clonality **Polyclonal**

Description

Rabbit Anti-Human AMBRA1 Polyclonal

Target/Specificity

Detects ~142 kDa.

Other Names

AMBRA1 Antibody, Activating molecule in BECN1-regulated autophagy protein 1 Antibody, KIAA1736 Antibody

Immunogen

Synthetic peptide from the C-terminal of Human AMBRA1 (aa. 202-212)

Purification

Peptide Affinity Purified

Storage **-20°C**

Storage Buffer

PBS, 50% glycerol, 0.09% sodium azide

Shipping **Blue Ice or 4°C**
Temperature

Certificate of Analysis

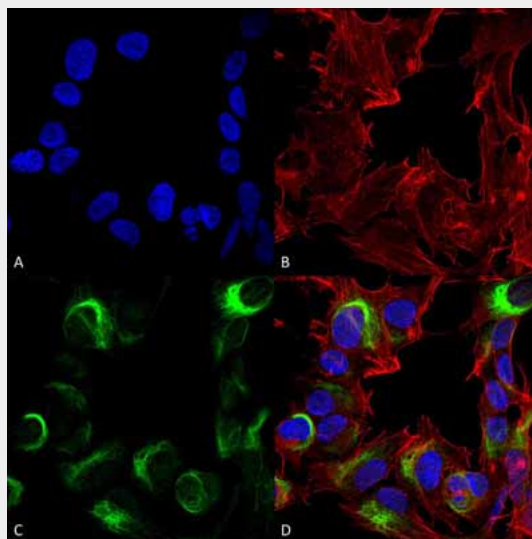
A 1:1000 dilution of SPC-644 was sufficient for detection of AMBRA1 in 15 µg of Rat Brain Lysates by ECL immunoblot analysis using goat anti-rabbit IgG:HRP as the secondary antibody.

Cellular Localization

Cytoplasmic Vesicle | Autophagosome

AMBRA1 Antibody - Protocols

Provided below are standard protocols that you may find useful for product applications.



Immunocytochemistry/Immunofluorescence analysis using Rabbit Anti-AMBRA1 Polyclonal Antibody (ASM10523). Tissue: Neuroblastoma cell line (SK-N-BE). Species: Human. Fixation: 4% Formaldehyde for 15 min at RT. Primary Antibody: Rabbit Anti-AMBRA1 Polyclonal Antibody (ASM10523) at 1:100 for 60 min at RT. Secondary Antibody: Goat Anti-Mouse ATTO 488 at 1:200 for 60 min at RT. Counterstain: Phalloidin Texas Red F-Actin stain; DAPI (blue) nuclear stain at 1:1000, 1:5000 for 60 min at RT, 5 min at RT. Localization: Cytoplasmic Vesicle, Autophagosome. Magnification: 60X. (A) DAPI (blue) nuclear stain (B) Phalloidin Texas Red F-Actin stain (C) AMBRA1 Antibody (D) Composite.

- [Western Blot](#)
- [Blocking Peptides](#)
- [Dot Blot](#)
- [Immunohistochemistry](#)
- [Immunofluorescence](#)
- [Immunoprecipitation](#)
- [Flow Cytometry](#)
- [Cell Culture](#)

