

**ULK3 Antibody**  
Catalog # ASM10522**Specification****ULK3 Antibody - Product Information**

Application **ICC/IF, WB**  
Primary Accession [O6PHR2](#)  
Other Accession [NP\\_001092906.3](#)  
Host **Rabbit**  
Reactivity **Human, Mouse, Rat**  
Clonality **Polyclonal**  
**Description**  
Rabbit Anti-Human ULK3 Polyclonal

**Target/Specificity**  
Detects ~53 kDa.

**Other Names**

Serine/threonine-protein kinase ULK3  
Antibody, EC:2.7.11.1 Antibody, Ulk3  
Antibody, DKFZP434C131 Antibody,  
Unc-51-like kinase 3 Antibody, FLJ90566  
Antibody, ULK3\_HUMAN Antibody, unc 51  
like kinase 3 (C. elegans) Antibody, ULK3  
Antibody,

**Immunogen**

Synthetic peptide from the N-terminal of  
Human ULK3 (aa. 166-177)

**Purification**

Peptide Affinity Purified

Storage **-20°C**

**Storage Buffer**

PBS, 50% glycerol, 0.09% sodium azide

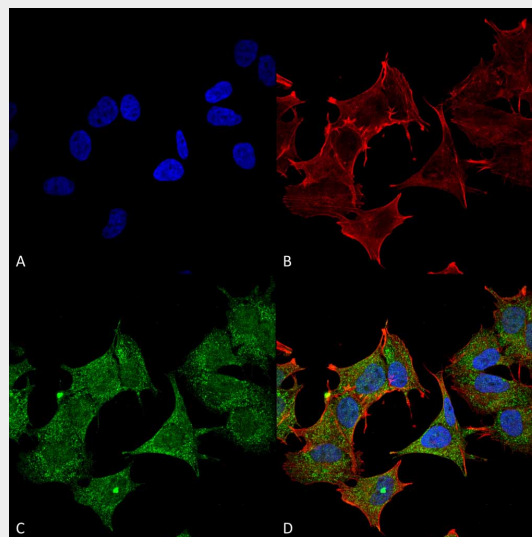
Shipping **Blue Ice or 4°C**  
Temperature

**Certificate of Analysis**

A 1:1000 dilution of SPC-642 was sufficient  
for detection of ULK3 in 15 µg of Human  
HeLa Cell Lysates by ECL immunoblot  
analysis using goat anti-rabbit IgG:HRP as  
the secondary antibody.

**Cellular Localization**

Cytoplasm

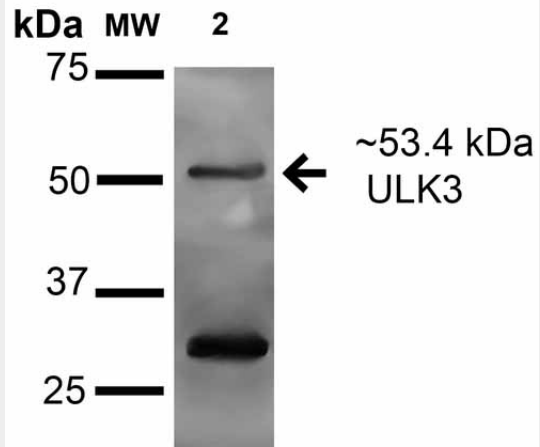


Immunocytochemistry/Immunofluorescence analysis using Rabbit Anti-ULK3 Polyclonal Antibody (ASM10522). Tissue: Neuroblastoma cell line (SK-N-BE). Species: Human. Fixation: 4% Formaldehyde for 15 min at RT. Primary Antibody: Rabbit Anti-ULK3 Polyclonal Antibody (ASM10522) at 1:100 for 60 min at RT. Secondary Antibody: Goat Anti-Mouse ATTO 488 at 1:200 for 60 min at RT. Counterstain: Phalloidin Texas Red F-Actin stain; DAPI (blue) nuclear stain at 1:1000, 1:5000 for 60 min at RT, 5 min at RT. Localization: Cytoplasm. Magnification: 60X. (A) DAPI (blue) nuclear stain (B) Phalloidin Texas Red F-Actin stain (C) ULK3 Antibody (D) Composite.

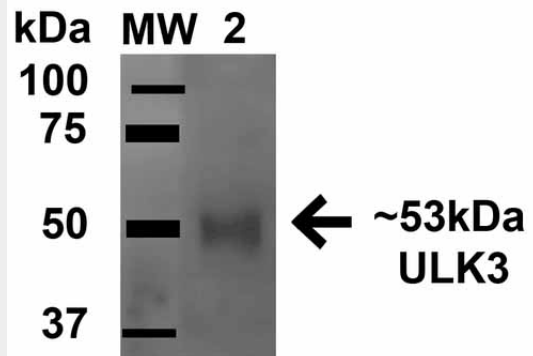
## ULK3 Antibody - Protocols

Provided below are standard protocols that you may find useful for product applications.

- [Western Blot](#)
- [Blocking Peptides](#)
- [Dot Blot](#)
- [Immunohistochemistry](#)
- [Immunofluorescence](#)
- [Immunoprecipitation](#)
- [Flow Cytometry](#)
- [Cell Culture](#)



Western blot analysis of Human A549 cell lysates showing detection of 53.4 kDa ULK3 protein using Rabbit Anti-ULK3 Polyclonal Antibody (ASM10522). Lane 1: Molecular Weight Ladder (MW). Lane 2: Human A549 cell lysates. Load: 15  $\mu$ g . Block: 2% BSA and 2% Skim Milk in 1X TBST. Primary Antibody: Rabbit Anti-ULK3 Polyclonal Antibody (ASM10522) at 1:1000 for 16 hours at 4°C. Secondary Antibody: Goat Anti-Rabbit IgG: HRP at 1:2000 for 60 min at RT. Color Development: ECL solution for 6 min in RT. Predicted/Observed Size: 53.4 kDa. Other Band(s): ~25 kDa in all lysates.



Western blot analysis of Rat Brain cell lysates showing detection of 53.4 kDa ULK3 protein using Rabbit Anti-ULK3 Polyclonal Antibody (ASM10522). Lane 1: Molecular Weight Ladder (MW). Lane 2: Rat Brain cell lysates. Load: 15  $\mu$ g . Block: 5% Skim Milk in 1X TBST. Primary Antibody: Rabbit Anti-ULK3

Polyclonal Antibody (ASM10522) at 1:1000 for 1 hour at RT. Secondary Antibody: Goat Anti-Rabbit HRP at 1:2000 for 60 min at RT. Color Development: ECL solution for 6 min in RT. Predicted/Observed Size: 53.4 kDa.

### **ULK3 Antibody - Background**

UNC-51 like kinase 3, ULK3, is a serine-threonine protein kinase that acts as a regulator of SHH signaling and autophagy. It phosphorylates in vitro GLI2.

### **ULK3 Antibody - References**

1. Malovergan A., et al. (2010) J Biol Chem. 285(39): 30079-30090.
2. Young A.R., et al. (2009) Genes Dev. 23(7):798-803.