

**GABARAP Antibody**  
Catalog # ASM10503**Specification****GABARAP Antibody - Product Information**

Application **ICC/IF, WB**  
Primary Accession [O95166](#)  
Other Accession [NP\\_009209.1](#)  
Host **Rabbit**  
Reactivity **Human**  
Clonality **Polyclonal**

**Description**

Rabbit Anti-Human GABARAP Polyclonal

**Target/Specificity**

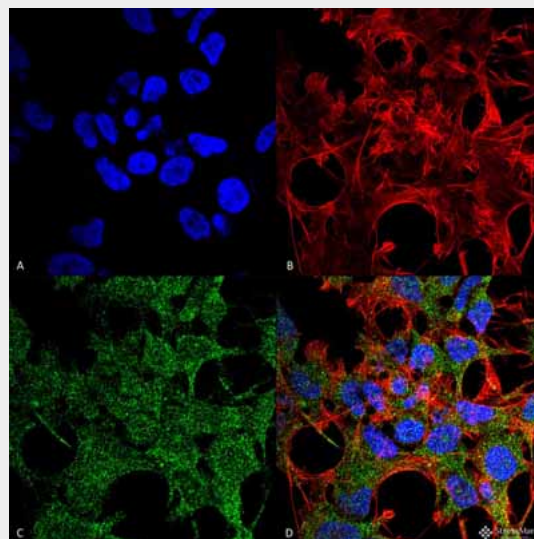
Detects ~14-16kDa.

**Other Names**ATG8A Antibody, GABARAP A Antibody,  
GABA(A) Receptor Associated Protein  
Antibody, MM46 Antibody**Immunogen**Synthetic peptide from the N-terminal of  
human GABARAP**Purification**

Peptide Affinity Purified

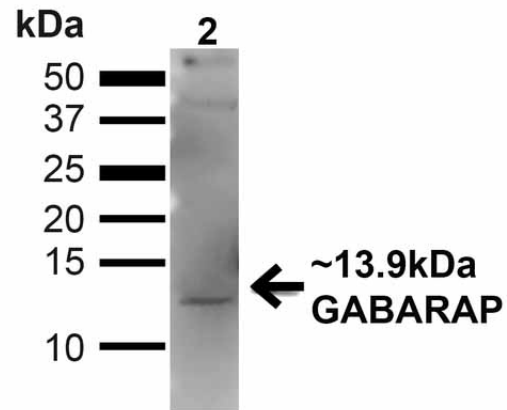
Storage **-20°C****Storage Buffer**

PBS, 50% glycerol, 0.09% sodium azide

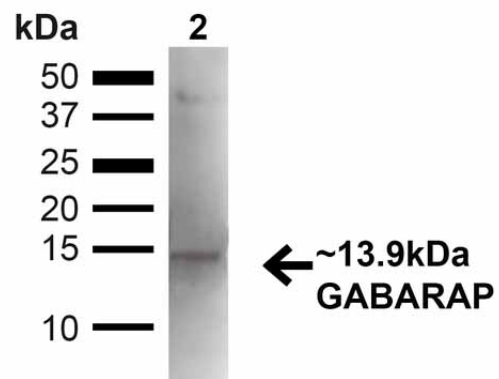
Shipping **Blue Ice or 4°C**  
Temperature**Certificate of Analysis**A 1:1000 dilution of SPC-620 was sufficient  
for detection of GABARAP on mouse kidney  
lysates using Goat anti-rabbit IgG:HRP as  
the secondary antibody.**Cellular Localization**Endomembrane System | Cytoplasm |  
Cytoskeleton | Golgi Apparatus | Golgi  
Apparatus Membrane | Cytoplasmic Vesicle**GABARAP Antibody - Protocols**Provided below are standard protocols that you  
may find useful for product applications.

Immunocytochemistry/Immunofluorescence analysis using Rabbit Anti-GABARAP Polyclonal Antibody (ASM10503). Tissue: Neuroblastoma cell line (SK-N-BE). Species: Human. Fixation: 4% Formaldehyde for 15 min at RT. Primary Antibody: Rabbit Anti-GABARAP Polyclonal Antibody (ASM10503) at 1:100 for 60 min at RT. Secondary Antibody: Goat Anti-Rabbit ATTO 488 at 1:100 for 60 min at RT. Counterstain: Phalloidin Texas Red F-Actin stain; DAPI (blue) nuclear stain at 1:1000, 1:5000 for 60min RT, 5min RT. Localization: Endomembrane System, Cytoplasm, Golgi Apparatus Membrane, Cytoplasmic Vesicle. Magnification: 60X. (A) DAPI (blue) nuclear stain (B) Phalloidin Texas Red F-Actin stain (C) GABARAP Antibody (D) Composite.

- [Western Blot](#)
- [Blocking Peptides](#)
- [Dot Blot](#)
- [Immunohistochemistry](#)
- [Immunofluorescence](#)
- [Immunoprecipitation](#)
- [Flow Cytometry](#)
- [Cell Culture](#)



Western blot analysis of Human 293T showing detection of ~13.9kDa GABARAP protein using Rabbit Anti-GABARAP Polyclonal Antibody (ASM10503). Lane 1: MW Ladder. Lane 2: Human 293T (20 µg). Load: 20 µg. Block: 5% milk + TBST for 1 hour at RT. Primary Antibody: Rabbit Anti-GABARAP Polyclonal Antibody (ASM10503) at 1:1000 for 1 hour at RT. Secondary Antibody: Goat Anti-Rabbit: HRP at 1:2000 for 1 hour at RT. Color Development: TMB solution for 12 min at RT. Predicted/Observed Size: ~13.9kDa. Other Band(s): ~40kDa (Complex).



Western blot analysis of Mouse Kidney showing detection of ~13.9kDa GABARAP protein using Rabbit Anti-GABARAP Polyclonal Antibody (ASM10503). Lane 1: MW Ladder. Lane 2: Mouse Kidney (20 µg). Load: 20 µg. Block: 5% milk + TBST for 1 hour at RT. Primary Antibody: Rabbit Anti-GABARAP Polyclonal Antibody (ASM10503) at 1:1000

for 1 hour at RT. Secondary Antibody: Goat Anti-Rabbit: HRP at 1:2000 for 1 hour at RT. Color Development: TMB solution for 12 min at RT. Predicted/Observed Size: ~13.9kDa. Other Band(s): ~40kDa (Complex).

### **GABARAP Antibody - Background**

Gamma-aminobutyric acid receptor-associated protein, or GABARAP, are ligand gated chloride channels that mediate inhibitory neurotransmission. It clusters neurotransmitter receptors by mediating its interaction with the cytoskeleton (1).

### **GABARAP Antibody - References**

1. "Entrez Gene: GABARAP GABA(A) receptor-associated protein".