

Amyloid Fibrils (OC) Antibody
Catalog # ASM10488

Specification

Amyloid Fibrils (OC) Antibody - Product Information

Application **IHC, WB, DB**
Host **Rabbit**
Reactivity **Human**
Clonality **Polyclonal**

Description

Rabbit Anti-Human Amyloid Fibrils (OC)
Polyclonal

Target/Specificity

Recognizes generic epitopes common to many amyloid fibrils and fibrillar oligomers, but not prefibrillar oligomers or natively folded proteins. Expected to detect in Mouse and Rat based on species homology.

Other Names

OC Antibody, Fibrils Antibody, Amyloid Oligomer α S Antibody, A11 Antibody, Amyloid beta A4 protein Antibody, ABPP Antibody, APPI Antibody, Alzheimer disease amyloid protein Antibody, Cerebral vascular amyloid peptide Antibody, PreA4 Antibody, Protease nexin-II Antibody, APP Antibody, A4 Antibody, AD Antibody

Immunogen

Fibrils prepared from human amyloid beta 42 peptide

Purification

Protein A Purified

Storage **-20°C**

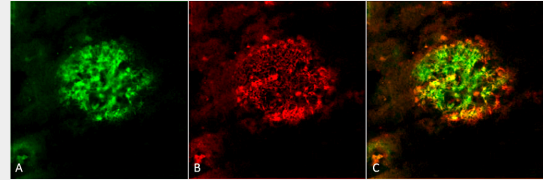
Storage Buffer

PBS, 50% glycerol, 0.09% sodium azide

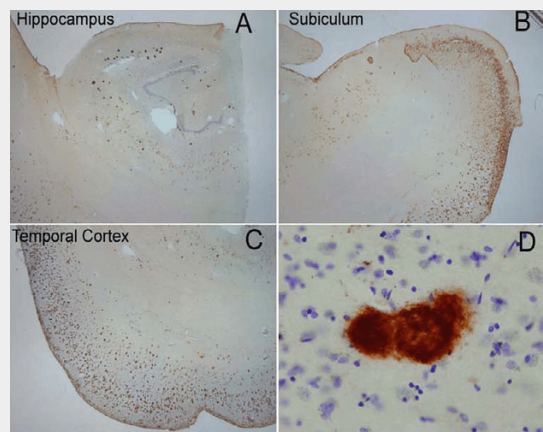
Shipping **Blue Ice or 4°C**
Temperature

Certificate of Analysis

A 1:1000 dilution of SPC-507 was sufficient for detection of amyloid fibrils on PVDF membranes using transferred fibrils by colorimetric dot blot analysis using Goat anti-rabbit IgG:HRP as the secondary antibody.



Immunohistochemistry analysis using Rabbit Anti-Amyloid Fibrils (OC) Polyclonal Antibody (ASM10488). Tissue: Alzheimer's Disease brain. Species: Human. Fixation: Formalin fixed. Primary Antibody: Rabbit Anti-Amyloid Fibrils (OC) Polyclonal Antibody (ASM10488) at 1:5000. Secondary Antibody: Goat Anti-Rabbit ATTO 488 (green). Localization: Plaque. (A) Amyloid Fibril (OC) Antibody (ASM10488). (B) Amyloid Oligomer (A11) Antibody (SPC-506). (C) Composite. Courtesy of: Dr. Elizabeth Head, University of California, Irvine.



Immunohistochemistry analysis using Rabbit Anti-Amyloid Fibrils (OC) Polyclonal Antibody (ASM10488). Tissue: Alzheimer's Disease brain. Species: Human. Primary Antibody: Rabbit Anti-Amyloid Fibrils (OC) Polyclonal Antibody (ASM10488) at 1:100. Extensive OC labeling was observed in the hippocampus (A), subiculum (B) and frontal cortex (C) in Alzheimer disease. A higher magnification image illustrates that OC positive deposits were dense and consisted of fine fibrillar material (D). Courtesy of: Kayed, R., Head, E., Thompson, J. L., McIntire, T. M., Milton, S. C.,

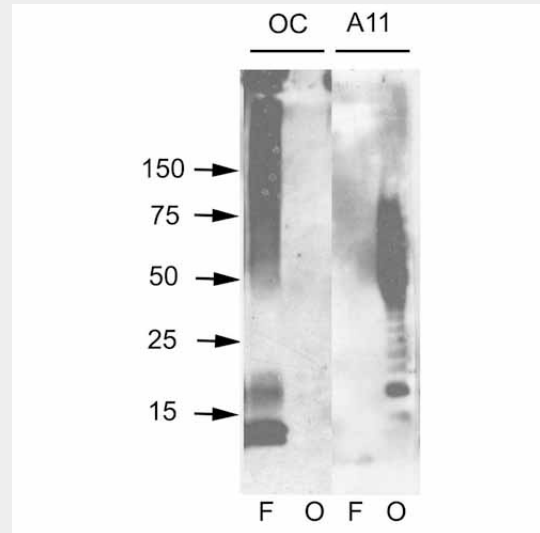
Cellular Localization
Membrane

Amyloid Fibrils (OC) Antibody - Protocols

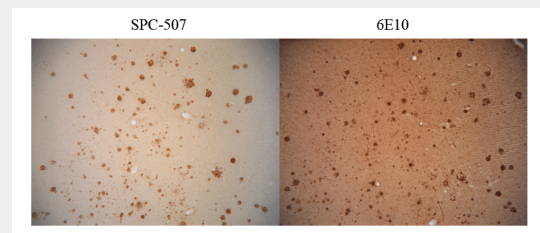
Provided below are standard protocols that you may find useful for product applications.

- [Western Blot](#)
- [Blocking Peptides](#)
- [Dot Blot](#)
- [Immunohistochemistry](#)
- [Immunofluorescence](#)
- [Immunoprecipitation](#)
- [Flow Cytometry](#)
- [Cell Culture](#)

Cotman, C. W., et al. (2003). Common structure of soluble amyloid oligomers implies common mechanism of pathogenesis. *Science* 300, 486-489. doi: 10.1126/science.1079469.

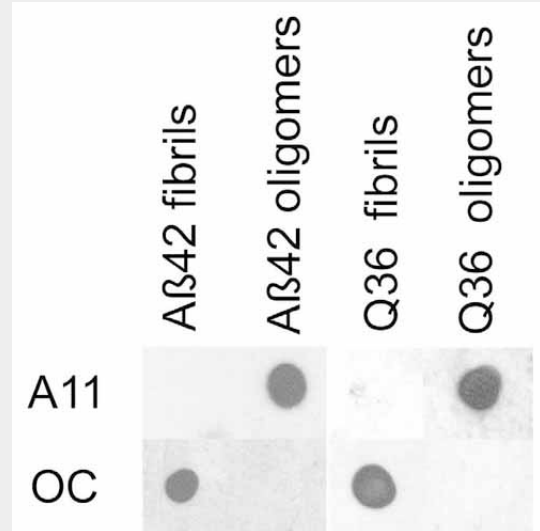


Western blot analysis of Human Abeta42 fibrils and prefibrillar oligomers showing detection of Amyloid Fibrils (OC) protein using Rabbit Anti-Amyloid Fibrils (OC) Polyclonal Antibody (ASM10488). Primary Antibody: Rabbit Anti-Amyloid Fibrils (OC) Polyclonal Antibody (ASM10488) at 1:1000. Courtesy of: Kaye, R., Head, E., Thompson, J. L., McIntire, T. M., Milton, S. C., Cotman, C. W., et al. (2003). Common structure of soluble amyloid oligomers implies common mechanism of pathogenesis. *Science* 300, 486-489. doi: 10.1126/science.1079469.

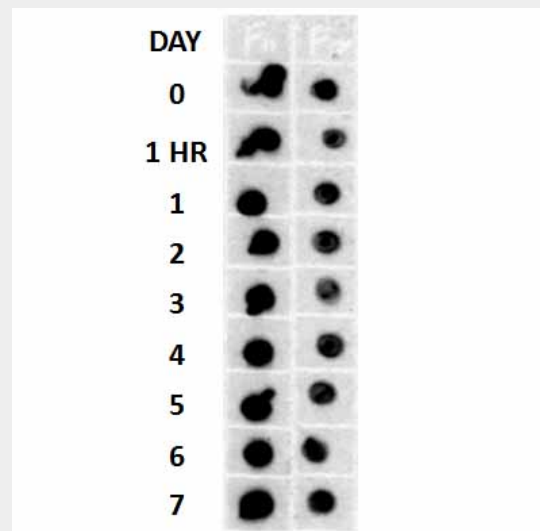


Immunohistochemistry analysis using Rabbit Anti-Amyloid Fibrils (OC) Polyclonal Antibody (ASM10488). Tissue: Alzheimer's Disease brain. Species: Human. Primary Antibody: Rabbit Anti-Amyloid Fibrils (OC) Polyclonal Antibody (ASM10488) at 1:100. Showing no Amyloid Precursor Protein (APP) cross-reactivity (L), but when conducted with monoclonal 6E10 (R) shows considerable APP cross-reactivity. Courtesy of: Kaye, R., Head, E., Thompson, J. L., McIntire, T. M., Milton, S.

C., Cotman, C. W., et al. (2003). Common structure of soluble amyloid oligomers implies common mechanism of pathogenesis. *Science* 300, 486-489. doi: 10.1126/science.1079469.



Dot blot analysis using Rabbit Anti-Amyloid Fibrils (OC) Polyclonal Antibody (ASM10488). Tissue: Abeta42 fibrils and prefibrillar oligomers. Species: Human. Primary Antibody: Rabbit Anti-Amyloid Fibrils (OC) Polyclonal Antibody (ASM10488) at 1:1000. Courtesy of: Kaye, R., Head, E., Thompson, J. L., McIntire, T. M., Milton, S. C., Cotman, C. W., et al. (2003). Common structure of soluble amyloid oligomers implies common mechanism of pathogenesis. *Science* 300, 486-489. doi: 10.1126/science.1079469.



Dot blot analysis using Rabbit Anti-Amyloid Fibrils (OC) Polyclonal Antibody (ASM10488). Tissue: Cell lysates. Species: Human. Primary

Antibody: Rabbit Anti-Amyloid Fibrils (OC) Polyclonal Antibody (ASM10488) at 1:500, 1:5000. Beta Amyloid HEPES-NaCl aggregation, showing 1:500 (L) and 1:5000 (R) time lapse dot blot.

Amyloid Fibrils (OC) Antibody - Background

Amyloid monomeric proteins can sometimes oligomerize into destructive amyloid fibrils. Amyloidogenic conformations of non-disease related proteins can be created by partial protein misfolding or denaturation. Many degenerative diseases are known to be related to the accumulation of misfolded proteins as amyloid fibres (1, 2). These include the amyloid- β peptide plaques and tau neurofibrillary tangles in senile plaques of Alzheimer's symptomology, the deposition of α -synuclein in the Lewy bodies of Parkinson's disease, and accumulation of polyglutamine-containing aggregates in Huntington's disease (2, 3).

Amyloid Fibrils (OC) Antibody - References

1. Glabe C.G. (2004) Trends Biochem Sci. 29(10): 542-547.
2. Kaye R., et al. (2004) J Bio. Chem. 279: 46363-46366.
3. Kaye R., et al. (2003) Science. 300(5618): 486-489.