

TLR4 Antibody
 Catalog # ASM10462

Specification

TLR4 Antibody - Product Information

Application **IHC, WB**
 Primary Accession [O00206](#)
 Other Accession [NP_612564.1](#)
 Host **Rabbit**
 Reactivity **Human, Mouse**
 Clonality **Polyclonal**
 Format **APC**

Description
 Rabbit Anti-Human TLR4 Polyclonal

Target/Specificity
 Detects ~75-80kDa when tested against partial recombinant mouse TLR4 (extra-cellular portion plus His-tag).

Other Names
 ARMD10 Antibody, CD284 Antibody, TLR 4 Antibody, TOLL Antibody, Toll like receptor 4 Antibody

Immunogen
 Developed against a synthetic peptide corresponding to amino acids 420-435 of human TLR4

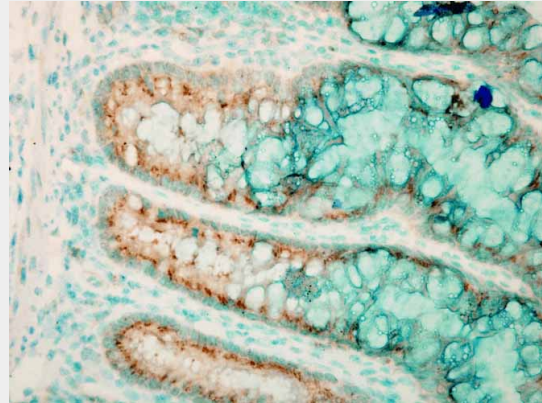
Purification
 Protein A Purified

Storage **-20°C**
Storage Buffer
 PBS, 50% glycerol, 0.09% sodium azide

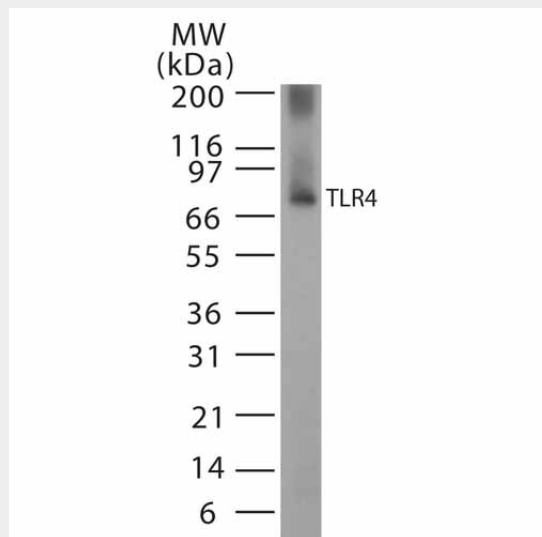
Shipping **Blue Ice or 4°C**
 Temperature

Certificate of Analysis
 2 µg/ml of SPC-200 was sufficient for detection of TLR4 in 100 ng of partial recombinant mouse TLR4 protein by colorimetric immunoblot analysis using Goat anti-rabbit IgG:HRP as the secondary antibody.

Cellular Localization
 Membrane



Immunohistochemistry analysis using Rabbit Anti-TLR4 Polyclonal Antibody (ASM10462). Tissue: colon colitis. Species: Mouse. Fixation: Formalin. Primary Antibody: Rabbit Anti-TLR4 Polyclonal Antibody (ASM10462) at 1:100000 for 12 hours at 4°C. Secondary Antibody: Biotin Goat Anti-Rabbit at 1:2000 for 1 hour at RT. Counterstain: Methyl Green at 200uL for 2 min at RT. Localization: Inflammatory cells.

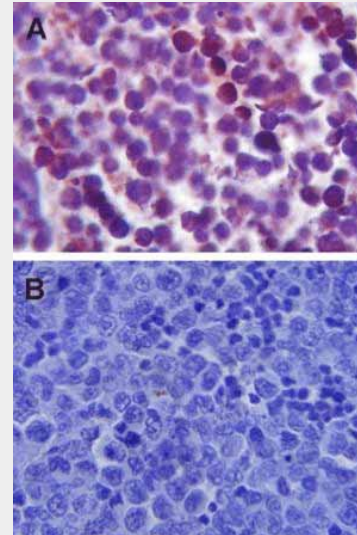


Western blot analysis of Human, Mouse Cell line lysates showing detection of TLR4 protein using Rabbit Anti-TLR4 Polyclonal Antibody (ASM10462). Primary Antibody: Rabbit Anti-TLR4 Polyclonal Antibody (ASM10462) at 1:1000.

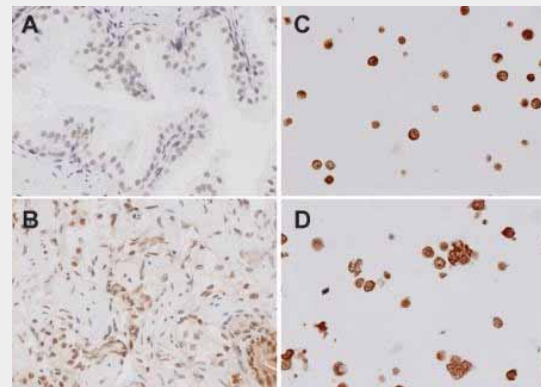
TLR4 Antibody - Protocols

Provided below are standard protocols that you may find useful for product applications.

- [Western Blot](#)
- [Blocking Peptides](#)
- [Dot Blot](#)
- [Immunohistochemistry](#)
- [Immunofluorescence](#)
- [Immunoprecipitation](#)
- [Flow Cytometry](#)
- [Cell Culture](#)



Immunohistochemistry analysis using Rabbit Anti-TLR4 Polyclonal Antibody (ASM10462).
Tissue: Spleen tissue. Species: Mouse.
Primary Antibody: Rabbit Anti-TLR4 Polyclonal Antibody (ASM10462) at 1:100.



Immunohistochemistry analysis using Rabbit Anti-TLR4 Polyclonal Antibody (ASM10462).
Tissue: spleen tissue. Species: Mouse.
Primary Antibody: Rabbit Anti-TLR4 Polyclonal Antibody (ASM10462) at 1:100.

TLR4 Antibody - Background

The Toll-like receptor (TLR) family in mammal comprises a family of trans-membrane proteins characterized by multiple copies of leucine rich repeats in the extracellular domain and 1L-1 receptor motif in the cytoplasmic domain. Like its counterparts in *Drosophila*, TLRs signal through adaptor molecules (1). The TLR family is a phylo-genetically conserved mediator of innate immunity that is essential for microbial recognition (2). Ten human homologs of TLRs (TLR1-10) have been described (3). Amount

this family of receptors, TLR2 and TLR4 have been most studied. These studies have suggested that TLR2 and TLR4 may serve as potential main mediators of LPS signaling (4,5). The mouse TLR4 cDNA codes for a protein consisting of 839 amino acids, with an approximate molecular weight of 90kDa (6).

TLR4 Antibody - References

1. Muzio M., Natoli G., Saccan S., Levrero M., and Mantovani A. (1998) J. Exp. Med. 187: 2097-2101.
2. Medzhitov R. and Janeway C.A (1997) Cell. 91: 295-298.
3. Chuang T.H. and Ulevitch R.J. (2001) Biochim. Biophys. Acta. 1518(1-2): 157-161.
4. Takeuchi O., et al. (1999) Immunity. 11: 443.
5. Poltorak A., Riccardi-Castagnoli P., Citterio S., and Butler B. (2000) Proc. Natl. Acad. Sci USA. 97: 2163-2167.
6. Medzhitov R., Preston-Hurlburt P. and Janeway C.A. (1997) Jr. Nature. 388(6640): 394-397.