

HSP60 (*P. falciparum*) Antibody

Catalog # ASM10446

Specification

HSP60 (*P. falciparum*) Antibody - Product Information

Application **WB**
 Primary Accession [P34940](#)
 Other Accession [XM_001347402.1](#)
 Host **Rabbit**
 Reactivity ***P. falciparum*,
 Bacteria**
 Clonality **Polyclonal**

Description

Rabbit Anti-*P. falciparum* HSP60 (*P. falciparum*) Polyclonal

Target/Specificity

Detects ~ 60kDa. Cross-reacts with *E. coli* HSP60, GroEl.

Other Names

CH60_PLAFG Antibody, Chaperonin CPN60 Antibody, mitochondrial Antibody

Immunogen

Recombinant full length PfHSP60

Purification

Protein A Purified

Storage **-20°C**

Storage Buffer

PBS pH7.4, 50% glycerol, 0.09% sodium azide

Shipping **Blue Ice or 4°C**
 Temperature

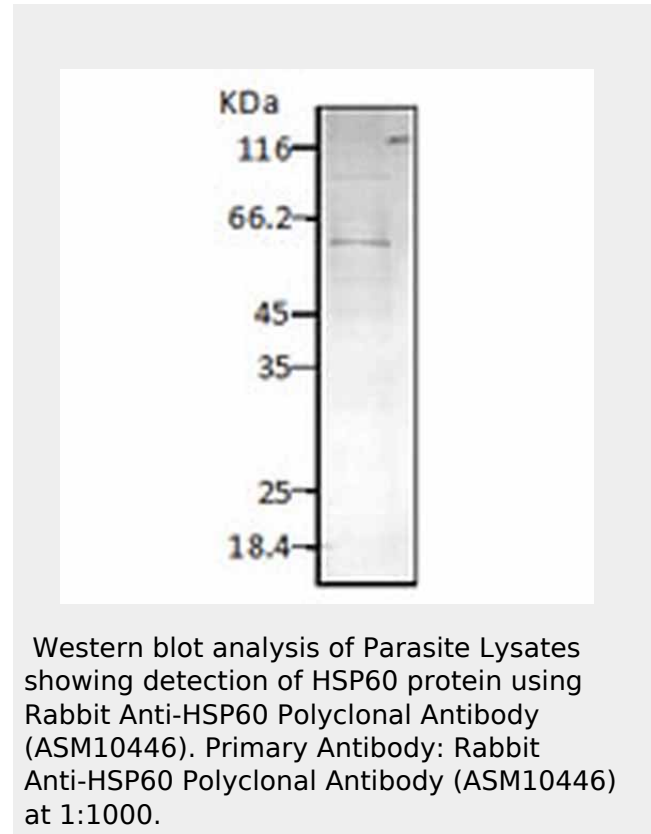
Certificate of Analysis

0.9 µg/ml of SPC-185 was sufficient for detection of PfHSP60 in 20 µg of *P. falciparum* lysate by colorimetric immunoblot analysis using Goat anti-rabbit IgG:HRP as the secondary antibody.

Cellular Localization

Mitochondrion | Mitochondrion Matrix

HSP60 (*P. falciparum*) Antibody - Protocols



HSP60 (*P. falciparum*) Antibody - Background

In both prokaryotic and eukaryotic cells, the misfolding and aggregation of proteins during biogenesis and under conditions of cellular stress are prevented by molecular chaperones. Members of the HSP60 family of heat shock proteins are some of the best characterized chaperones. HSP60, also known as Cpn60 or GroEl, is an abundant protein synthesized constitutively in the cell that is induced to a higher concentration after brief cell shock. It is present in many species and exhibits a remarkable sequence homology among various counterparts in bacteria, plants, and mammals with more than half of the residues identical between bacterial and mammalian HSP60 (1-3). Whereas mammalian HSP60 is localized within the mitochondria, plant HSP60, or otherwise known as Rubisco-binding protein, is located in plant chloroplasts.

Provided below are standard protocols that you may find useful for product applications.

- [Western Blot](#)
- [Blocking Peptides](#)
- [Dot Blot](#)
- [Immunohistochemistry](#)
- [Immunofluorescence](#)
- [Immunoprecipitation](#)
- [Flow Cytometry](#)
- [Cell Culture](#)

It has been indicated that these proteins carry out a very important biological function due to the fact that HSP60 is present in so many different species. The common characteristics of the HSP60s from the divergent species are i) high abundance, ii) induction with environmental stress such as heat shock, iii) homo-oligomeric structures of either 7 or 14 subunits which reversibly dissociate in the presence of Mg²⁺ and ATP, iv) ATPase activity and v) a role in folding and assembly of oligomeric protein structures (4). These similarities are supported by recent studies where the single-ring human mitochondrial homolog, HSP60 with its co-chaperonin, HSP10 were expressed in a *E. coli* strain, engineered so that the *groE* operon is under strict regulatory control. This study has demonstrated that expression of HSP60-HSP10 was able to carry out all essential *in vivo* functions of GroEL and its co-chaperonin, GroES (5). Another important function of HSP60 and HSP10 is their protective functions against infection and cellular stress. HSP60 has however been linked to a number of autoimmune diseases, as well as Alzheimer's, coronary artery diseases, MS, and diabetes (6-9).

HSP60 (*P. falciparum*) Antibody - References

1. Hartl F.U. (1996) *Nature* 381: 571-579.
2. Bukau B., and Horwich A.L. (1998) *Cell* 92: 351-366.
3. Hartl F.U and Hayer-Hartl M. (2002) *Science* 295: 1852-1858.
4. Jindal S., et al. (1989) *Molecular and Cellular Biology* 9: 2279-2283.
5. La Verda D., et al (1999) *Infect Dis. Obstet. Gynecol.* 7: 64-71.
6. Itoh H., et al. (2002) *Eur. J. Biochem.* 269: 5931-5938.
7. Gupta S. and Knowlton A.A. J. *Cell Mol Med.* 9: 51-58.
8. Deocaris C.C., et al. (2006) *Cell Stress Chaperones* 11: 116-128.
9. Lai H.C., et al. (2007) *Am. J. Physiol. Endocrinol. Metab* 292: E292-E297.