

7-Ketocholesterol Antibody
7-Ketocholesterol Antibody, Clone 3F7
Catalog # ASM10341

Specification

7-Ketocholesterol Antibody - Product Information

Application **ICC/IF, WB**
Host **Mouse**
Isotype **IgG3**
Clonality **Monoclonal**

Description

Mouse Anti-7-Ketocholesterol (7-KC)
Monoclonal IgG3

Target/Specificity

Specific for 7-ketocholesterol modified proteins.

Other Names

7-Ketocholesterol [7-KC] Antibody, 7-KC Antibody, 7-ketocholesterol (7-KC) Antibody, 7KC Antibody, 7KC-Modified Keyhole-Limpet Hemocyanine Antibody, 7KC-Modified KLH Antibody

Trademark **MOLECULAR SIGNATURE®**

Immunogen

Synthetic 7-Ketocholesterol conjugated to Keyhole Limpet Hemocyanin (KLH).

Purification

Protein G Purified

Storage **-20°C**

Storage Buffer

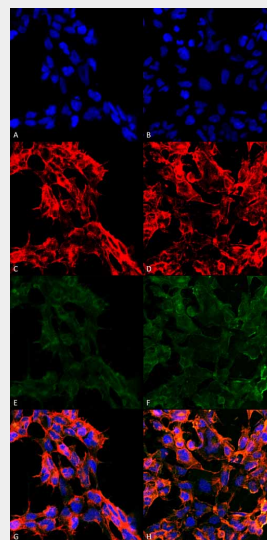
PBS pH 7.4, 50% glycerol, 0.9% Sodium Azide

Shipping **Blue Ice or 4°C**
Temperature

Certificate of Analysis

A 1:1000 dilution of SMC-513 was sufficient for detection of 7-Ketocholesterol in 2 µg of 7-ketocholesterol conjugated to BSA by ECL immunoblot analysis using Goat Anti-Mouse IgG:HRP as the secondary Antibody.

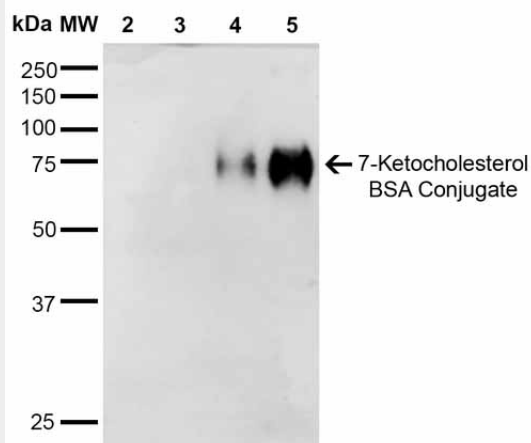
7-Ketocholesterol Antibody - Protocols



Immunocytochemistry/Immunofluorescence analysis using Mouse Anti-7-Ketocholesterol Monoclonal Antibody, Clone 3F7 (ASM10341). Tissue: Embryonic kidney cells (HEK293). Species: Human. Fixation: 5% Formaldehyde for 5 min. Primary Antibody: Mouse Anti-7-Ketocholesterol Monoclonal Antibody (ASM10341) at 1:50 for 30-60 min at RT. Secondary Antibody: Goat Anti-Mouse Alexa Fluor 488 at 1:1500 for 30-60 min at RT. Counterstain: Phalloidin Alexa Fluor 633 F-Actin stain; DAPI (blue) nuclear stain at 1:250, 1:50000 for 30-60 min at RT. Magnification: 20X (2X Zoom). (A,C,E,G) - Untreated. (B,D,F,H) - Cells cultured overnight with 50 µM H₂O₂. (A,B) DAPI (blue) nuclear stain. (C,D) Phalloidin Alex Fluor 633 F-Actin stain. (E,F) 7-Ketocholesterol Antibody. (G,H) Composite. Courtesy of: Dr. Robert Burke, University of Victoria.

Provided below are standard protocols that you may find useful for product applications.

- [Western Blot](#)
- [Blocking Peptides](#)
- [Dot Blot](#)
- [Immunohistochemistry](#)
- [Immunofluorescence](#)
- [Immunoprecipitation](#)
- [Flow Cytometry](#)
- [Cell Culture](#)



Western Blot analysis of 7-Ketocholesterol-BSA Conjugate showing detection of 67 kDa 7-Ketocholesterol-BSA using Mouse Anti-7-Ketocholesterol Monoclonal Antibody, Clone 3F7 (ASM10341). Lane 1: Molecular Weight Ladder (MW). Lane 2: BSA (0.5 µg). Lane 3: BSA (2.0 µg). Lane 4: 7-ketocholesterol-BSA (0.5 µg). Lane 5: 7-ketocholesterol-BSA (2.0 µg). Block: 5% Skim Milk in TBST. Primary Antibody: Mouse Anti-7-Ketocholesterol Monoclonal Antibody (ASM10341) at 1:1000 for 2 hours at RT. Secondary Antibody: Goat Anti-Mouse IgG: HRP at 1:2000 for 60 min at RT. Color Development: ECL solution for 5 min in RT. Predicted/Observed Size: 67 kDa.