

**Hexanoyl-Lysine adduct Antibody**  
Hexanoyl-Lysine adduct Antibody, Clone 5D9  
Catalog # ASM10336

**Specification**

**Hexanoyl-Lysine adduct Antibody - Product Information**

Application **ICC/IF, WB, FC**  
Host **Mouse**  
Isotype **IgG1**  
Clonality **Monoclonal**

**Description**

Mouse Anti-Hexanoyl-Lysine adduct (HEL)  
Monoclonal IgG1

**Target/Specificity**

Specific for Hexanoyl-Lysine adduct (HEL) modified peptides and proteins. Does not detect free Hexanoyl-Lysine. Does not cross-react with Acrolein, Crotonaldehyde, 4-Hydroxy-2-hexenal, 4-Hydroxy nonenal, Malondialdehyde, or Methylglyoxal modified proteins.

**Other Names**

Hexanoyl-Lysine adduct Antibody, HEL (Hexanoyl-Lysine adduct) Antibody, HEL Antibody, HEL Adduct Antibody, Hexanoyl-Lys adduct Antibody, Hexanoyl-Lys Antibody, Hexanoyl-Lysine (HEL) adduct Antibody, Hexanoyl-Lys (HEL) Antibody, Hexanoyl Lysine adduct Antibody, Hexanoyl-Lysine adduct-modified protein Antibody, Hexanoyl-Lysine Adduct (HEL) Antibody

Trademark **MOLECULAR SIGNATURE®**

**Immunogen**

Synthetic Hexanoyl modified Keyhole Limpet Hemocyanin (KLH).

**Purification**

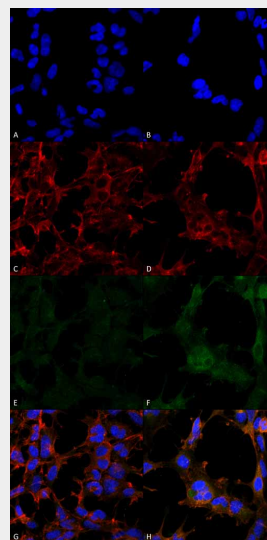
Protein G Purified

Storage **-20°C**

**Storage Buffer**

PBS pH 7.4, 50% glycerol, 0.9% Sodium Azide

Shipping **Blue Ice or 4°C**  
Temperature



Immunocytochemistry/Immunofluorescence analysis using Mouse Anti-Hexanoyl-Lysine adduct Monoclonal Antibody, Clone 5D9 (ASM10336). Tissue: Embryonic kidney cells (HEK293). Species: Human. Fixation: 5% Formaldehyde for 5 min. Primary Antibody: Mouse Anti-Hexanoyl-Lysine adduct Monoclonal Antibody (ASM10336) at 1:50 for 30-60 min at RT. Secondary Antibody: Goat Anti-Mouse Alexa Fluor 488 at 1:1500 for 30-60 min at RT. Counterstain: Phalloidin Alexa Fluor 633 F-Actin stain; DAPI (blue) nuclear stain at 1:250, 1:50000 for 30-60 min at RT. Magnification: 20X (2X Zoom). (A,C,E,G) - Untreated. (B,D,F,H) - Cells cultured overnight with 50  $\mu$ M H<sub>2</sub>O<sub>2</sub>. (A,B) DAPI (blue) nuclear stain. (C,D) Phalloidin Alex Fluor 633 F-Actin stain. (E,F) Hexanoyl-Lysine adduct Antibody. (G,H) Composite. Courtesy of: Dr. Robert Burke, University of Victoria.

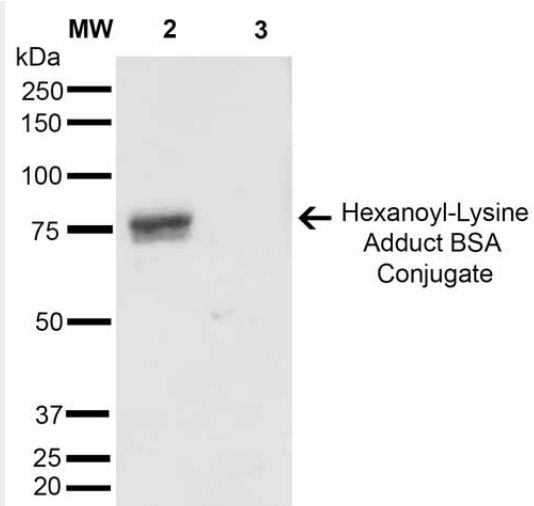
### Certificate of Analysis

A 1:1000 dilution of SMC-508 was sufficient for detection of Hexanoyl Lysine adduct in 0.5 µg of Hexanoyl Lysine conjugated to BSA by ECL immunoblot analysis using Goat Anti-Mouse IgG:HRP as the secondary Antibody.

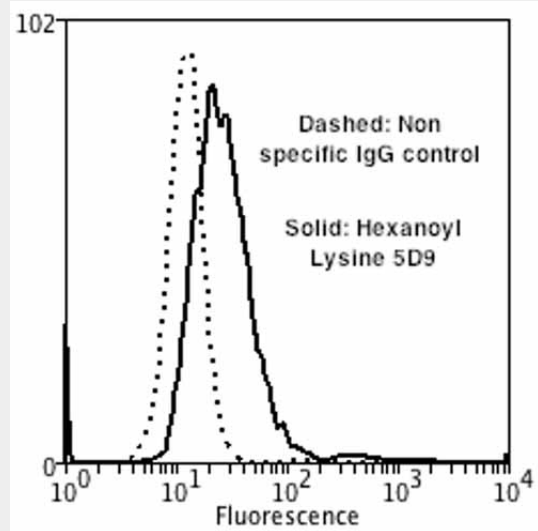
### Hexanoyl-Lysine adduct Antibody - Protocols

Provided below are standard protocols that you may find useful for product applications.

- [Western Blot](#)
- [Blocking Peptides](#)
- [Dot Blot](#)
- [Immunohistochemistry](#)
- [Immunofluorescence](#)
- [Immunoprecipitation](#)
- [Flow Cytometry](#)
- [Cell Culture](#)

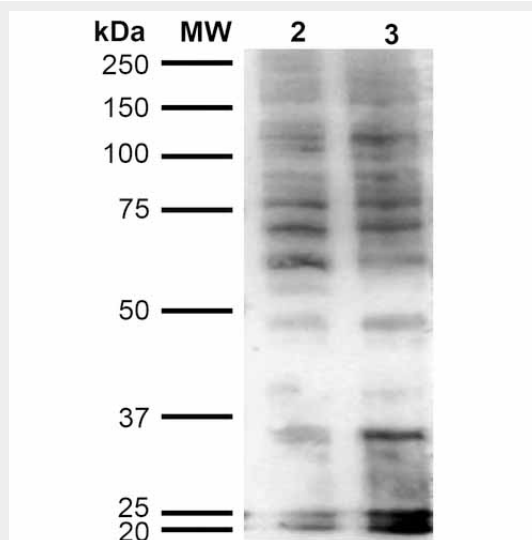


Western Blot analysis of Hexanoyl Lysine-BSA Conjugate showing detection of 67 kDa Hexanoyl-Lysine adduct-BSA using Mouse Anti-Hexanoyl-Lysine adduct Monoclonal Antibody, Clone 5D9 (ASM10336). Lane 1: Molecular Weight Ladder (MW). Lane 2: Hexanoyl Lysine-BSA. Lane 3: BSA. Load: 0.5 µg. Block: 5% Skim Milk in TBST. Primary Antibody: Mouse Anti-Hexanoyl-Lysine adduct Monoclonal Antibody (ASM10336) at 1:1000 for 2 hours at RT. Secondary Antibody: Goat Anti-Mouse IgG: HRP at 1:2000 for 60 min at RT. Color Development: ECL solution for 5 min in RT. Predicted/Observed Size: 67 kDa.



Flow Cytometry analysis using Mouse Anti-Hexanoyl-Lysine adduct Monoclonal Antibody, Clone 5D9 (ASM10336). Tissue: Neuroblastoma cells (SH-SY5Y). Species: Human. Fixation: 90% Methanol. Primary Antibody: Mouse Anti-Hexanoyl-Lysine adduct Monoclonal Antibody (ASM10336) at 1:50 for

30 min on ice. Secondary Antibody: Goat Anti-Mouse: PE at 1:100 for 20 min at RT. Cells were subject to oxidative stress by treating with 250  $\mu$ M H<sub>2</sub>O<sub>2</sub> for 24 hours.



Western Blot analysis of Human Cervical Cancer cell line (HeLa) showing detection of Hexanoyl-Lysine adduct-BSA using Mouse Anti-Hexanoyl-Lysine adduct Monoclonal Antibody, Clone 5D9 (ASM10336). Lane 1: Molecular Weight Ladder (MW). Lane 2: HeLa cell lysate. Lane 3: H<sub>2</sub>O<sub>2</sub> treated HeLa cell lysate. Load: 12  $\mu$ g. Block: 5% Skim Milk in TBST. Primary Antibody: Mouse Anti-Hexanoyl-Lysine adduct Monoclonal Antibody (ASM10336) at 1:1000 for 2 hours at RT. Secondary Antibody: Goat Anti-Mouse IgG: HRP at 1:2000 for 60 min at RT. Color Development: ECL solution for 5 min in RT.