

GABA-A Receptor Alpha 2 Antibody
GABA-A Receptor Alpha 2 Antibody, Clone S399-19
Catalog # ASM10318

Specification

GABA-A Receptor Alpha 2 Antibody - Product Information

Application **ICC/IF, WB**
Primary Accession [P23576](#)
Other Accession [NP_001129251.1](#)
Host **Mouse**
Isotype **IgG1**
Reactivity **Human, Mouse, Rat**
Clonality **Monoclonal**
Format **RPE**

Description

Mouse Anti-Rat GABA-A Receptor Alpha2
Monoclonal IgG1

Target/Specificity

Detects ~55kDa. Does not cross-react with GABA-A Receptor Alpha1.

Other Names

GABA A receptor subunit alpha 2 Antibody,
GABRA2 Antibody, Gamma aminobutyric acid A receptor Alpha 2 Antibody,
GBRA2_Human Antibody

Immunogen

Fusion protein amino acids 350-385 (Cytoplasmic C-terminus) of rat GABA-A Receptor Alpha2

Purification

Protein G Purified

Storage **-20°C**

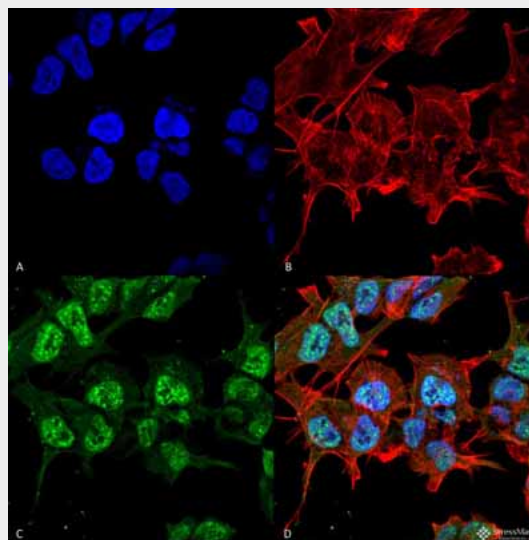
Storage Buffer

PBS pH7.4, 50% glycerol, 0.1% sodium azide

Shipping **Blue Ice or 4°C**
Temperature

Certificate of Analysis

A 1:100 dilution of SMC-486 was sufficient for detection of GABA-A R, Alpha2 in 20 µg of mouse brain lysate by ECL immunoblot analysis using Goat anti-mouse IgG:HRP as the secondary antibody.



Immunocytochemistry/Immunofluorescence analysis using Mouse Anti-GABA-A Receptor Alpha2 Monoclonal Antibody, Clone S399-19 (ASM10318). Tissue: Neuroblastoma cell line (SK-N-BE). Species: Human. Fixation: 4% Formaldehyde for 15 min at RT. Primary Antibody: Mouse Anti-GABA-A Receptor Alpha2 Monoclonal Antibody (ASM10318) at 1:100 for 60 min at RT. Secondary Antibody: Goat Anti-Mouse ATTO 488 at 1:100 for 60 min at RT. Counterstain: Phalloidin Texas Red F-Actin stain; DAPI (blue) nuclear stain at 1:1000; 1:5000 for 60 min RT, 5 min RT. Localization: Cytoplasm, Nucleus. Magnification: 60X. (A) DAPI (blue) nuclear stain (B) Phalloidin Texas Red F-Actin stain (C) GABA-A Receptor Alpha2 Antibody (D) Composite.

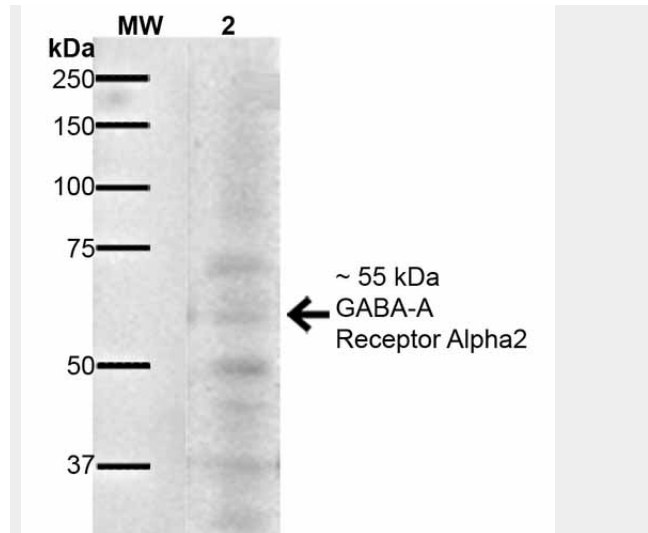
Cellular Localization

Cytoplasm

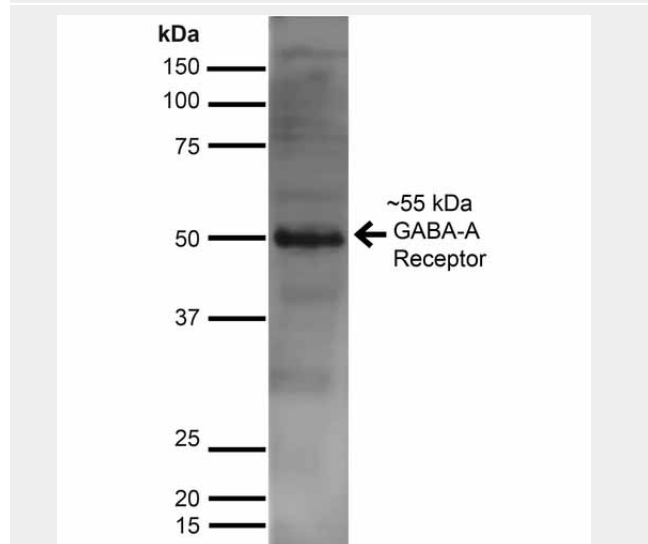
GABA-A Receptor Alpha 2 Antibody - Protocols

Provided below are standard protocols that you may find useful for product applications.

- [Western Blot](#)
- [Blocking Peptides](#)
- [Dot Blot](#)
- [Immunohistochemistry](#)
- [Immunofluorescence](#)
- [Immunoprecipitation](#)
- [Flow Cytometry](#)
- [Cell Culture](#)



Western Blot analysis of Mouse Brain showing detection of ~55 kDa GABA A Receptor Alpha 2 protein using Mouse Anti-GABA A Receptor Alpha 2 Monoclonal Antibody, Clone S399-19 (ASM10318). Lane 1: MW Ladder. Lane 2: Mouse Brain. Load: 20 µg. Primary Antibody: Mouse Anti-GABA A Receptor Alpha 2 Monoclonal Antibody (ASM10318) at 1:1000 for 16 hours at 4°C. Secondary Antibody: Goat Anti-Mouse IgG: HRP at 1:200 for 1 hour at RT. Predicted/Observed Size: ~55 kDa. Other Band(s): ~ 37 kDa, ~50 kDa, ~70 kDa.



Western Blot analysis of Rat Brain showing detection of ~55 kDa GABA A Receptor Alpha 2 protein using Mouse Anti-GABA A Receptor Alpha 2 Monoclonal Antibody, Clone S399-19 (ASM10318). Lane 1: MW Ladder. Lane 2: Rat Brain. Load: 10 µg. Block: 5% Skim Milk for 1 hour at RT. Primary Antibody: Mouse Anti-GABA A Receptor Alpha 2 Monoclonal

Antibody (ASM10318) at 1:1000 for 1 hour at RT. Secondary Antibody: Goat Anti-Mouse IgG: HRP at 1:100 for 1 hour at RT. Color Development: ECL solution for 6 min at RT. Predicted/Observed Size: ~55 kDa.

GABA-A Receptor Alpha 2 Antibody - Background

The GABA-A receptor is a member of the superfamily of fast acting ligand-gated ion channels. The individual subunits of these receptors have similar sequences and structural features (1). GABA-A receptors are the major fast inhibitory neurotransmitter gated ion channels in the brain (2).

GABA-A Receptor Alpha 2 Antibody - References

1. Bracamontes J.R. and Steinbach J.H. (2008) J Bio Chem. 283: 26128-26136.
2. Macdonald R.L., Olsen R.W. (1993) Annu Rev Neurosci. 17: 569-602.