

**Ataxin 1 Antibody**  
**Ataxin 1 Antibody, Clone S76-8**  
**Catalog # ASM10289**

**Specification**

**Ataxin 1 Antibody - Product Information**

Application **ICC/IF, WB**  
Primary Accession [P54254](#)  
Other Accession [NP\\_001186233.1](#)  
Host **Mouse**  
Isotype **IgG2b**  
Reactivity **Human, Mouse, Rat**  
Clonality **Monoclonal**

**Description**  
Mouse Anti-Mouse Ataxin 1 Monoclonal IgG2b

**Target/Specificity**  
Detects ~85kDa.

**Other Names**

Ataxin-1 Antibody, ATX1 Antibody, Atxn1 Antibody, D6S504E Antibody, OTTHUMP00000016065 Antibody, SCA1 Antibody, Spinocerebellar ataxia type 1 protein Antibody

**Immunogen**

Synthetic peptide amino acids 164-197 (ATT PSQRSQLEAYSTLLANMGSLSQAPGHKVEPP) of mouse Ataxin-1. Rat: 100% identity (34/34 amino acids identical). Human: 88% identity (30/34 amino acids identical).

**Purification**

Protein G Purified

Storage **-20°C**

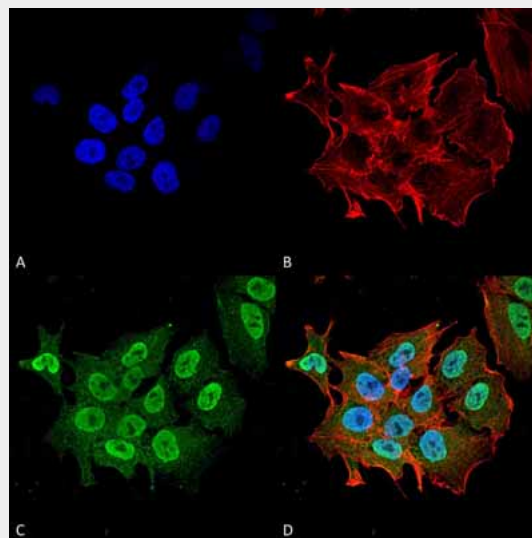
**Storage Buffer**

PBS pH 7.4, 50% glycerol, 0.1% sodium azide

Shipping **Blue Ice or 4°C**  
Temperature

**Certificate of Analysis**

1 µg/ml of SMC-455 was sufficient for detection of Ataxin-1 in 20 µg of rat brain lysate by colorimetric immunoblot analysis using Goat anti-mouse IgG:HRP as the secondary antibody.



Immunocytochemistry/Immunofluorescence analysis using Mouse Anti-Ataxin 1 Monoclonal Antibody, Clone S76-8 (ASM10289). Tissue: Neuroblastoma cell line (SK-N-BE). Species: Human. Fixation: 4% Formaldehyde for 15 min at RT. Primary Antibody: Mouse Anti-Ataxin 1 Monoclonal Antibody (ASM10289) at 1:100 for 60 min at RT. Secondary Antibody: Goat Anti-Mouse ATTO 488 at 1:200 for 60 min at RT. Counterstain: Phalloidin Texas Red F-Actin stain; DAPI (blue) nuclear stain at 1:1000, 1:5000 for 60 min at RT, 5 min at RT. Localization: Cytoplasm, Nucleus. Magnification: 60X.

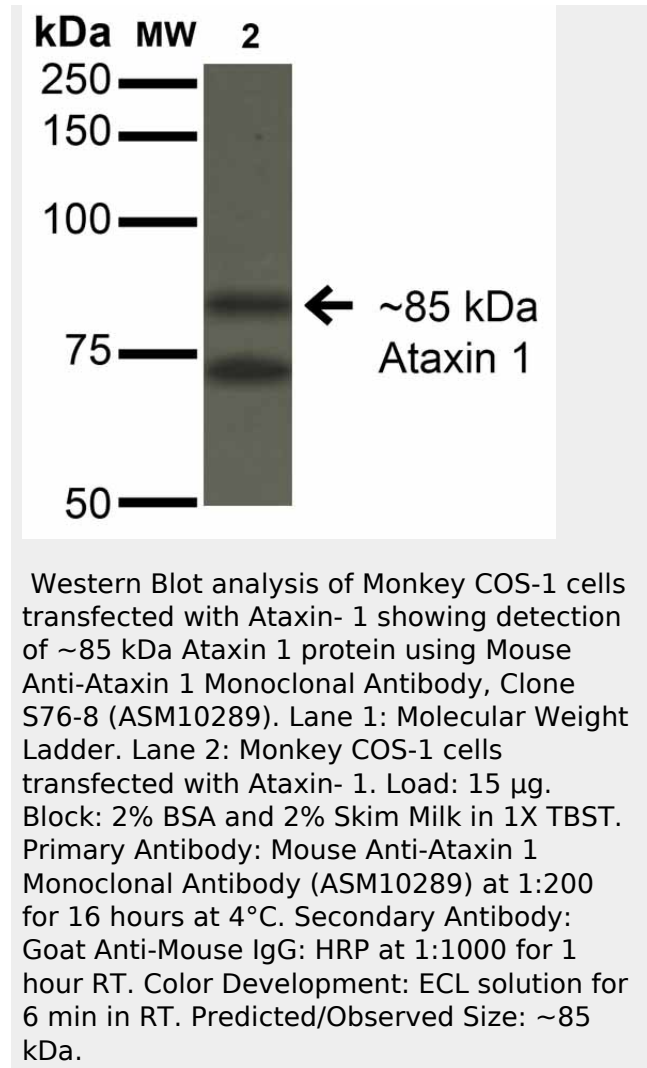
## Cellular Localization

Cytoplasm | Nucleus

## Ataxin 1 Antibody - Protocols

Provided below are standard protocols that you may find useful for product applications.

- [Western Blot](#)
- [Blocking Peptides](#)
- [Dot Blot](#)
- [Immunohistochemistry](#)
- [Immunofluorescence](#)
- [Immunoprecipitation](#)
- [Flow Cytometry](#)
- [Cell Culture](#)



## Ataxin 1 Antibody - Background

Ataxin-1 is a member of the ATXN1 protein family and contains a single AXH domain. It is a neurodegenerative disorder protein thought to have a role in the metabolism of RNA as it has been shown to localize to the RNA and transcription dependent inclusions within the nucleus. A mutation of Ataxin-1 is the cause of spinocerebellar ataxia type-1 (SCA1), a progressive, neurodegenerative disease that is autosomal dominant and primarily affects the Purkinje cells found in brain stem neuronal populations and the cerebellum. Expression of Ataxin-1 is almost ubiquitous, except in the brain where it is isolated to populations of neurons.