

LRRK2/Dardarin Antibody
LRRK2/Dardarin Antibody, Clone S231B-34
Catalog # ASM10279

Specification

LRRK2/Dardarin Antibody - Product Information

Application **ICC/IF, WB**
 Primary Accession [Q5S007](#)
 Other Accession [NP_940980](#)
 Host **Mouse**
 Isotype **IgG2a**
 Reactivity **Human, Rat**
 Clonality **Monoclonal**

Description

Mouse Anti-Human LRRK2/Dardarin
 Monoclonal IgG2a

Target/Specificity

Detects >200kDa.

Other Names

Leucine-rich repeat kinase 2 Antibody, RIP7
 Antibody, PARK8 Antibody, Dardarin
 Antibody, ROCO 2 Antibody, RIPK7
 Antibody, Leucine-rich repeat
 serine/threonine-protein kinase 2 Antibody,
 augmented in rheumatoid arthritis 17
 Antibody

Immunogen

Fusion protein amino acids 841-960 of
 human LRRK2. 81% identical in mouse, 80%
 identical in rat. <30% identity with LRRK1.

Purification

Protein G Purified

Storage **-20°C**

Storage Buffer

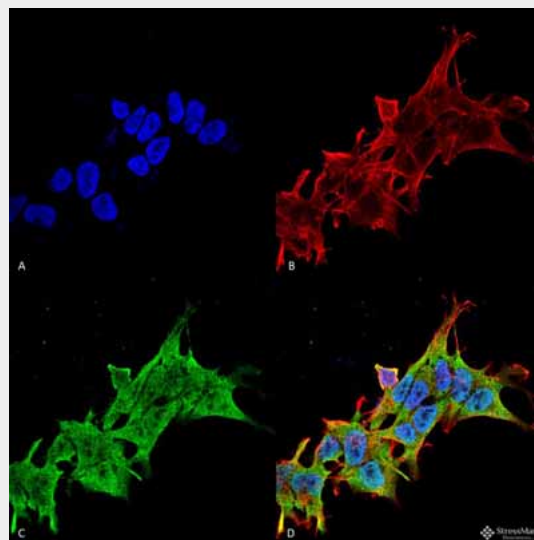
PBS pH 7.4, 50% glycerol, 0.1% sodium
 azide

Shipping **Blue Ice or 4°C**
 Temperature

Certificate of Analysis

10 µg/ml of SMC-445 was sufficient for
 detection of LRRK2/Dardarin in 20 µg of rat
 brain lysate by colorimetric immunoblot
 analysis using Goat anti-mouse IgG:HRP as
 the secondary antibody.

Cellular Localization



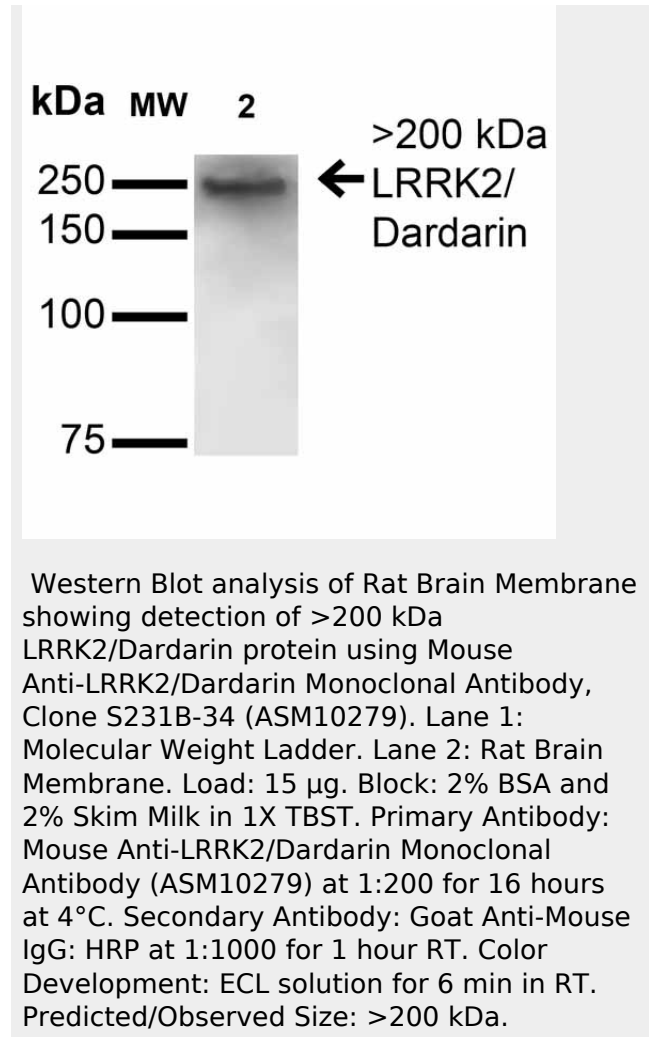
Immunocytochemistry/Immunofluorescence
 analysis using Mouse Anti-LRRK2/Dardarin
 Monoclonal Antibody, Clone S231B-34
 (ASM10279). Tissue: Neuroblastoma cell line
 (SK-N-BE). Species: Human. Fixation: 4%
 Formaldehyde for 15 min at RT. Primary
 Antibody: Mouse Anti-LRRK2/Dardarin
 Monoclonal Antibody (ASM10279) at 1:100
 for 60 min at RT. Secondary Antibody: Goat
 Anti-Mouse ATTO 488 at 1:100 for 60 min at
 RT. Counterstain: Phalloidin Texas Red
 F-Actin stain; DAPI (blue) nuclear stain at
 1:1000, 1:5000 for 60min RT, 5min RT.
 Localization: Cytoplasm . Magnification: 60X.
 (A) DAPI (blue) nuclear stain (B) Phalloidin
 Texas Red F-Actin stain (C) LRRK2/Dardarin
 Antibody (D) Composite.

Cytoplasm | Membrane | Mitochondrion |
Golgi Apparatus | Cell Projection | Axon |
Dendrite | Endoplasmic Reticulum |
Cytoplasmic Vesicle | Endosome | Lysosome

LRRK2/Dardarin Antibody - Protocols

Provided below are standard protocols that you may find useful for product applications.

- [Western Blot](#)
- [Blocking Peptides](#)
- [Dot Blot](#)
- [Immunohistochemistry](#)
- [Immunofluorescence](#)
- [Immunoprecipitation](#)
- [Flow Cytometry](#)
- [Cell Culture](#)



LRRK2/Dardarin Antibody - Background

LRRK2 is a large protein with multiple domains including several ankyrin, leucine-rich, and WD40 repeats, a Ras-like small GTPase family domain named Roc, and a kinase domain that is closely related to the RIP kinase domain. LRRK2 gene is expressed in brain as well as in other tissues such as lung, liver and heart. LRRK2 might be central to the pathogenesis of several major neurodegenerative diseases associated with parkinsonism. Several dominantly inherited missense mutations in the gene encoding LRRK2 have been identified in several families that exhibit a broad spectrum of neuropathological features.