

ASIC1 Antibody
ASIC1 Antibody, Clone S271-44
Catalog # ASM10261

Specification

ASIC1 Antibody - Product Information

Application **ICC/IF, WB**
 Primary Accession [O6NXX8](#)
 Other Accession [NP_033727.1](#)
 Host **Mouse**
 Isotype **IgG1**
 Reactivity **Mouse, Rat**
 Clonality **Monoclonal**

Description

Mouse Anti-Mouse ASIC1 Monoclonal IgG1

Target/Specificity

Detects ~60kDa.

Other Names

ACCN2 Antibody, Acid-sensing (proton-gated) ion channel Antibody, Acid-sensing ion channel 1 Antibody, Amiloride-sensitive cation channel 2 neuronal Antibody, BNAC2 Antibody, Brain sodium channel 2 Antibody

Immunogen

Fusion protein amino acids 460-526 (Cytoplasmic C-terminus) of mouse ASIC1

Purification

Protein G Purified

Storage **-20°C**

Storage Buffer

PBS pH7.4, 50% glycerol, 0.09% sodium azide

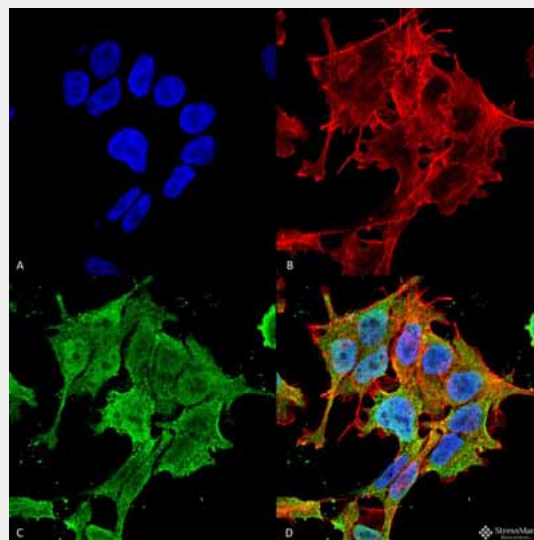
Shipping **Blue Ice or 4°C**
 Temperature

Certificate of Analysis

1 µg/ml of SMC-427 was sufficient for detection of ASIC1 in 20 µg of rat brain lysate by colorimetric immunoblot analysis using Goat anti-mouse IgG:HRP as the secondary antibody.

Cellular Localization

Cell Membrane

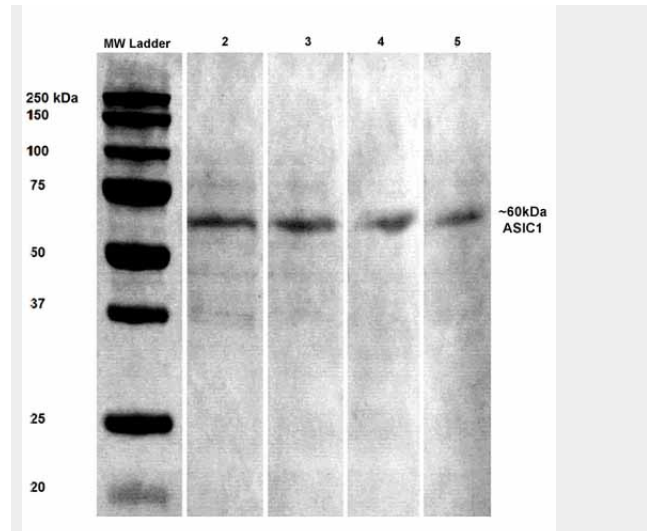


Immunocytochemistry/Immunofluorescence analysis using Mouse Anti-ASIC1 Monoclonal Antibody, Clone S271-44 (ASM10261). Tissue: Neuroblastoma cell line (SK-N-BE). Species: Human. Fixation: 4% Formaldehyde for 15 min at RT. Primary Antibody: Mouse Anti-ASIC1 Monoclonal Antibody (ASM10261) at 1:100 for 60 min at RT. Secondary Antibody: Goat Anti-Mouse ATTO 488 at 1:100 for 60 min at RT. Counterstain: Phalloidin Texas Red F-Actin stain; DAPI (blue) nuclear stain at 1:1000, 1:5000 for 60min RT, 5min RT. Localization: Cell Membrane, Nucleus. Magnification: 60X. (A) DAPI (blue) nuclear stain (B) Phalloidin Texas Red F-Actin stain (C) ASIC1 Antibody (D) Composite.

ASIC1 Antibody - Protocols

Provided below are standard protocols that you may find useful for product applications.

- [Western Blot](#)
- [Blocking Peptides](#)
- [Dot Blot](#)
- [Immunohistochemistry](#)
- [Immunofluorescence](#)
- [Immunoprecipitation](#)
- [Flow Cytometry](#)
- [Cell Culture](#)



Western Blot analysis of Rat brain lysates showing detection of ASIC1 protein using Mouse Anti-ASIC1 Monoclonal Antibody, Clone S271-44 (ASM10261). Primary Antibody: Mouse Anti-ASIC1 Monoclonal Antibody (ASM10261) at 1:100, 1:250, 1:500, and 1:1000.

ASIC1 Antibody - Background

Acid sensing ion channel ASIC1, also designated ACCN2, BNAC2 and ASIC1a, is present in brain as a 4.3-kb transcript with localization to rat dorsal root ganglia. In situ hybridization of rat brain suggests that ASIC1 is most abundant in the main olfactory bulb, cerebral cortex, hippocampal formation, habenula, basolateral amygdaloid nuclei and cerebellum. ASIC1 and H⁺-gated currents may contribute to the development of fear and anxiety.

ASIC1 Antibody - References

1. Garcia-Anoveros J., Derfler B., Neville-Golden J., Hyman B.T. and Corey D.P. (1997) Proc. Natl. Acad. Sci. USA 94: 1459-1464.
2. Waldmann R., Champigny G., Bassilana F., Heurteaux C. and Lazdunski M. (1997) Nature. 386: 173-177.
3. Grunder S., Geisler H.S., Rainier S. and Fink J.K. (2001) Eur. J. Hum. Genet. 9:672-676.
4. Chen C.C., Zimmer A., Sun W.H., Hall J., Brownstein M.J. and Zimmer A. (2002) Proc. Natl. Acad. Sci. USA 99: 8992-8997.
5. Wemmie J.A., et al. (2004) Proc. Natl. Acad. Sci. USA 101: 1177-1182.

Sci. USA 101: 3621-3626 .