

GluN2B/NR2B Antibody
GluN2B/NR2B Antibody, Clone S59-20
Catalog # ASM10209

Specification

GluN2B/NR2B Antibody - Product Information

Application **IHC, WB**
Primary Accession [Q00960](#)
Other Accession [NP_036706.1](#)
Host **Mouse**
Isotype **IgG2a**
Reactivity **Human, Mouse, Rat**
Clonality **Monoclonal**

Description

Mouse Anti-Rat GluN2B/NR2B Monoclonal IgG2a

Target/Specificity

Detects ~166kDa. No cross-reactivity against NR2A.

Other Names

NMDAR2B Antibody, hNR3 Antibody, MGC142180 Antibody, glutamate receptor subunit epsilon-2 Antibody, NR3 Antibody, GluN2B Antibody, hNR3 Antibody, MRD6 Antibody, NMDAR2B Antibody, NR2B Antibody

Immunogen

Fusion protein amino acids 20-271 (N-terminus) of rat NR2B

Purification

Protein G Purified

Storage **-20°C**

Storage Buffer

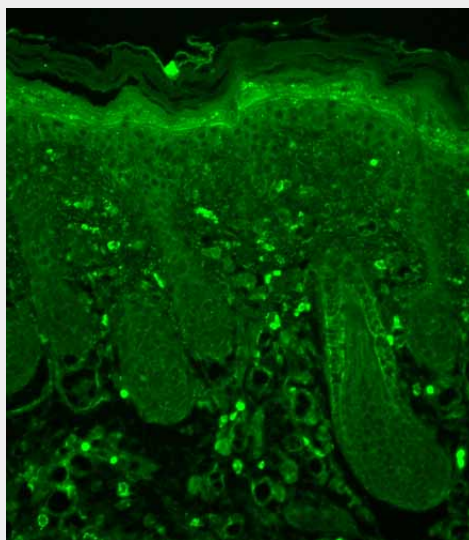
PBS pH7.4, 50% glycerol, 0.09% sodium azide

Shipping **Blue Ice or 4°C**
Temperature

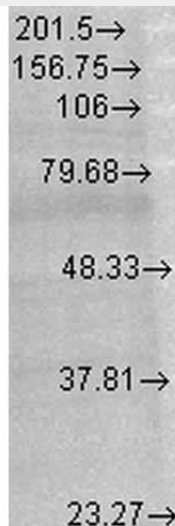
Certificate of Analysis

1 µg/ml of SMC-333 was sufficient for detection of NR2B/GluN2B in 10 µg of rat brain lysate by colorimetric immunoblot analysis using goat anti-mouse IgG:HRP as the secondary antibody.

Cellular Localization



Immunohistochemistry analysis using Mouse Anti-GluN2B/NR2B Monoclonal Antibody, Clone S59-20 (ASM10209). Tissue: backskin. Species: Mouse. Fixation: Bouin's Fixative and paraffin-embedded. Primary Antibody: Mouse Anti-GluN2B/NR2B Monoclonal Antibody (ASM10209) at 1:100 for 1 hour at RT. Secondary Antibody: FITC Goat Anti-Mouse (green) at 1:50 for 1 hour at RT. Localization: Positive (dull) suprabasal staining in the epidermis and some hair follicle localization.



201.5→
156.75→
106→
79.68→
48.33→
37.81→
23.27→

Cell Membrane | Cell Junction | Synapse |
Postsynaptic Cell Membrane

GluN2B/NR2B Antibody - Protocols

Provided below are standard protocols that you may find useful for product applications.

- [Western Blot](#)
- [Blocking Peptides](#)
- [Dot Blot](#)
- [Immunohistochemistry](#)
- [Immunofluorescence](#)
- [Immunoprecipitation](#)
- [Flow Cytometry](#)
- [Cell Culture](#)

Western Blot analysis of Rat brain membrane lysate showing detection of GluN2B/NR2B protein using Mouse Anti-GluN2B/NR2B Monoclonal Antibody, Clone S59-20 (ASM10209). Load: 15 µg. Block: 1.5% BSA for 30 minutes at RT. Primary Antibody: Mouse Anti-GluN2B/NR2B Monoclonal Antibody (ASM10209) at 1:1000 for 2 hours at RT. Secondary Antibody: Sheep Anti-Mouse IgG: HRP for 1 hour at RT.

GluN2B/NR2B Antibody - Background

NR2B/GluN2B containing receptors have been implicated in synaptic plasticity, memory formation and pain modulation (1). Studies suggest that the NR2B subunit of glutamate receptors may be potential targets for relieving pain; NR2B may be a probable target for anti-nociceptive drugs, and may also be useful as analgesics (2).

GluN2B/NR2B Antibody - References

1. Zhuo M. (2009) Mol Brain. 2(1): 4
2. Gurwitz D, and Weizman A. (2002) Drug Discovery Today, 7(7): 403-406.