

PP5 Antibody

PP5 Antibody, Clone 2E11

Catalog # ASM10167

Specification

PP5 Antibody - Product Information

Application **ICC/IF, WB**
Primary Accession [P53041](#)
Other Accession [NP_006238.1](#)
Host **Mouse**
Isotype **IgG2a**
Reactivity **Human**
Clonality **Monoclonal**

Description

Mouse Anti-Human PP5 Monoclonal IgG2a

Target/Specificity

Detects ~58kDa.

Other Names

PPP5 Antibody, PPT Antibody, Protein phosphatase T Antibody, Serine/threonine protein phosphatase 5 Antibody

Immunogen

Full length human PP5 protein

Purification

Protein G Purified

Storage **-20°C**

Storage Buffer

PBS pH7.4, 50% glycerol, 0.09% sodium azide

Shipping **Blue Ice or 4°C**
Temperature

Certificate of Analysis

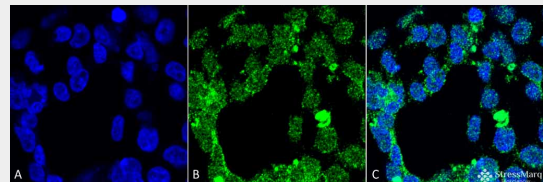
1 µg/ml of SMC-243 was sufficient for detection of PP5 in 15 µg of human A431 lysates by ECL analysis using Goat anti-mouse IgG:HRP as the secondary antibody.

Cellular Localization

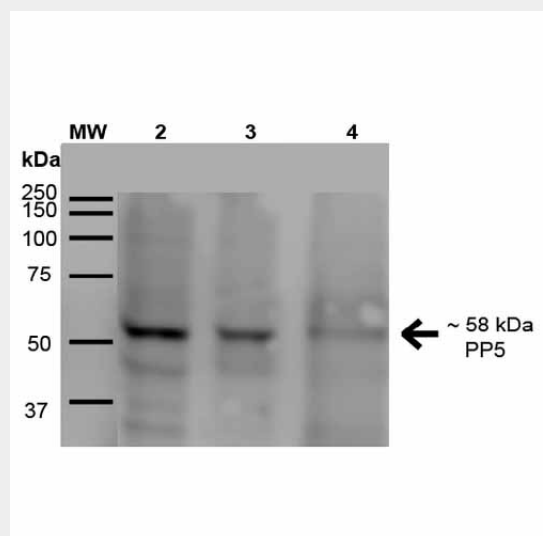
Nucleus | Cytoplasm

PP5 Antibody - Protocols

Provided below are standard protocols that you



Immunocytochemistry/Immunofluorescence analysis using Mouse Anti-PP5 Monoclonal Antibody, Clone 2E11 (ASM10167). Tissue: HEK293. Species: Human. Fixation: 2% Formaldehyde for 20 min at RT. Primary Antibody: Mouse Anti-PP5 Monoclonal Antibody (ASM10167) at 1:50 for 1 hour at RT. Secondary Antibody: Alexa Fluor 488 Goat Anti-Mouse (green) at 1:100 for 1 hour at RT. Counterstain: DAPI (blue) nuclear stain. Magnification: 63x.

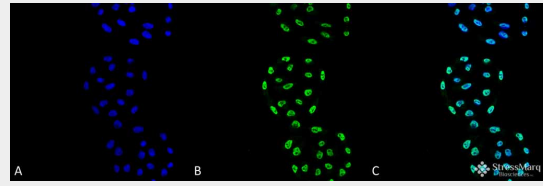


Western Blot analysis of Human A431, HEK293, and Jurkat cell lysates showing detection of ~58 kDa PP5 protein using Mouse Anti-PP5 Monoclonal Antibody, Clone 2E11 (ASM10167). Lane 1: MW Ladder. Lane 2: Human A431 (15 µg). Lane 3: Human HEK293 (15 µg). Lane 4: Human Jurkat (15 µg). Load: 15 µg. Block: 5% Skim Milk for 1 hour at RT. Primary Antibody: Mouse Anti-PP5 Monoclonal Antibody (ASM10167) at 1:500 for 1 hour at RT. Secondary Antibody: Goat

may find useful for product applications.

- [Western Blot](#)
- [Blocking Peptides](#)
- [Dot Blot](#)
- [Immunohistochemistry](#)
- [Immunofluorescence](#)
- [Immunoprecipitation](#)
- [Flow Cytometry](#)
- [Cell Culture](#)

Anti-Mouse IgG: HRP at 1:200 for 1 hour at RT. Color Development: ECL solution for 6 min at RT. Predicted/Observed Size: ~58 kDa.



Immunocytochemistry/Immunofluorescence analysis using Mouse Anti-PP5 Monoclonal Antibody, Clone 2E11 (ASM10167). Tissue: Cervical Cancer cell line (HeLa). Species: Human. Fixation: 4% Formaldehyde for 15 min at RT. Primary Antibody: Mouse Anti-PP5 Monoclonal Antibody (ASM10167) at 1:100 for 60 min at RT. Secondary Antibody: Goat Anti-Mouse ATTO 488 at 1:100 for 60 min at RT. Counterstain: DAPI (blue) nuclear stain at 1:5000 for 5 min RT. Localization: Nucleus. Magnification: 40X.

PP5 Antibody - Background

Proteins in this family participate in pathways regulated by reversible phosphorylation at serine and threonine residues, potentially playing a role in the regulation of cell growth and differentiation. PP5 or PPT is predominantly a nuclear protein and interacts with CDC16 and CDC27. It is found in association with several proteins that influence intracellular signaling-cascades initiated by hormones (glucocorticoids) or cellular stress (hypoxia, oxidative stress and DNA Damage). It phosphorylates serine residues of skeletal muscle phosphorylase and histone H1. It may also be involved in mitosis and RNA biogenesis regulation (1,2).

PP5 Antibody - References

1. Butzow R., et al. (1988) J Lab Clin Med. 111(2): 249-256.