

**GRP170 Antibody**  
**GRP170 Antibody, Clone 6G7-2H5**  
**Catalog # ASM10161**

**Specification**

**GRP170 Antibody - Product Information**

|                   |                             |
|-------------------|-----------------------------|
| Application       | <b>ICC/IF</b>               |
| Primary Accession | <a href="#">Q9Y4L1</a>      |
| Other Accession   | <a href="#">NP_006389.3</a> |
| Host              | <b>Mouse</b>                |
| Isotype           | <b>IgG2a</b>                |
| Reactivity        | <b>Human</b>                |
| Clonality         | <b>Monoclonal</b>           |

**Description**

Mouse Anti-Human GRP170 Monoclonal IgG2aK

**Target/Specificity**

Detects ~170kDa.

**Other Names**

ORP150 Antibody, HSP12A Antibody, Hypoxia up regulated 1 Antibody, Orp150 Antibody, Glucose regulated Antibody 170 Antibody, 150kDa oxygen regulated Antibody Antibody

**Immunogen**

Raised against a synthetic peptide of human GRP170

**Purification**

Protein G Purified

Storage **-20°C**

**Storage Buffer**

PBS pH7.4, 50% glycerol, 0.1% sodium azide

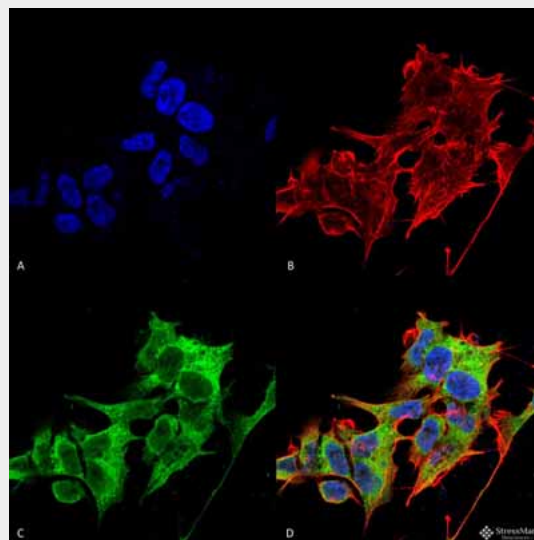
Shipping **Blue Ice or 4°C**  
Temperature

**Certificate of Analysis**

1 µg/ml of SMC-233 was sufficient for detection of GRP170 in 20 µg of HEK293 lysate by colorimetric immunoblot analysis using Goat anti-mouse IgG:HRP as the secondary antibody.

**Cellular Localization**

Endoplasmic Reticulum | Endoplasmic Reticulum Lumen



Immunocytochemistry/Immunofluorescence analysis using Mouse Anti-GRP170 Monoclonal Antibody, Clone 6G7-2H5 (ASM10161). Tissue: Neuroblastoma cell line (SK-N-BE). Species: Human. Fixation: 4% Formaldehyde for 15 min at RT. Primary Antibody: Mouse Anti-GRP170 Monoclonal Antibody (ASM10161) at 1:100 for 60 min at RT. Secondary Antibody: Goat Anti-Mouse ATTO 488 at 1:100 for 60 min at RT. Counterstain: Phalloidin Texas Red F-Actin stain; DAPI (blue) nuclear stain at 1:1000, 1:5000 for 60min RT, 5min RT. Localization: Cytoplasm, Endoplasmic Reticulum. Magnification: 60X. (A) DAPI (blue) nuclear stain (B) Phalloidin Texas Red F-Actin stain (C) GRP170 Antibody (D) Composite.

**GRP170 Antibody - Background**

GRP170, also known as ORP150, is the largest member of glucose-regulated Antibodys, and acts as a human chaperone Antibody. It is thought to play an important role in Antibody folding and secretion in the ER. Suppression of the Antibody is associated with accelerated apoptosis, therefore having an important cryoprotective role in hypoxia-induced cellular

## GRP170 Antibody - Protocols

Provided below are standard protocols that you may find useful for product applications.

- [Western Blot](#)
- [Blocking Peptides](#)
- [Dot Blot](#)
- [Immunohistochemistry](#)
- [Immunofluorescence](#)
- [Immunoprecipitation](#)
- [Flow Cytometry](#)
- [Cell Culture](#)

perturbation. This cryoprotective role has led to an anti-tumor immune response, which will hopefully lead to therapeutic immunizations against cancers (1). GRP170 has also been shown to bind with dendritic cells and provide the danger signals to induce anti-tumor immune responses (2).

## GRP170 Antibody - References

1. Wang H., et al. (2014) Front Oncol. 4: 377.
2. Manjili M.H., et al. (2006) Immun. Cell Biol. 84: 203-208.