

Ubiquitin Antibody
Ubiquitin Antibody, Clone 5B9-B3
Catalog # ASM10087

Specification

Ubiquitin Antibody - Product Information

Application **ICC/IF, WB**
Primary Accession [P0CG53](#)
Other Accession [NP_776558.1](#)
Host **Mouse**
Isotype **IgG2a Kappa**
Reactivity **Human, Mouse, Rat, Bovine**
Clonality **Monoclonal**

Description
Mouse Anti-Bovine Ubiquitin Monoclonal IgG2a Kappa

Target/Specificity
Detects ~10kDa.

Other Names
Polyubiquitin B Antibody, RPS27A Antibody, UBA52 Antibody, UBB Antibody, UBC Antibody, ubiquitin B Antibody

Immunogen
Native bovine ubiquitin, conjugated to KLH

Purification
Protein G Purified

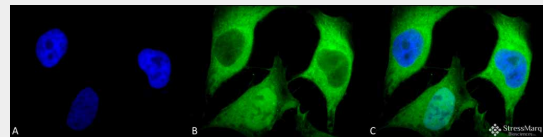
Storage **-20°C**
Storage Buffer
PBS pH7.4, 50% glycerol, 0.09% sodium azide

Shipping **Blue Ice or 4°C**
Temperature

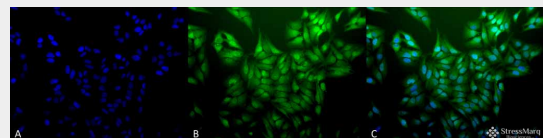
Certificate of Analysis
1 µg/ml of SMC-160 was sufficient for detection of ubiquitin in 10 µg of HeLa Lysate by colorimetric immunoblot analysis using Goat anti-mouse IgG:HRP as the secondary antibody.

Cellular Localization
Cytoplasm | Nucleus

Ubiquitin Antibody - Protocols



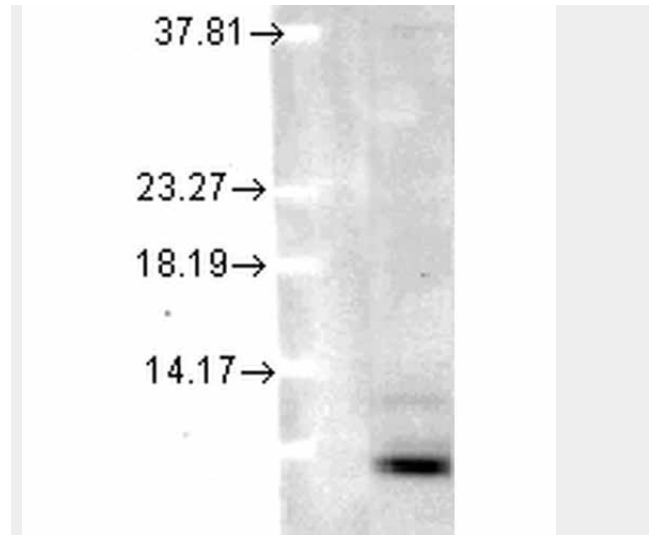
Immunocytochemistry/Immunofluorescence analysis using Mouse Anti-Ubiquitin Monoclonal Antibody, Clone 5B9-B3 (ASM10087). Tissue: HeLa Cells. Species: Human. Fixation: 2% Formaldehyde for 20 min at RT. Primary Antibody: Mouse Anti-Ubiquitin Monoclonal Antibody (ASM10087) at 1:100 for 12 hours at 4°C. Secondary Antibody: FITC Goat Anti-Mouse (green) at 1:200 for 2 hours at RT. Counterstain: DAPI (blue) nuclear stain at 1:40000 for 2 hours at RT. Localization: Diffuse nuclear and cytoplasmic staining. Magnification: 100x. (A) DAPI (blue) nuclear stain. (B) Anti-Ubiquitin Antibody. (C) Composite.



Immunocytochemistry/Immunofluorescence analysis using Mouse Anti-Ubiquitin Monoclonal Antibody, Clone 5B9-B3 (ASM10087). Tissue: HeLa Cells. Species: Human. Fixation: 2% Formaldehyde for 20 min at RT. Primary Antibody: Mouse Anti-Ubiquitin Monoclonal Antibody (ASM10087) at 1:100 for 12 hours at 4°C. Secondary Antibody: FITC Goat Anti-Mouse (green) at 1:200 for 2 hours at RT. Counterstain: DAPI (blue) nuclear stain at 1:40000 for 2 hours at RT. Localization: Diffuse nuclear and cytoplasmic staining. Magnification: 20x. (A) DAPI (blue) nuclear stain. (B) Anti-Ubiquitin Antibody. (C) Composite.

Provided below are standard protocols that you may find useful for product applications.

- [Western Blot](#)
- [Blocking Peptides](#)
- [Dot Blot](#)
- [Immunohistochemistry](#)
- [Immunofluorescence](#)
- [Immunoprecipitation](#)
- [Flow Cytometry](#)
- [Cell Culture](#)



Western Blot analysis of Human cell lysates showing detection of Ubiquitin protein using Mouse Anti-Ubiquitin Monoclonal Antibody, Clone 5B9-B3 (ASM10087). Load: 15 μ g. Block: 1.5% BSA for 30 minutes at RT. Primary Antibody: Mouse Anti-Ubiquitin Monoclonal Antibody (ASM10087) at 1:1000 for 2 hours at RT. Secondary Antibody: Sheep Anti-Mouse IgG: HRP for 1 hour at RT.

Ubiquitin Antibody - Background

Ubiquitin is a small protein that occurs in all eukaryotic cells. The ubiquitin protein itself consists of 76 amino acids and has a molecular mass of about 8.5kDa. Key features include its C-terminal tail and the 7 Lys residues. It is highly conserved among eukaryotic species: Human and yeast ubiquitin share 96% sequence identity (1). The main function of Ubiquitin is to clear abnormal, foreign and improperly folded proteins by targeting them for degradation by the 26S proteasome (2). Ubiquitination represents an essential cellular process affected by a multi-enzyme cascade involving classes of enzymes known as ubiquitin-activating enzymes (E1s), ubiquitin-conjugating enzymes (E2s or Ubc)s and ubiquitin-protein ligases (E3s). Ubiquitin is activated in a two-step reaction by an E1 ubiquitin-activating enzyme in a process requiring ATP as an energy source. The initial step involves production of an ubiquitin-adenylate intermediate. The second step transfers ubiquitin to the E1 active site cysteine residue, with release of AMP. This step results in a thioester linkage between the

C-terminal carboxyl group of ubiquitin and the E1 cysteine sulfhydryl group. The third step is a transfer of ubiquitin from E1 to the active site cysteine of a ubiquitin-conjugating enzyme E2 via a trans(thio)esterification reaction. And the final step of the ubiquitylation cascade creates an isopeptide bond between a lysine of the target protein and the C-terminal glycine of ubiquitin. In general, this step requires the activity of one of the hundreds of E3 ubiquitin-protein ligases (often termed simply ubiquitin ligase). E3 enzymes function as the substrate recognition modules of the system and are capable of interaction with both E2 and substrate(2, 3). Ubiquitination also participates in the internalization and degradation of plasma membrane proteins such as some of the TCR subunits while still ER-membrane associated (4). Ubiquitin also plays a role in regulating signal transduction cascades through the elimination inhibitory proteins, such as I κ B α and p27 (5).

Ubiquitin Antibody - References

1. Wilkinson K.D. (1995) Annu. Rev. Nutr. 15:161-189.
2. Bonifacino J.S., et al. (1998) Annu Rev Cell Dev Biol. 14: 19-57.
3. Boston Biochem: "Ubiquitin Proteasome Pathway Overview"
<http://www.bostonbiochem.com/upp.php>
4. Yang M., et al. (1998) J Exp Med. 187: 1835-1846.
5. Chen Z.J., et al. (1996) Cell 84: 853-862.