

**ETV4 Antibody**  
Catalog # ASC12031

**Specification**

**ETV4 Antibody - Product Information**

Application	<b>WB</b>
Primary Accession	<a href="#">P43268</a>
Other Accession	<a href="#">24307883</a> , <a href="#">NP_001977</a> , <a href="#">2118</a>
Reactivity	<b>Human, Mouse, Rat</b>
Host	<b>Rabbit</b>
Clonality	<b>Polyclonal</b>
Isotype	<b>IgG</b>
Calculated MW	<b>53938</b>
Application Notes	<b>ETV4 antibody can be used for Western blot at 1 - 2 µg/mL.</b>

**ETV4 Antibody - Additional Information**

Gene ID	<b>2118</b>
<b>Other Names</b>	
ETV4 Antibody: ETS variant 4, E1AF, PEA3, E1A-F, PEAS3	

**Precautions**

ETV4 Antibody is for research use only and not for use in diagnostic or therapeutic procedures.

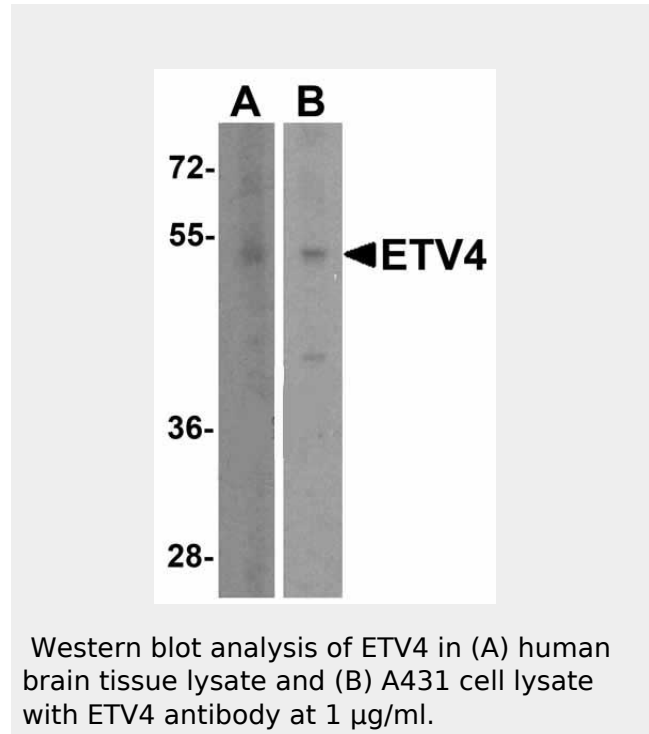
**ETV4 Antibody - Protein Information**

**Name** ETV4

**Synonyms** E1AF, PEA3

**Function**

Transcriptional activator (PubMed:[19307308](http://www.uniprot.org/citations/19307308) target="\_blank">19307308</a>, PubMed:[31552090](http://www.uniprot.org/citations/31552090) target="\_blank">31552090</a>). May play a role in keratinocyte differentiation (PubMed:[31552090](http://www.uniprot.org/citations/31552090) target="\_blank">31552090</a>).



**ETV4 Antibody - Background**

ETV4 Antibody: ETV4, along with the related proteins ETV1 and ETV5, form the PEA3 subfamily of the E26 transformation-specific (ETS) transcription factor family (1). ETV4 is thought to play roles in embryonic kidney development and fertility (2,3), and is also thought to be an oncoprotein in multiple cancers (4).

**ETV4 Antibody - References**

Xin JH, Cowie A, LAchance P, et al. Molecular cloning and characterization of PEA3, a new member of the Ets oncogene family that is differentially expressed in mouse embryonic cells. *Genes Dev.* 1992; 6:481-96.; Lu BC, Cebrian C, Chi X, et al. Etv4 and Etv5 are required downstream of GDNF and Ret for kidney branching morphogenesis. *Nat. Genet.* 2009; 41:1295-302.; Laing MA, Coonrod S, Hinton BT, et al. Male sexual dysfunction in mice bearing targeted mutant alleles of the PEA3 ets gene. *Mol. Cell. Biol.* 2000;

**Cellular Location**

Nucleus

{ECO:0000255|PROSITE-ProRule:PRU00237  
}.20:9337-45.;Oh S, Shin S, and Janknecht R.  
ETV1, 4 and 5: An oncogenic subfamily of ETS  
transcription factors. Biochim. Biophys. Acta  
2012: 1826:1-12.**Tissue Location**

Expressed in keratinocytes.

**ETV4 Antibody - Protocols**

Provided below are standard protocols that you may find useful for product applications.

- [Western Blot](#)
- [Blocking Peptides](#)
- [Dot Blot](#)
- [Immunohistochemistry](#)
- [Immunofluorescence](#)
- [Immunoprecipitation](#)
- [Flow Cytometry](#)
- [Cell Culture](#)