

CHADL Antibody
Catalog # ASC11963

Specification

CHADL Antibody - Product Information

Application **IF**
 Primary Accession [O6NUI6](#)
 Other Accession [NP_612490](#), [150356](#)
 Reactivity **Human, Mouse, Rat**
 Host **Rabbit**
 Clonality **Polyclonal**
 Isotype **IgG**
 Calculated MW **Predicted: 84 kDa**

Observed: 86 kDa
KDa

Application Notes **CHADL antibody can be used for the detection of CHADL by Western blot at 1 - 2 µg/mL. Antibody can also be used for Immunohistochemistry starting at 5 µg/mL.**

CHADL Antibody - Additional Information

Gene ID **150356**
Target/Specificity
 CHADL antibody was raised against a 19 amino acid peptide from near the carboxy terminus of human CHADL.

The immunogen is located within the last 50 amino acids of CHADL.

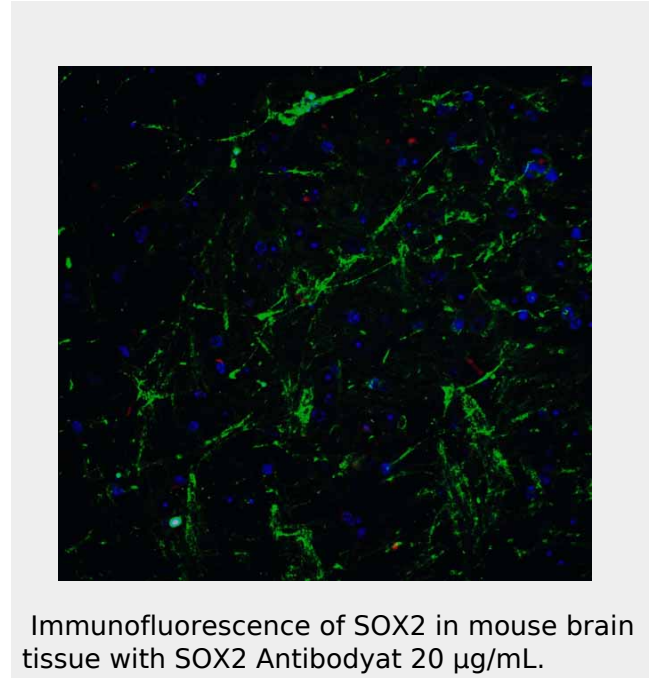
Reconstitution & Storage

CHADL antibody can be stored at 4°C for three months and -20°C, stable for up to one year.

Precautions

CHADL Antibody is for research use only and not for use in diagnostic or therapeutic procedures.

CHADL Antibody - Protein Information



CHADL Antibody - Background

The Chondroadherin-like (CHADL) protein, also known as SLRR4B, is homologous to the Chondroadherin protein and is expressed cartilaginous tissues (1). Like Chondroadherin, CHADL belongs to the small leucine-rich proteoglycan (SLRP) family and class IV subfamily and plays a significant role in the regulation of chondrocyte growth and proliferation (1,2). CHADL is thought to play a negative regulatory role in collagen fibrillogenesis and chondrocyte differentiation (1).

CHADL Antibody - References

Tillgren V, Ho JC, Onnerfjord P, et al. The novel small leucine-rich protein chondroadherin-like (CHADL) is expressed in cartilage and modulates chondrocyte differentiation. *J. Biol. Chem.* 2015; 290:918-25.
 Neame PJ, Sommarin Y, Boynton RE, et al. The structure of a 38-kDa leucine-rich protein (chondroadherin) isolated from bovine cartilage. *J. Biol. Chem.* 1994; 269:21547-54.

Name CHADL

Synonyms SLRR4B

Function

Potential negative modulator of chondrocyte differentiation. Inhibits collagen fibrillogenesis in vitro. May influence chondrocyte's differentiation by acting on its cellular collagenous microenvironment.

Cellular Location

Secreted. Secreted, extracellular space, extracellular matrix
{ECO:0000250|UniProtKB:E9Q7T7}

CHADL Antibody - Protocols

Provided below are standard protocols that you may find useful for product applications.

- [Western Blot](#)
- [Blocking Peptides](#)
- [Dot Blot](#)
- [Immunohistochemistry](#)
- [Immunofluorescence](#)
- [Immunoprecipitation](#)
- [Flow Cytometry](#)
- [Cell Culture](#)