

TMEM106B Antibody
Catalog # ASC11462

Specification

TMEM106B Antibody - Product Information

Application **WB, IHC, IF**
 Primary Accession [Q9NUM4](#)
 Other Accession [NP_060844](#),
[40254893](#)
 Reactivity **Human**
 Host **Rabbit**
 Clonality **Polyclonal**
 Isotype **IgG**
 Calculated MW **Predicted: 30 kDa**

Observed: 33 kDa
KDa

Application Notes **TMEM106B**
antibody can be
used for
detection of
TMEM106B by
Western blot at 1
µg/mL. Antibody
can also be used
for immunohisto-
chemistry starting
at 2.5 µg/mL. For
immunofluoresce
nce start at 2.5
µg/mL.

TMEM106B Antibody - Additional Information

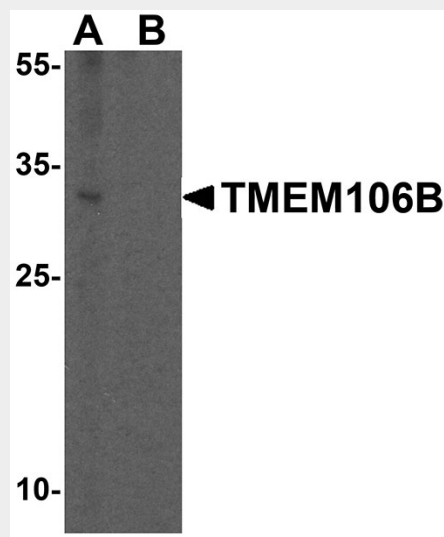
Gene ID **54664**
Target/Specificity
 TMEM106B; This TMEM106B antibody is predicted to have no cross-reactivity to TMEM106A.

Reconstitution & Storage

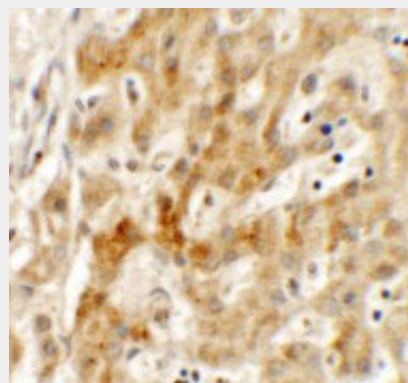
TMEM106B antibody can be stored at 4°C for three months and -20°C, stable for up to one year. As with all antibodies care should be taken to avoid repeated freeze thaw cycles. Antibodies should not be exposed to prolonged high temperatures.

Precautions

TMEM106B Antibody is for research use only and not for use in diagnostic or



Western blot analysis of TMEM106B in human brain tissue lysate with TMEM106B antibody at 1 µg/mL in (A) the absence and (B) the presence of blocking peptide.



Immunohistochemistry of TMEM106B in human liver tissue with TMEM106B antibody at 2.5 µg/mL.

therapeutic procedures.

TMEM106B Antibody - Protein Information

Name TMEM106B

Function

Involved in dendrite morphogenesis and maintenance by regulating lysosomal trafficking via its interaction with MAP6. May act by inhibiting retrograde transport of lysosomes along dendrites. Required for dendrite branching.

Cellular Location

Late endosome membrane; Single-pass type II membrane protein. Lysosome membrane; Single-pass type II membrane protein. Membrane; Lipid-anchor

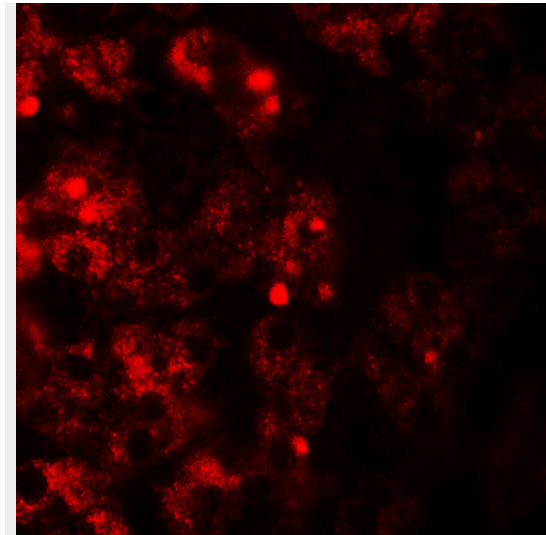
Tissue Location

Expressed in frontal cortex.

TMEM106B Antibody - Protocols

Provided below are standard protocols that you may find useful for product applications.

- [Western Blot](#)
- [Blocking Peptides](#)
- [Dot Blot](#)
- [Immunohistochemistry](#)
- [Immunofluorescence](#)
- [Immunoprecipitation](#)
- [Flow Cytometry](#)
- [Cell Culture](#)



Immunofluorescence of TMEM106B in human liver tissue with TMEM106A antibody at 20 $\mu\text{g}/\text{mL}$.

TMEM106B Antibody - Background

TMEM106B Antibody: Transmembrane protein 106B (TMEM106B) is a single-pass transmembrane protein that is thought to be a novel risk factor for frontotemporal lobar degeneration (FTLD), a group of clinically, pathologically and genetically heterogeneous disorders associated with atrophy in the frontal lobe and temporal lobe of the brain. The actual role of TMEM106B, and that of the closely related protein TMEM106A are still undetermined.

TMEM106B Antibody - References

Van Deerlin VM, Sleiman PM, Martinez-Lage M, et al. Common variants at 7p21 are associated with frontotemporal lobar degeneration with TDP-43 inclusions. *Nat. Genet.* 2010; 42:234-9.
Aswathy PM, Jairani PS, and Mathuranath PS. Genetics of frontotemporal lobar degeneration. *Ann. Indian Acad. Neurol.* 2010; 13(Suppl 2):S55-62.