

ZBED3 Antibody
Catalog # ASC10880

Specification

ZBED3 Antibody - Product Information

Application	WB, ICC
Primary Accession	Q96IU2
Other Accession	NP_115743 , 14150185
Reactivity	Human
Host	Rabbit
Clonality	Polyclonal
Isotype	IgG
Application Notes	ZBED3 antibody can be used for detection of ZBED3 by Western blot at 1 µg/mL. Despite its predicted molecular weight, ZBED3 often migrates at a higher position in SDS-PAGE. Antibody can also be used for immunocytochemistry starting at 20 µg/mL.

ZBED3 Antibody - Additional Information

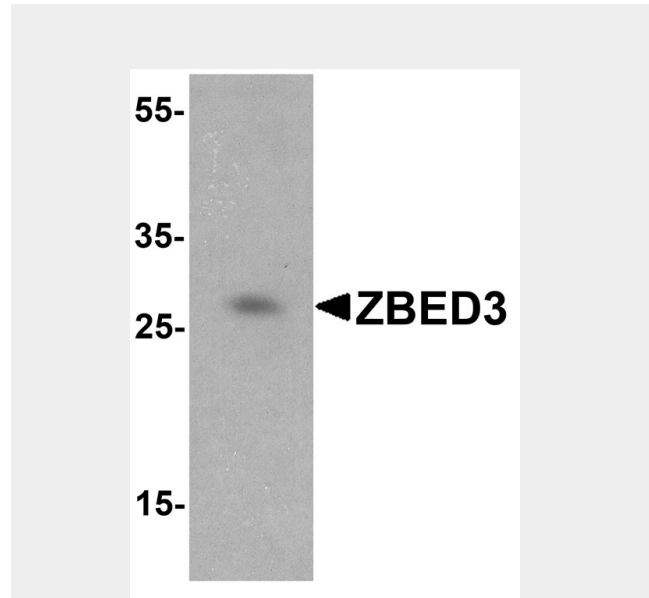
Gene ID **84327**
Target/Specificity
ZBED3; This antibody is predicted to have no cross-reactivity to ZBED1 or ZBED2.

Reconstitution & Storage

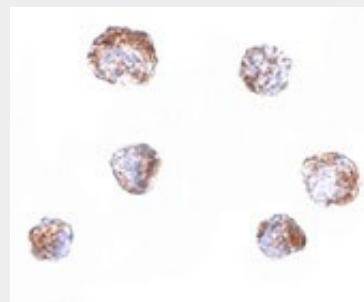
ZBED3 antibody can be stored at 4°C for three months and -20°C, stable for up to one year. As with all antibodies care should be taken to avoid repeated freeze thaw cycles. Antibodies should not be exposed to prolonged high temperatures.

Precautions

ZBED3 Antibody is for research use only and not for use in diagnostic or therapeutic procedures.



Western blot analysis of ZBED3 in Jurkat cell lysate with ZBED3 antibody at 1 µg/mL.



Immunocytochemistry of ZBED3 in A549 cells with ZBED3 antibody at 20 µg/mL.

ZBED3 Antibody - Background

ZBED3 Antibody: Axin is a key modulator of the Wnt/beta-catenin pathway and acts as a scaffold protein in phosphorylating and degrading cytoplasmic beta-catenin. ZBED3, a member of the Zinc finger BED-type domain containing superfamily, has been recently identified as an Axin-interacting protein and has been suggested to modulate the Wnt/beta-catenin signaling pathway. RNA interference (RNAi) experiments targeting ZBED3 RNA attenuated Wnt-induced

ZBED3 Antibody - Protein Information

Name ZBED3

Function

Acts as a positive regulator in the activation of the canonical Wnt/beta-catenin signaling pathway by stabilizing cytoplasmic beta-catenin (By similarity). Involved in transcription activation of Wnt target gene expression (By similarity). Plays a role in symmetric division of blastomeres in the early stages of embryogenesis via regulation of mitotic spindle central positioning and organization of the F-actin filament network (By similarity). Plays a role in regulating the distribution of cellular organelles, via modulation of cytoskeletal dynamics and cytoplasmic lattice formation (By similarity).

Cellular Location

Cytoplasm

{ECO:0000250|UniProtKB:Q9D0L1}.

Membrane

{ECO:0000250|UniProtKB:Q9D0L1}.

Secreted

Tissue Location

Secreted in blood plasma, and expressed in skeletal muscle and adipose tissue (at protein level)

beta-catenin accumulation, lymphoid enhancer binding factor-1-dependent luciferase reporter activity, and Wnt gene expression.

ZBED3 Antibody - References

Chen T, Li M, Ding Y, et al. Identification of Zinc-finger BED domain containing 3 (Zbed3) as a novel axin-interacting protein that activates Wnt/b-catenin signaling. *J. Biol. Chem.*2009; 284:6683-9.

ZBED3 Antibody - Protocols

Provided below are standard protocols that you may find useful for product applications.

- [Western Blot](#)
- [Blocking Peptides](#)
- [Dot Blot](#)
- [Immunohistochemistry](#)
- [Immunofluorescence](#)
- [Immunoprecipitation](#)
- [Flow Cytometry](#)
- [Cell Culture](#)