

RHBG Antibody (C-term)
Affinity Purified Rabbit Polyclonal Antibody (Pab)
Catalog # AP9979a**Specification****RHBG Antibody (C-term) - Product Information**

| | |
|-------------------|------------------------|
| Application | WB, IHC-P, FC,E |
| Primary Accession | O9H310 |
| Reactivity | Human |
| Host | Rabbit |
| Clonality | Polyclonal |
| Isotype | Rabbit Ig |
| Calculated MW | 47231 |
| Antigen Region | 423-450 |

RHBG Antibody (C-term) - Additional Information**Gene ID** 57127**Other Names**

Ammonium transporter Rh type B, Rhesus blood group family type B glycoprotein, Rh family type B glycoprotein, Rh type B glycoprotein, RHBG

Target/Specificity

This RHBG antibody is generated from rabbits immunized with a KLH conjugated synthetic peptide between 423-450 amino acids from the C-terminal region of human RHBG.

Dilution

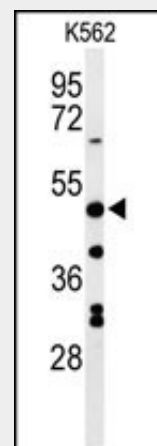
WB~~1:1000
IHC-P~~1:50~100
FC~~1:10~50

Format

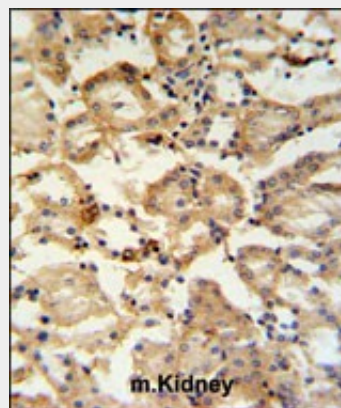
Purified polyclonal antibody supplied in PBS with 0.09% (W/V) sodium azide. This antibody is purified through a protein A column, followed by peptide affinity purification.

Storage

Maintain refrigerated at 2-8°C for up to 2 weeks. For long term storage store at -20°C in small aliquots to prevent freeze-thaw cycles.

Precautions

Western blot analysis of RHBG Antibody (C-term) (Cat. #AP9979a) in K562 cell line lysates (35ug/lane). RHBG (arrow) was detected using the purified Pab.



RHBG Antibody (C-term) (Cat. #AP9979a) IHC analysis in formalin fixed and paraffin embedded mouse kidney tissue followed by peroxidase conjugation of the secondary antibody and DAB staining. This data demonstrates the use of the RHBG Antibody (C-term) for immunohistochemistry. Clinical relevance has not been evaluated.

RHBG Antibody (C-term) is for research use only and not for use in diagnostic or therapeutic procedures.

RHBG Antibody (C-term) - Protein Information

Name RHBG

Function

Functions as a specific ammonium transporter.

Cellular Location

Basolateral cell membrane; Multi-pass membrane protein. Cytoplasmic vesicle membrane; Multi-pass membrane protein

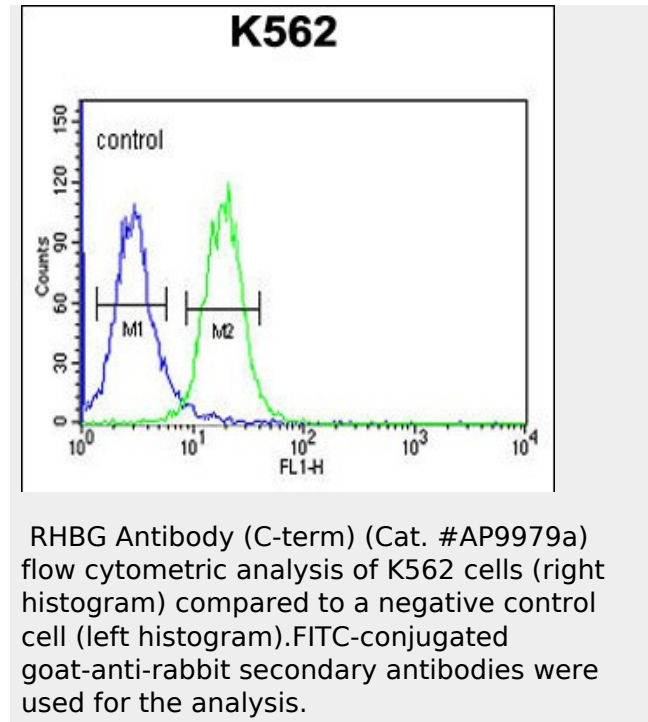
Tissue Location

Specifically expressed in kidney. Also detected in liver and ovary.

RHBG Antibody (C-term) - Protocols

Provided below are standard protocols that you may find useful for product applications.

- [Western Blot](#)
- [Blocking Peptides](#)
- [Dot Blot](#)
- [Immunohistochemistry](#)
- [Immunofluorescence](#)
- [Immunoprecipitation](#)
- [Flow Cytometry](#)
- [Cell Culture](#)



RHBG Antibody (C-term) - Background

RHBG encodes one of two non-erythroid members of the Rhesus (Rh) protein family. Non-erythroid Rh protein family members are mainly expressed in the kidney and belong to the methylammonium-ammonium permease/ammonia transporters superfamily. All Rh family proteins are predicted to be transmembrane proteins with 12 membrane spanning domains and intracytoplasmic N- and C-termini.

RHBG Antibody (C-term) - References

- Han, K.H., et al. Am. J. Physiol. Lung Cell Mol. Physiol. 297 (1), L153-L163 (2009)
Brown, A.C., et al. Am. J. Physiol. Renal Physiol. 296 (6), F1279-F1290 (2009)
Sohet, F., et al. J. Biol. Chem. 283(39):26557-26567(2008)