

NEDD4 Antibody (C-term)
Purified Rabbit Polyclonal Antibody (Pab)
Catalog # AP9934b

Specification

NEDD4 Antibody (C-term) - Product Information

Application	WB, IHC-P, FC,E
Primary Accession	P46934
Other Accession	Q62940 , P46935
Reactivity	Human, Mouse
Predicted	Rat
Host	Rabbit
Clonality	Polyclonal
Isotype	Rabbit Ig
Calculated MW	149114
Antigen Region	1288-1319

NEDD4 Antibody (C-term) - Additional Information

Gene ID 4734

Other Names

E3 ubiquitin-protein ligase NEDD4, 632-, Cell proliferation-inducing gene 53 protein, Neural precursor cell expressed developmentally down-regulated protein 4, NEDD-4, NEDD4, KIAA0093, NEDD4-1

Target/Specificity

This NEDD4 antibody is generated from rabbits immunized with a KLH conjugated synthetic peptide between 1288-1319 amino acids from the C-terminal region of human NEDD4.

Dilution

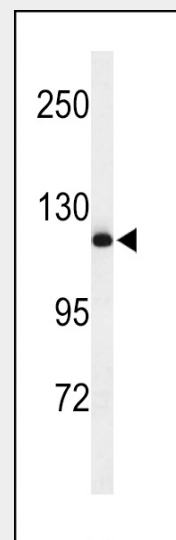
WB~~1:1000
IHC-P~~1:50~100
FC~~1:10~50

Format

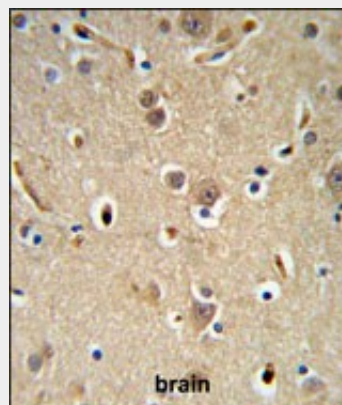
Purified polyclonal antibody supplied in PBS with 0.09% (W/V) sodium azide. This antibody is prepared by Saturated Ammonium Sulfate (SAS) precipitation followed by dialysis against PBS.

Storage

Maintain refrigerated at 2-8°C for up to 2 weeks. For long term storage store at -20°C



Western blot analysis of NEDD4 Antibody (C-term) (Cat. #AP9934b) in mouse NIH-3T3 cell line lysates (35ug/lane). NEDD4 (arrow) was detected using the purified Pab.



NEDD4 Antibody (C-term)(Cat. #AP9934b) IHC analysis in formalin fixed and paraffin embedded brain tissue followed by peroxidase conjugation of the secondary antibody and DAB staining. This data demonstrates the use of the NEDD4 Antibody (C-term) for immunohistochemistry. Clinical relevance has not been evaluated.

in small aliquots to prevent freeze-thaw cycles.

Precautions

NEDD4 Antibody (C-term) is for research use only and not for use in diagnostic or therapeutic procedures.

NEDD4 Antibody (C-term) - Protein Information

Name NEDD4

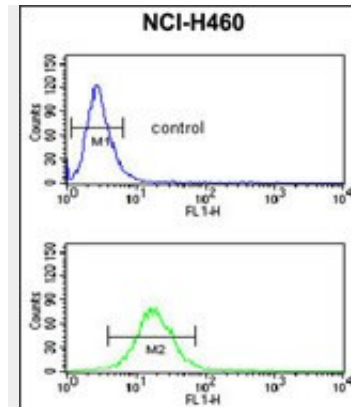
Synonyms KIAA0093, NEDD4-1

Function

E3 ubiquitin-protein ligase which accepts ubiquitin from an E2 ubiquitin-conjugating enzyme in the form of a thioester and then directly transfers the ubiquitin to targeted substrates. Specifically ubiquitinates 'Lys-63' in target proteins (PubMed:23644597). Involved in the pathway leading to the degradation of VEGFR-2/KDFR, independently of its ubiquitin-ligase activity. Monoubiquitinates IGF1R at multiple sites, thus leading to receptor internalization and degradation in lysosomes. Ubiquitinates FGFR1, leading to receptor internalization and degradation in lysosomes. Promotes ubiquitination of RAPGEF2. According to PubMed:18562292 the direct link between NEDD4 and PTEN regulation through polyubiquitination described in PubMed:17218260 is questionable. Involved in ubiquitination of ERBB4 intracellular domain E4ICD. Involved in the budding of many viruses. Part of a signaling complex composed of NEDD4, RAP2A and TNIK which regulates neuronal dendrite extension and arborization during development. Ubiquitinates TNK2 and regulates EGF-induced degradation of EGFR and TNF2. Ubiquitinates BRAT1 and this ubiquitination is enhanced in the presence of NDFIP1 (PubMed:25631046).

Cellular Location

Cytoplasm. Cell membrane; Peripheral



NEDD4 Antibody (C-term) (Cat. #AP9934b) flow cytometric analysis of NCI-H460 cells (bottom histogram) compared to a negative control cell (top histogram). FITC-conjugated goat-anti-rabbit secondary antibodies were used for the analysis.

NEDD4 Antibody (C-term) - Background

Nedd4 is one of a group of mouse genes that show developmentally regulated expression in mouse embryonic brain. Nedd4 is expressed in various other embryonic tissues and persists in most adult tissues.

NEDD4 Antibody (C-term) - References

- Lin, Q., et al. Mol. Cell. Biol. 30(6):1541-1554(2010)
- Crowther-Swanepoel, D., et al. Nat. Genet. 42(2):132-136(2010)
- Edwin, F., et al. J. Biol. Chem. 285(1):255-264(2010)
- Guo, Y.Y., et al. Zhongguo Yi Xue Ke Xue Yuan Xue Bao 31(6):679-685(2009)

membrane protein Note=Recruited to the plasma membrane by GRB10. Once complexed with GRB10 and IGF1R, follows IGF1R internalization, remaining associated with early endosomes. Uncouples from IGF1R-containing endosomes before the sorting of the receptor to the lysosomal compartment (By similarity). May be recruited to exosomes by NDFIP1. {ECO:0000250, ECO:0000269|PubMed:18819914}

NEDD4 Antibody (C-term) - Protocols

Provided below are standard protocols that you may find useful for product applications.

- [Western Blot](#)
- [Blocking Peptides](#)
- [Dot Blot](#)
- [Immunohistochemistry](#)
- [Immunofluorescence](#)
- [Immunoprecipitation](#)
- [Flow Cytometry](#)
- [Cell Culture](#)