

TMUB2 Antibody (Center)
Affinity Purified Rabbit Polyclonal Antibody (Pab)
Catalog # AP9642c

Specification

TMUB2 Antibody (Center) - Product Information

Application	WB,E
Primary Accession	Q71RG4
Other Accession	Q2HJA8
Reactivity	Human, Mouse
Predicted	Bovine
Host	Rabbit
Clonality	Polyclonal
Isotype	Rabbit Ig
Antigen Region	83-112

TMUB2 Antibody (Center) - Additional Information

Gene ID 79089

Other Names

Transmembrane and ubiquitin-like domain-containing protein 2, TMUB2

Target/Specificity

This TMUB2 antibody is generated from rabbits immunized with a KLH conjugated synthetic peptide between 83-112 amino acids from the Central region of human TMUB2.

Dilution

WB~~1:1000

Format

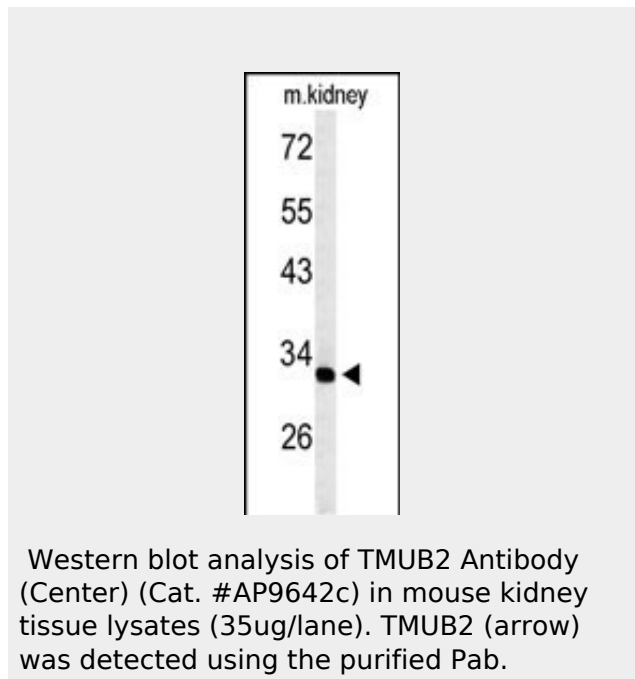
Purified polyclonal antibody supplied in PBS with 0.09% (W/V) sodium azide. This antibody is purified through a protein A column, followed by peptide affinity purification.

Storage

Maintain refrigerated at 2-8°C for up to 2 weeks. For long term storage store at -20°C in small aliquots to prevent freeze-thaw cycles.

Precautions

TMUB2 Antibody (Center) is for research use only and not for use in diagnostic or



TMUB2 Antibody (Center) - References

- Wan, D., et al. Proc. Natl. Acad. Sci. U.S.A. 101(44):15724-15729(2004)
Clark, H.F., et al. Genome Res. 13(10):2265-2270(2003)

therapeutic procedures.

TMUB2 Antibody (Center) - Protein Information

Name TMUB2

Cellular Location

Membrane; Multi-pass membrane protein

TMUB2 Antibody (Center) - Protocols

Provided below are standard protocols that you may find useful for product applications.

- [Western Blot](#)
- [Blocking Peptides](#)
- [Dot Blot](#)
- [Immunohistochemistry](#)
- [Immunofluorescence](#)
- [Immunoprecipitation](#)
- [Flow Cytometry](#)
- [Cell Culture](#)