

CNTN1 Antibody (Center)
Affinity Purified Rabbit Polyclonal Antibody (Pab)
Catalog # AP9490c

Specification

CNTN1 Antibody (Center) - Product Information

Application	WB,E
Primary Accession	Q12860
Other Accession	O63198 , P12960 , Q28106
Reactivity Predicted	Human Bovine, Mouse, Rat
Host	Rabbit
Clonality	Polyclonal
Isotype	Rabbit Ig
Calculated MW	113320
Antigen Region	635-662

CNTN1 Antibody (Center) - Additional Information

Gene ID 1272

Other Names

Contactin-1, Glycoprotein gp135, Neural cell surface protein F3, CNTN1

Target/Specificity

This CNTN1 antibody is generated from rabbits immunized with a KLH conjugated synthetic peptide between 635-662 amino acids from the Central region of human CNTN1.

Dilution

WB~~1:1000

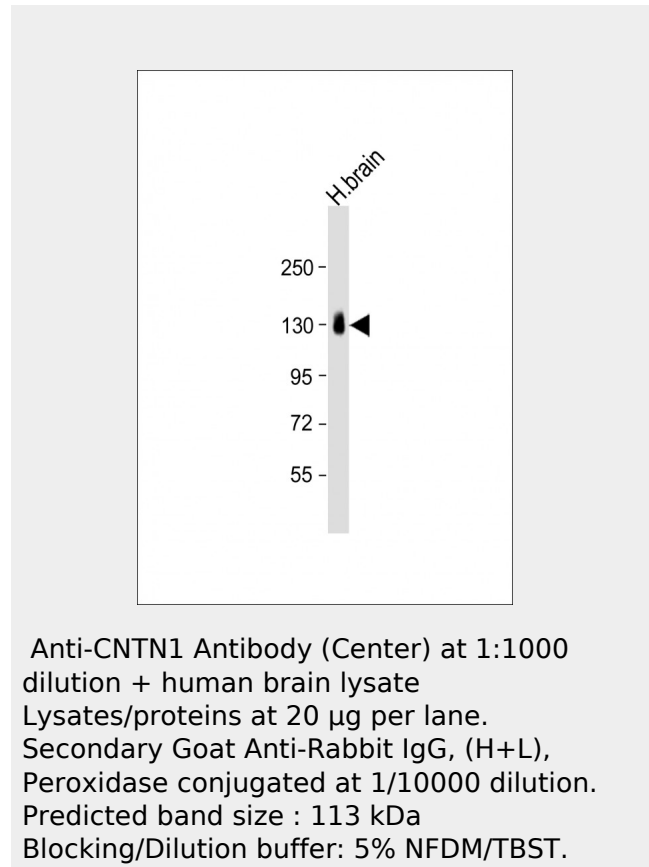
Format

Purified polyclonal antibody supplied in PBS with 0.09% (W/V) sodium azide. This antibody is purified through a protein A column, followed by peptide affinity purification.

Storage

Maintain refrigerated at 2-8°C for up to 2 weeks. For long term storage store at -20°C in small aliquots to prevent freeze-thaw cycles.

Precautions



CNTN1 Antibody (Center) - Background

CNTN1 is a member of the immunoglobulin superfamily. It is a glycosylphosphatidylinositol (GPI)-anchored neuronal membrane protein that functions as a cell adhesion molecule. It may play a role in the formation of axon connections in the developing nervous system.

CNTN1 Antibody (Center) - References

- Gratacos, M., et al. Am. J. Med. Genet. B Neuropsychiatr. Genet. 150B (6), 808-816 (2009) :
Compton, A.G., et al. Am. J. Hum. Genet. 83(6):714-724(2008)
Melzer, D., et al. PLoS Genet. 4 (5), E1000072 (2008)

CNTN1 Antibody (Center) is for research use only and not for use in diagnostic or therapeutic procedures.

CNTN1 Antibody (Center) - Protein Information

Name CNTN1

Function

Contactins mediate cell surface interactions during nervous system development. Involved in the formation of paranodal axo-glial junctions in myelinated peripheral nerves and in the signaling between axons and myelinating glial cells via its association with CNTNAP1. Participates in oligodendrocytes generation by acting as a ligand of NOTCH1. Its association with NOTCH1 promotes NOTCH1 activation through the released notch intracellular domain (NICD) and subsequent translocation to the nucleus. Interaction with TNR induces a repulsion of neurons and an inhibition of neurite outgrowth (By similarity).

Cellular Location

[Isoform 1]: Cell membrane; Lipid-anchor, GPI- anchor; Extracellular side

Tissue Location

Strongly expressed in brain and in neuroblastoma and retinoblastoma cell lines. Lower levels of expression in lung, pancreas, kidney and skeletal muscle.

CNTN1 Antibody (Center) - Protocols

Provided below are standard protocols that you may find useful for product applications.

- [Western Blot](#)
- [Blocking Peptides](#)
- [Dot Blot](#)
- [Immunohistochemistry](#)
- [Immunofluorescence](#)
- [Immunoprecipitation](#)
- [Flow Cytometry](#)
- [Cell Culture](#)