

NYX Antibody (N-term)
Affinity Purified Rabbit Polyclonal Antibody (Pab)
Catalog # AP9483a

Specification

NYX Antibody (N-term) - Product Information

Application	WB,E
Primary Accession	O9GZU5
Other Accession	NP_072089
Reactivity	Human
Host	Rabbit
Clonality	Polyclonal
Isotype	Rabbit Ig
Calculated MW	52000
Antigen Region	53-80

NYX Antibody (N-term) - Additional Information

Gene ID 60506

Other Names
Nyctalopin, NYX, CLRP

Target/Specificity

This NYX antibody is generated from rabbits immunized with a KLH conjugated synthetic peptide between 53-80 amino acids from the N-terminal region of human NYX.

Dilution

WB~~1:1000

Format

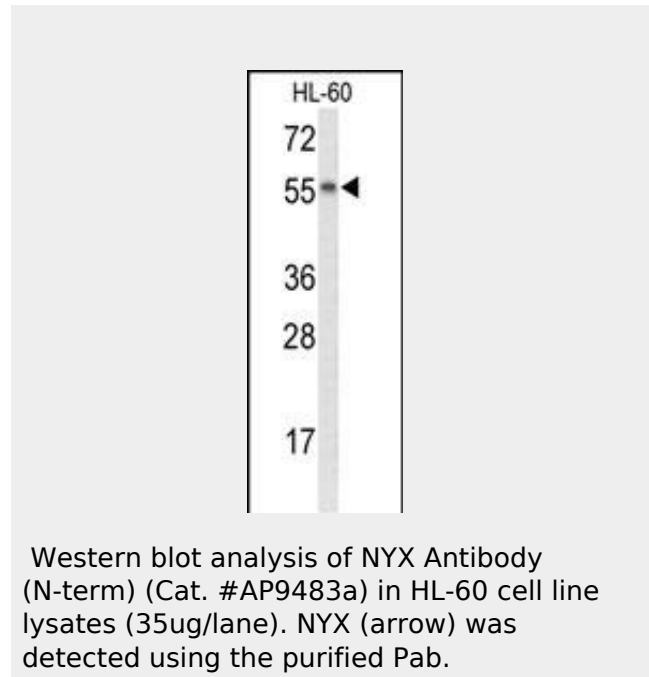
Purified polyclonal antibody supplied in PBS with 0.09% (W/V) sodium azide. This antibody is purified through a protein A column, followed by peptide affinity purification.

Storage

Maintain refrigerated at 2-8°C for up to 2 weeks. For long term storage store at -20°C in small aliquots to prevent freeze-thaw cycles.

Precautions

NYX Antibody (N-term) is for research use only and not for use in diagnostic or therapeutic procedures.



NYX Antibody (N-term) - Background

The product of this gene belongs to the small leucine-rich proteoglycan (SLRP) family of proteins. Defects in this gene are the cause of congenital stationary night blindness type 1 (CSNB1), also called X-linked congenital stationary night blindness (XLCSNB). CSNB1 is a rare inherited retinal disorder characterized by impaired scotopic vision, myopia, hyperopia, nystagmus and reduced visual acuity. The role of other SLRP proteins suggests that mutations in this gene disrupt developing retinal interconnections involving the ON-bipolar cells, leading to the visual losses seen in patients with complete CSNB. [provided by RefSeq].

NYX Antibody (N-term) - References

- ?Leroy, B.P., et al. Br J Ophthalmol 93(5):692-696(2009)
- ?Zhang, Q., et al. Mol. Vis. 13, 330-336 (2007)
- ?Morgans, C.W., et al. Eur. J. Neurosci. 23(5):1163-1171(2006)
- ?Xiao, X., et al. J. Hum. Genet.

NYX Antibody (N-term) - Protein Information

51(7):634-640(2006)

Name NYX**Synonyms** CLRP**Cellular Location**

Secreted, extracellular space, extracellular matrix

Tissue Location

Expressed in kidney and retina. Also at low levels in brain, testis and muscle. Within the retina, expressed in the inner segment of photoreceptors, outer and inner nuclear layers and the ganglion cell layer.

NYX Antibody (N-term) - Protocols

Provided below are standard protocols that you may find useful for product applications.

- [Western Blot](#)
- [Blocking Peptides](#)
- [Dot Blot](#)
- [Immunohistochemistry](#)
- [Immunofluorescence](#)
- [Immunoprecipitation](#)
- [Flow Cytometry](#)
- [Cell Culture](#)