

ANO7 Antibody (N-term)
Affinity Purified Rabbit Polyclonal Antibody (Pab)
Catalog # AP9421a

Specification

ANO7 Antibody (N-term) - Product Information

Application	WB,E
Primary Accession	O6IWH7
Reactivity	Human
Host	Rabbit
Clonality	Polyclonal
Isotype	Rabbit IgG
Antigen Region	106-135

ANO7 Antibody (N-term) - Additional Information

Gene ID 50636

Other Names

Anoctamin-7, Dresden transmembrane protein of the prostate, D-TMPP, IPCA-5, New gene expressed in prostate, Prostate cancer-associated protein 5, Transmembrane protein 16G, ANO7, NGEF, PCANAP5, TMEM16G

Target/Specificity

This ANO7 antibody is generated from rabbits immunized with a KLH conjugated synthetic peptide between 106-135 amino acids from the N-terminal region of human ANO7.

Dilution

WB~~1:2000

Format

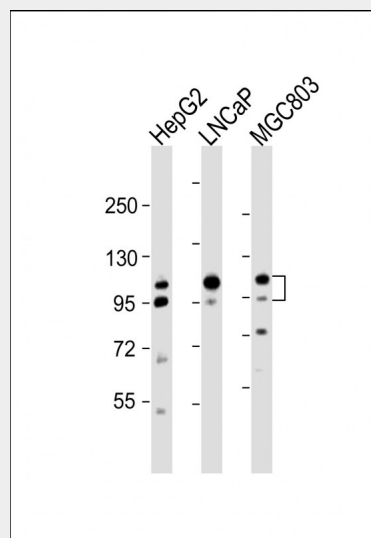
Purified polyclonal antibody supplied in PBS with 0.09% (W/V) sodium azide. This antibody is purified through a protein A column, followed by peptide affinity purification.

Storage

Maintain refrigerated at 2-8°C for up to 2 weeks. For long term storage store at -20°C in small aliquots to prevent freeze-thaw cycles.

Precautions

ANO7 Antibody (N-term) is for research use



All lanes : Anti-ANO7 Antibody (N-term) at 1:2000 dilution Lane 1: HepG2 whole cell lysate Lane 2: LNCaP whole cell lysate Lane 3: MGC803 whole cell lysate Lysates/proteins at 20 µg per lane. Secondary Goat Anti-Rabbit IgG, (H+L), Peroxidase conjugated at 1/10000 dilution. Predicted band size : 106 kDa Blocking/Dilution buffer: 5% NFDM/TBST.

ANO7 Antibody (N-term) - Background

ANO7 may act as a calcium-activated chloride channel. This protein May play a role in cell-cell interactions.

ANO7 Antibody (N-term) - References

- Cereda, V., et al. Cancer Immunol. Immunother. 59(1):63-71(2010)
- Hartzell, H.C., et al. J. Physiol. (Lond.) 587 (PT 10), 2127-2139 (2009)
- Das, S., et al. Cancer Res. 68(15):6306-6312(2008)
- Kiessling, A., et al. Prostate 64(4):387-400(2005)
- Katoh, M., et al. Int. J. Mol. Med. 14(4):759-764(2004)

only and not for use in diagnostic or therapeutic procedures.

ANO7 Antibody (N-term) - Protein Information

Name ANO7

Synonyms NGEP, PCANAP5, TMEM16G

Function

Has calcium-dependent phospholipid scramblase activity; scrambles phosphatidylserine, phosphatidylcholine and galactosylceramide (By similarity). Does not exhibit calcium-activated chloride channel (CaCC) activity (PubMed:22075693). May play a role in cell-cell interactions (PubMed:17308099).

Cellular Location

[Isoform 1]: Cell membrane; Multi-pass membrane protein. Cell junction. Endoplasmic reticulum. Note=Concentrates at sites of cell-cell contact (PubMed:17308099). Shows an intracellular localization according to PubMed:22075693 and PubMed:20056604

Tissue Location

Specifically expressed in epithelial cells of the prostate (at protein level).

ANO7 Antibody (N-term) - Protocols

Provided below are standard protocols that you may find useful for product applications.

- [Western Blot](#)
- [Blocking Peptides](#)
- [Dot Blot](#)
- [Immunohistochemistry](#)
- [Immunofluorescence](#)
- [Immunoprecipitation](#)
- [Flow Cytometry](#)
- [Cell Culture](#)