

ADAMDEC1 Antibody (N-term)
Purified Rabbit Polyclonal Antibody (Pab)
Catalog # AP9119a

Specification

ADAMDEC1 Antibody (N-term) - Product Information

Application	WB, IHC-P, FC,E
Primary Accession	O15204
Reactivity	Human
Host	Rabbit
Clonality	Polyclonal
Isotype	Rabbit Ig
Calculated MW	52775
Antigen Region	39-69

ADAMDEC1 Antibody (N-term) - Additional Information

Gene ID 27299

Other Names

ADAM DEC1, 3424-, A disintegrin and metalloproteinase domain-like protein decysin-1, ADAM-like protein decysin-1, ADAMDEC1

Target/Specificity

This ADAMDEC1 antibody is generated from rabbits immunized with a KLH conjugated synthetic peptide between 39-69 amino acids from the N-terminal region of human ADAMDEC1.

Dilution

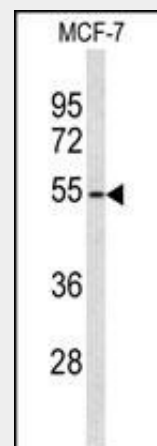
WB~~1:1000
IHC-P~~1:50~100
FC~~1:10~50

Format

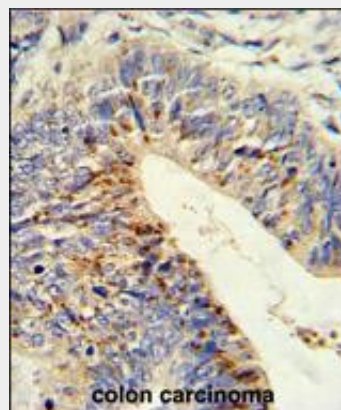
Purified polyclonal antibody supplied in PBS with 0.09% (W/V) sodium azide. This antibody is prepared by Saturated Ammonium Sulfate (SAS) precipitation followed by dialysis against PBS.

Storage

Maintain refrigerated at 2-8°C for up to 2 weeks. For long term storage store at -20°C in small aliquots to prevent freeze-thaw cycles.



Western blot analysis of ADAMDEC1 Antibody (N-term) (Cat. #AP9119a) in MCF-7 cell line lysates (35ug/lane). ADAMDEC1 (arrow) was detected using the purified Pab.



Formalin-fixed and paraffin-embedded human colon carcinoma reacted with ADAMDEC1 Antibody (N-term), which was peroxidase-conjugated to the secondary antibody, followed by DAB staining. This data demonstrates the use of this antibody for immunohistochemistry; clinical relevance has not been evaluated.

Precautions

ADAMDEC1 Antibody (N-term) is for research use only and not for use in diagnostic or therapeutic procedures.

ADAMDEC1 Antibody (N-term) - Protein Information

Name ADAMDEC1

Function

May play an important role in the control of the immune response and during pregnancy.

Cellular Location

Secreted.

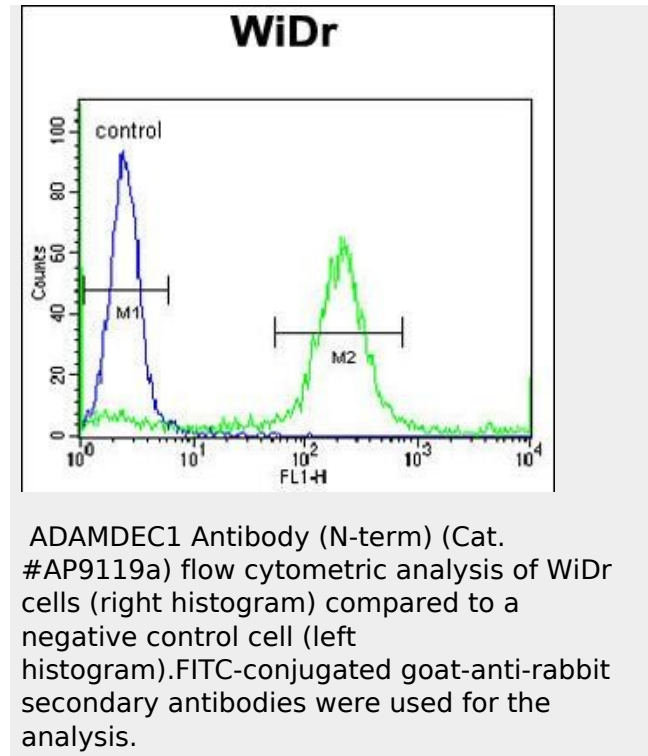
Tissue Location

Expressed highly in the small intestine and appendix, moderately in lymph node, mucosal lining of the colon, thymus, spleen and very weakly in the bone marrow. Predominantly expressed in dendritic cells (DC) of the germinal center. Weakly expressed in monocyte and highly expressed in macrophage. Absent in immature DC.

ADAMDEC1 Antibody (N-term) - Protocols

Provided below are standard protocols that you may find useful for product applications.

- [Western Blot](#)
- [Blocking Peptides](#)
- [Dot Blot](#)
- [Immunohistochemistry](#)
- [Immunofluorescence](#)
- [Immunoprecipitation](#)
- [Flow Cytometry](#)
- [Cell Culture](#)



ADAMDEC1 Antibody (N-term) - Background

ADAMDEC1 may play an important role in the control of the immune response and during pregnancy.

ADAMDEC1 Antibody (N-term) - References

Liu T., et.al., J. Proteome Res. 4:2070-2080(2005).