

**B4GalT1 Antibody (C-term)**  
**Affinity Purified Rabbit Polyclonal Antibody (Pab)**  
**Catalog # AP8892b**

**Specification**

**B4GalT1 Antibody (C-term) - Product Information**

Application	<b>WB, FC,E</b>
Primary Accession	<a href="#">P15291</a>
Other Accession	<a href="#">P15535</a> , <a href="#">P08037</a>
Reactivity	<b>Human</b>
Predicted	<b>Bovine, Mouse</b>
Host	<b>Rabbit</b>
Clonality	<b>Polyclonal</b>
Isotype	<b>Rabbit Ig</b>
Antigen Region	<b>329-358</b>

**B4GalT1 Antibody (C-term) - Additional Information**

**Gene ID 2683**

**Other Names**

Beta-1, 4-galactosyltransferase 1, Beta-1, 4-GalTase 1, Beta4Gal-T1, b4Gal-T1, 241-, UDP-Gal:beta-GlcNAc beta-1, 4-galactosyltransferase 1, UDP-galactose:beta-N-acetylglucosamine beta-1, 4-galactosyltransferase 1, Lactose synthase A protein, N-acetyllactosamine synthase, Nal synthase, Beta-N-acetylglucosaminylglycopeptide beta-1, 4-galactosyltransferase, Beta-N-acetylglucosaminyl-glycolipid beta-1, 4-galactosyltransferase, 241-, Processed beta-1, 4-galactosyltransferase 1, B4GALT1, GGTB2

**Target/Specificity**

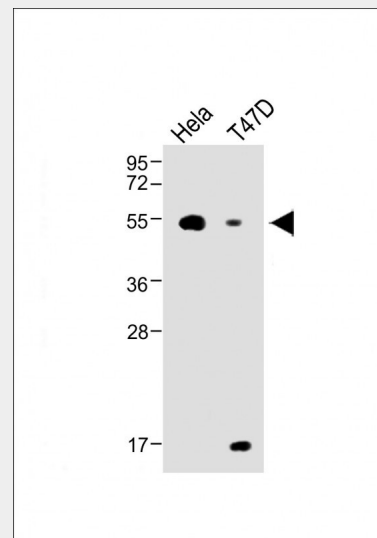
This B4GalT1 antibody is generated from rabbits immunized with a KLH conjugated synthetic peptide between 329-358 amino acids from the C-terminal region of human B4GalT1.

**Dilution**

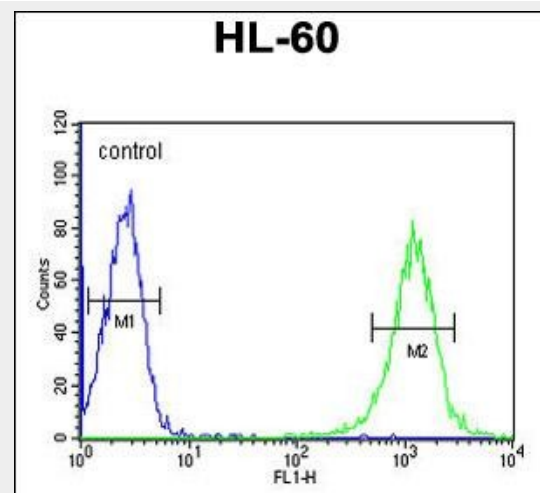
WB~~1:1000  
FC~~1:10~50

**Format**

Purified polyclonal antibody supplied in PBS with 0.09% (W/V) sodium azide. This



All lanes : Anti-B4GalT1 Antibody (C-term) at 1:1000 dilution Lane 1: HeLa, whole cell lysate Lane 2: T47D whole cell lysates/proteins at 20 µg per lane. Secondary Goat Anti-Rabbit IgG, (H+L), Peroxidase conjugated at 1/10000 dilution. Predicted band size : 50 kDa Blocking/Dilution buffer: 5% NFDN/TBST.



B4GalT1 Antibody (C-term) (Cat. #AP8892b) flow cytometric analysis of HL-60 cells (right histogram) compared to a negative control cell (left histogram).FITC-conjugated goat-anti-rabbit secondary antibodies were

antibody is purified through a protein A column, followed by peptide affinity purification.

### Storage

Maintain refrigerated at 2-8°C for up to 2 weeks. For long term storage store at -20°C in small aliquots to prevent freeze-thaw cycles.

### Precautions

B4GalT1 Antibody (C-term) is for research use only and not for use in diagnostic or therapeutic procedures.

### B4GalT1 Antibody (C-term) - Protein Information

**Name** B4GALT1 ([HGNC:924](#))

**Synonyms** GGTB2

### Function

[Beta-1,4-galactosyltransferase 1]: The Golgi complex form catalyzes the production of lactose in the lactating mammary gland and could also be responsible for the synthesis of complex-type N-linked oligosaccharides in many glycoproteins as well as the carbohydrate moieties of glycolipids.

### Cellular Location

[Isoform Long]: Golgi apparatus, Golgi stack membrane; Single-pass type II membrane protein. Cell membrane; Single-pass type II membrane protein Cell surface. Cell projection, filopodium

{ECO:0000250|UniProtKB:P15535}.

Note=Found in trans cisternae of Golgi but is mainly localized at the plasma membrane (PubMed:1714903) B4GALT1 cell surface expression is regulated by UBE2Q1 (By similarity)

{ECO:0000250|UniProtKB:P15535, ECO:0000269|PubMed:1714903}

[Processed beta-1,4-galactosyltransferase 1]: Secreted. Note=Soluble form found in body fluids.

### Tissue Location

Ubiquitously expressed, but at very low levels in fetal and adult brain

used for the analysis.

### B4GalT1 Antibody (C-term) - Background

B4GalT1 is an enzyme that participates both in glycoconjugate and lactose biosynthesis. For the first activity, the enzyme adds galactose to N-acetylglucosamine residues that are either monosaccharides or the nonreducing ends of glycoprotein carbohydrate chains. The second activity is restricted to lactating mammary tissues where the enzyme forms a heterodimer with alpha-lactalbumin to catalyze UDP-galactose + D-glucose UDP + lactose. The two enzymatic forms result from alternate transcription initiation sites and post-translational processing.

### B4GalT1 Antibody (C-term) - References

Mengle-Gaw,L., et.al., Biochem. Biophys. Res. Commun. 176 (3), 1269-1276 (1991)

### B4GalT1 Antibody (C-term) - Protocols

Provided below are standard protocols that you may find useful for product applications.

- [Western Blot](#)
- [Blocking Peptides](#)
- [Dot Blot](#)
- [Immunohistochemistry](#)
- [Immunofluorescence](#)
- [Immunoprecipitation](#)
- [Flow Cytometry](#)
- [Cell Culture](#)