

HPD Antibody (C-term)
Affinity Purified Rabbit Polyclonal Antibody (Pab)
Catalog # AP8591b

Specification

HPD Antibody (C-term) - Product Information

Application	WB, IHC-P,E
Primary Accession	P32754
Other Accession	P49429
Reactivity	Human
Predicted	Mouse
Host	Rabbit
Clonality	Polyclonal
Isotype	Rabbit Ig
Calculated MW	44934
Antigen Region	255-284

HPD Antibody (C-term) - Additional Information

Gene ID 3242

Other Names

4-hydroxyphenylpyruvate dioxygenase,
4-hydroxyphenylpyruvic acid oxidase,
4HPPD, HPD, HPPDase, HPD, PPD

Target/Specificity

This HPD antibody is generated from rabbits immunized with a KLH conjugated synthetic peptide between 255-284 amino acids from the C-terminal region of human HPD.

Dilution

WB~~1:1000
IHC-P~~1:50~100

Format

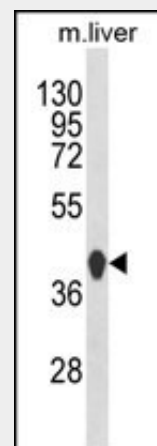
Purified polyclonal antibody supplied in PBS with 0.09% (W/V) sodium azide. This antibody is purified through a protein A column, followed by peptide affinity purification.

Storage

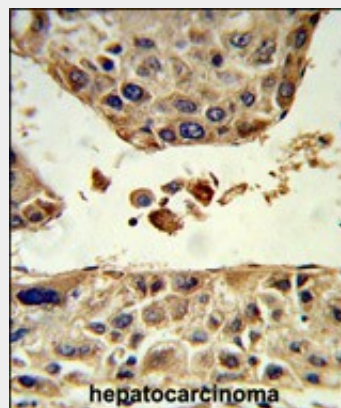
Maintain refrigerated at 2-8°C for up to 2 weeks. For long term storage store at -20°C in small aliquots to prevent freeze-thaw cycles.

Precautions

HPD Antibody (C-term) is for research use



Western blot analysis of HPD Antibody (C-term) (Cat. #AP8591b) in mouse liver tissue lysates (35ug/lane). HPD (arrow) was detected using the purified Pab.



Formalin-fixed and paraffin-embedded human hepatocarcinoma reacted with HPD Antibody (C-term), which was peroxidase-conjugated to the secondary antibody, followed by DAB staining. This data demonstrates the use of this antibody for immunohistochemistry; clinical relevance has not been evaluated.

HPD Antibody (C-term) - Background

HPD is an enzyme in the catabolic pathway of tyrosine. This protein catalyzes the conversion

only and not for use in diagnostic or therapeutic procedures.

of 4-hydroxyphenylpyruvate to homogentisate.

HPD Antibody (C-term) - Protein Information

Name HPD

Synonyms PPD

Function

Key enzyme in the degradation of tyrosine.

HPD Antibody (C-term) - References

Item,C.B., et.al., Mol. Genet. Metab. 91 (4), 379-383 (2007)

Wistow,G., et.al., Mol. Vis. 8, 171-184 (2002)

HPD Antibody (C-term) - Protocols

Provided below are standard protocols that you may find useful for product applications.

- [Western Blot](#)
- [Blocking Peptides](#)
- [Dot Blot](#)
- [Immunohistochemistry](#)
- [Immunofluorescence](#)
- [Immunoprecipitation](#)
- [Flow Cytometry](#)
- [Cell Culture](#)