

YWHAZ Antibody (T232)
Affinity Purified Rabbit Polyclonal Antibody (Pab)
Catalog # AP8152d

Specification

YWHAZ Antibody (T232) - Product Information

Application	WB, IHC-P,E
Primary Accession	P63104
Other Accession	P63102 , P63101 , O5ZKC9 , P63103 , P29361
Reactivity Predicted	Human Bovine, Chicken, Mouse, Rat, Sheep
Host	Rabbit
Clonality	Polyclonal
Isotype	Rabbit Ig
Calculated MW	27745
Antigen Region	211-239

YWHAZ Antibody (T232) - Additional Information

Gene ID 7534

Other Names

14-3-3 protein zeta/delta, Protein kinase C inhibitor protein 1, KCIP-1, YWHAZ

Target/Specificity

This YWHAZ antibody is generated from rabbits immunized with a KLH conjugated synthetic peptide between 211-239 amino acids from human YWHAZ.

Dilution

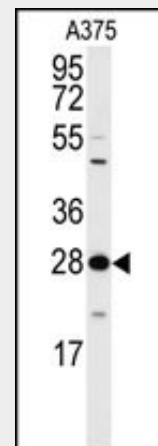
WB~~1:1000
IHC-P~~1:10~50

Format

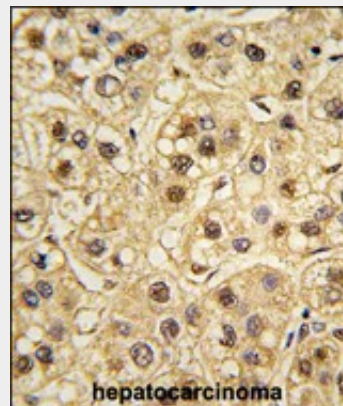
Purified polyclonal antibody supplied in PBS with 0.09% (W/V) sodium azide. This antibody is purified through a protein A column, followed by peptide affinity purification.

Storage

Maintain refrigerated at 2-8°C for up to 2 weeks. For long term storage store at -20°C in small aliquots to prevent freeze-thaw cycles.



Western blot analysis of anti-14-3-3 protein zeta/delta Antibody (T232)(Cat.#AP8152d) in A375 cell line lysates (35ug/lane). 14-3-3 (arrow) was detected using the purified Pab.



Formalin-fixed and paraffin-embedded human testis tissue reacted with YWHAZ Antibody (Cat.#AP8152d), which was peroxidase-conjugated to the secondary antibody, followed by DAB staining. This data demonstrates the use of this antibody for immunohistochemistry; clinical relevance has not been evaluated.

YWHAZ Antibody (T232) - Background

14-3-3 protein zeta/delta belongs to the 14-3-3 family of proteins which mediate signal

Precautions

YWHAZ Antibody (T232) is for research use only and not for use in diagnostic or therapeutic procedures.

YWHAZ Antibody (T232) - Protein Information

Name YWHAZ

Function

Adapter protein implicated in the regulation of a large spectrum of both general and specialized signaling pathways. Binds to a large number of partners, usually by recognition of a phosphoserine or phosphothreonine motif. Binding generally results in the modulation of the activity of the binding partner. Induces ARHGEF7 activity on RAC1 as well as lamellipodia and membrane ruffle formation (PubMed:16959763). In neurons, regulates spine maturation through the modulation of ARHGEF7 activity (By similarity).

Cellular Location

Cytoplasm. Melanosome. Note=Located to stage I to stage IV melanosomes

YWHAZ Antibody (T232) - Protocols

Provided below are standard protocols that you may find useful for product applications.

- [Western Blot](#)
- [Blocking Peptides](#)
- [Dot Blot](#)
- [Immunohistochemistry](#)
- [Immunofluorescence](#)
- [Immunoprecipitation](#)
- [Flow Cytometry](#)
- [Cell Culture](#)

transduction by binding to phosphoserine-containing proteins. This protein interacts with IRS1 protein, suggesting a role in regulating insulin sensitivity. This highly conserved protein family is found in both plants and mammals, and this protein is 99% identical to the mouse, rat and sheep orthologs.

YWHAZ Antibody (T232) - References

Li,F.Q., J. Cell Biol. 181 (7), 1141-1154 (2008)
Mateo,I., Eur. J. Neurol. 15 (3), 219-222 (2008)
Li,Z., Proc. Natl. Acad. Sci. U.S.A. 105 (1), 162-167 (2008)
Powell,D.W., Mol. Cell. Biol. 23 (15), 5376-5387 (2003)
Powell,D.W., J. Biol. Chem. 277 (24), 21639-21642 (2002)