

**ARTS1 Antibody (Center)**  
**Purified Rabbit Polyclonal Antibody (Pab)**  
Catalog # AP7859c

## Specification

### ARTS1 Antibody (Center) - Product Information

Application	WB,E
Primary Accession	<a href="#">O9NZ08</a>
Reactivity	Human
Host	Rabbit
Clonality	Polyclonal
Isotype	Rabbit Ig
Calculated MW	107235
Antigen Region	451-480

### ARTS1 Antibody (Center) - Additional Information

Gene ID 51752

#### Other Names

Endoplasmic reticulum aminopeptidase 1, 3411-, ARTS-1, Adipocyte-derived leucine aminopeptidase, A-LAP, Aminopeptidase PILS, Puromycin-insensitive leucyl-specific aminopeptidase, PILS-AP, Type 1 tumor necrosis factor receptor shedding aminopeptidase regulator, ERAP1, APPILS, ARTS1, KIAA0525

#### Target/Specificity

This ARTS1 antibody is generated from rabbits immunized with a KLH conjugated synthetic peptide between 451-480 amino acids from the Central region of human ARTS1.

#### Dilution

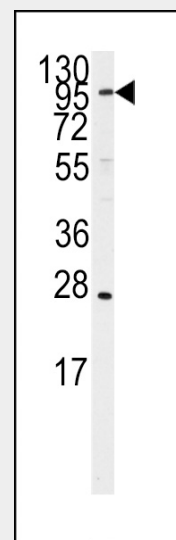
WB~~1:1000

#### Format

Purified polyclonal antibody supplied in PBS with 0.09% (W/V) sodium azide. This antibody is prepared by Saturated Ammonium Sulfate (SAS) precipitation followed by dialysis against PBS.

#### Storage

Maintain refrigerated at 2-8°C for up to 2 weeks. For long term storage store at -20°C in small aliquots to prevent freeze-thaw cycles.



Western blot analysis of anti-ARTS1 Antibody (Center) (Cat.#AP7859c) in Ramos cell line lysates (35ug/lane). ARTS1 (arrow) was detected using the purified Pab.

### ARTS1 Antibody (Center) - Background

Aminopeptidases play a role in the metabolism of several peptides that may be involved in blood pressure and the pathogenesis of essential hypertension. Adipocyte-derived leucine aminopeptidase (ALAP) is a member of the M1 family of zinc metallopeptidases.

### ARTS1 Antibody (Center) - References

- Goto,Y., Biochem. J. 416 (1), 109-116 (2008)
- Fruci,D., J. Cell. Physiol. 216 (3), 742-749 (2008)
- Adamik,B., Biochem. Biophys. Res. Commun. 371 (3), 505-509 (2008)

**Precautions**

ARTS1 Antibody (Center) is for research use only and not for use in diagnostic or therapeutic procedures.

**ARTS1 Antibody (Center) - Protein Information**

**Name** ERAP1

**Synonyms** APPILS, ARTS1, KIAA0525

**Function**

Aminopeptidase that plays a central role in peptide trimming, a step required for the generation of most HLA class I-binding peptides. Peptide trimming is essential to customize longer precursor peptides to fit them to the correct length required for presentation on MHC class I molecules. Strongly prefers substrates 9-16 residues long. Rapidly degrades 13-mer to a 9-mer and then stops. Preferentially hydrolyzes the residue Leu and peptides with a hydrophobic C-terminus, while it has weak activity toward peptides with charged C-terminus. May play a role in the inactivation of peptide hormones. May be involved in the regulation of blood pressure through the inactivation of angiotensin II and/or the generation of bradykinin in the kidney.

**Cellular Location**

Endoplasmic reticulum membrane;  
Single-pass type II membrane protein

**Tissue Location**

Ubiquitous.

**ARTS1 Antibody (Center) - Protocols**

Provided below are standard protocols that you may find useful for product applications.

- [Western Blot](#)
- [Blocking Peptides](#)
- [Dot Blot](#)
- [Immunohistochemistry](#)
- [Immunofluorescence](#)
- [Immunoprecipitation](#)
- [Flow Cytometry](#)
- [Cell Culture](#)